

## Microsoft Braindumps 70-411 Exam Questions & Answers

Number: 70-411  
Passing Score: 800  
Time Limit: 120 min  
File Version: 32.5



<http://www.gratisexam.com/>



**Microsoft 70-411 Exam Questions & Answers**

**Exam Name: Administering Windows Server 2012**

**For Full Set of Questions please visit: <http://www.braindumps.com/70-411.htm>**

## Braindumps

### QUESTION 1

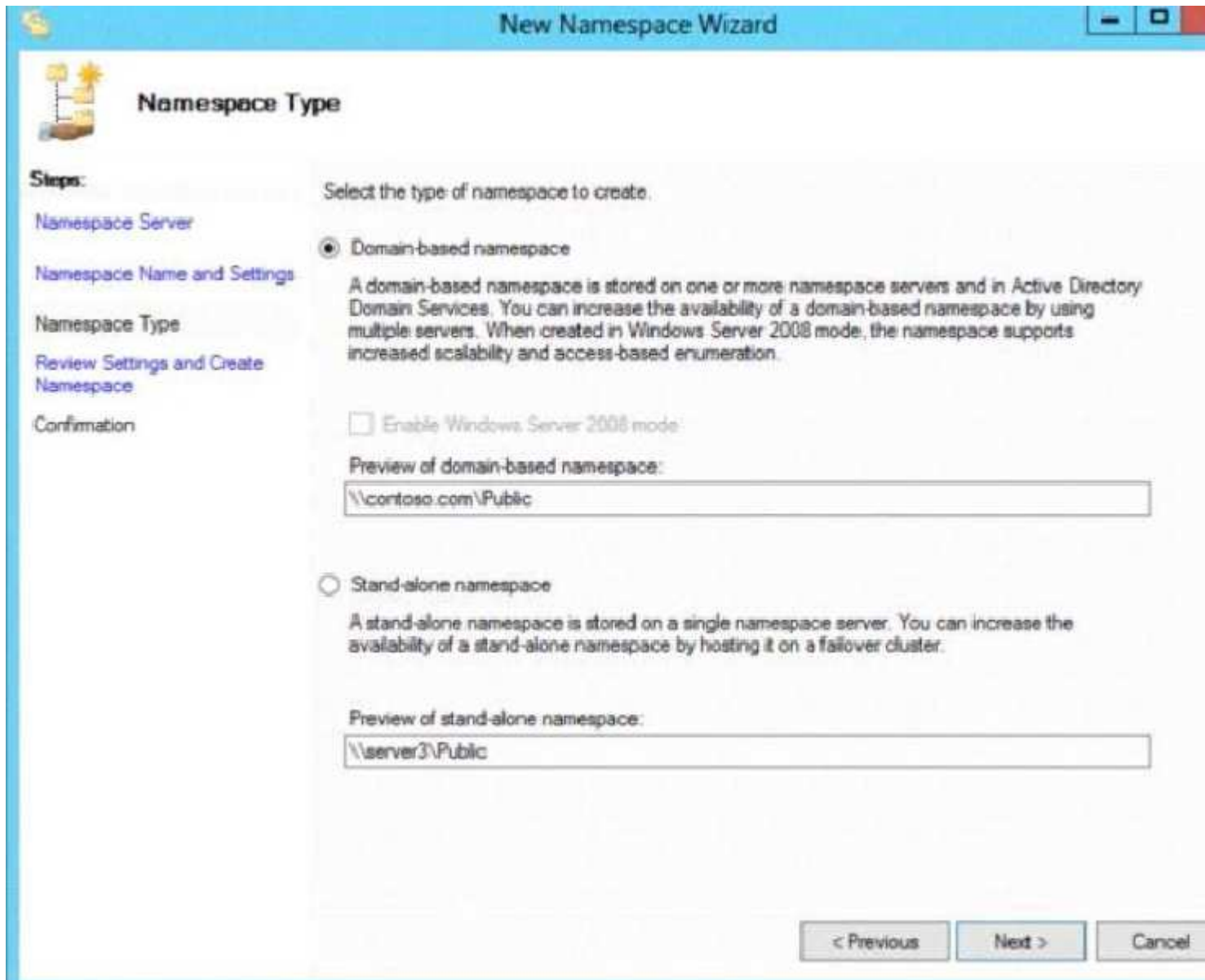
Your network contains an Active Directory domain named contoso.com. The functional level of the forest is Windows Server 2008 R2. Computer accounts for the marketing department are in an organizational unit (OU) named Departments\Marketing\Computers. User accounts for the marketing department are in an OU named Departments\Marketing\Users. All of the marketing user accounts are members of a global security group named MarketingUsers. All of the marketing computer accounts are members of a global security group named MarketingComputers. In the domain, you have Group Policy objects (GPOs) as shown in the exhibit.

You create two Password Settings objects named PSO1 and PSO2. PSO1 is applied to MarketingUsers. PSO2 is applied to MarketingComputers. The minimum password length is defined for each policy as shown in the following table.

Location	Minimum password length
Default Domain Policy	7
GPO1	5
GPO2	6
PSO1	10
PSO2	12

You need to identify the minimum password length required for each marketing user. What should you identify?

**Exhibit:**



- A. 5
- B. 6
- C. 7
- D. 10
- E. 12

**Correct Answer:** D

**Section:** (none)

**Explanation**

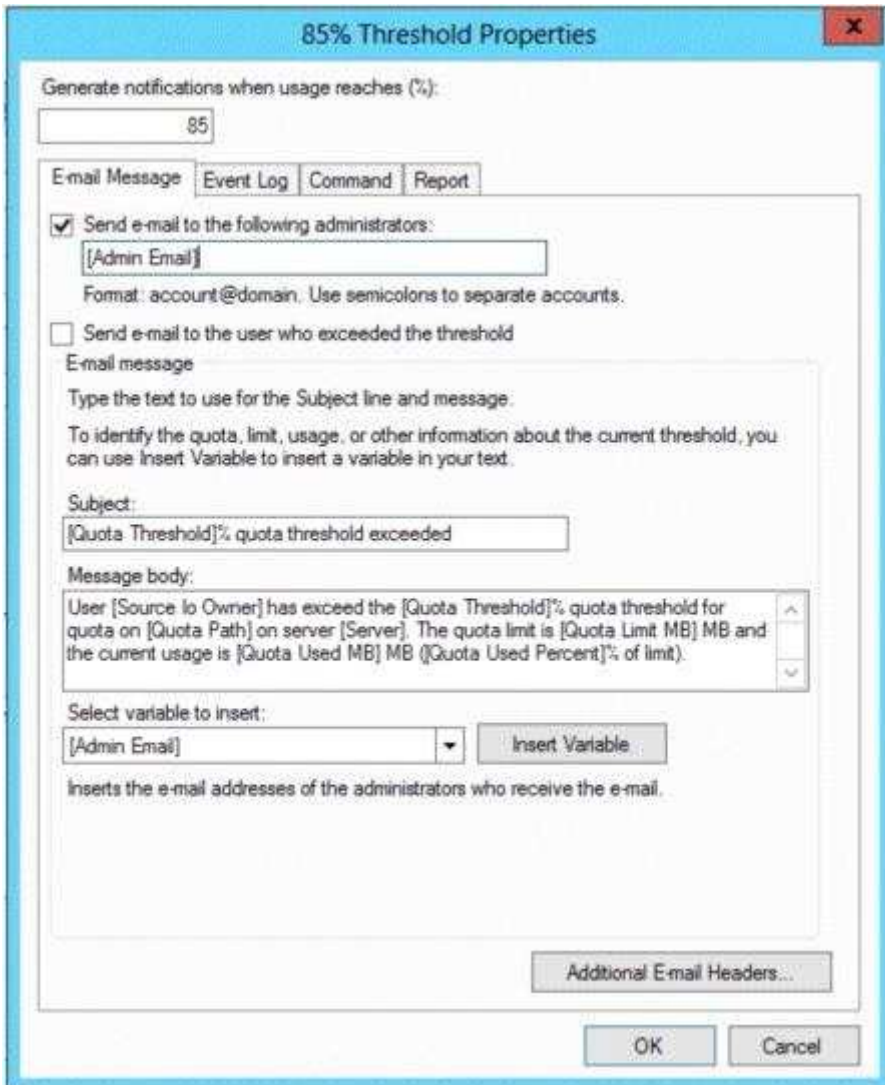
**Explanation/Reference:**

#### QUESTION 2

Your network contains an Active Directory domain named contoso.com. The domain contains a server named Admin1 that runs Windows Server 2012. Admin1 has the File Server Resource Manager role service installed. You configure a quota threshold as shown in the exhibit.

You need to ensure that a user named User1 receives an email notification when the threshold is exceeded. What should you do?

Exhibit:



- A. Configure the File Server Resource Manager Options.
- B. Modify the members of the Performance Log Users group.
- C. Create a performance counter alert.
- D. Create a classification rule.

**Correct Answer:** A

**Section:** (none)

**Explanation**

**Explanation/Reference:**

**QUESTION 3**

Your network contains an Active Directory domain named contoso.com. All servers run Windows Server 2012. The domain contains an organizational unit (OU) named FileServers\_OU. FileServers\_OU contains the computer accounts for all of the file servers in the domain. You need to audit the users who successfully access shares on the file servers. Which audit category should you configure?

**Hot Area:**

Categories	Configuration
Account Logon	Not configured
Account Management	Not configured
Detailed Tracking	Not configured
DS Access	Not configured
Logon/Logoff	Not configured
Object Access	Not configured
Policy Change	Not configured
Privilege Use	Not configured
System	Not configured
Global Object Access Auditing	Not configured

**Correct Answer:**

Categories	Configuration
Account Logon	Not configured
Account Management	Not configured
Detailed Tracking	Not configured
DS Access	Not configured
Logon/Logoff	Not configured
Object Access	Not configured
Policy Change	Not configured
Privilege Use	Not configured
System	Not configured
Global Object Access Auditing	Not configured

**Section: (none)**

**Explanation**

**Explanation/Reference:**

**QUESTION 4**

You have a server named Admin1 that runs Windows Server 2012. Admin1 has the File Server Resource Manager role service installed. Admin1 has a folder named Folder1 that is used by the human resources department. You need to ensure that an email notification is sent immediately to the human resources manager when a user copies an audio file or a video file to Folder1. What should you configure on Admin1?

- A. A file screen
- B. A file screen exception
- C. A file group
- D. A storage report task

**Correct Answer:** C

**Section:** (none)

**Explanation**

**Explanation/Reference:**

### QUESTION 5

Your network contains an Active Directory domain named contoso.com. The domain contains five servers. The servers are configured as shown in the following table.

Server name	Configuration
Server1	Domain controller
Server2	DHCP server
Server3	DNS server
Server4	Network Policy Server (NPS)
Server5	Windows Deployment Services (WDS)



<http://www.gratisexam.com/>

All desktop computers in contoso.com run Windows 8 and are configured to use BitLocker Drive Encryption (BitLocker) on all local disk drives. You need to deploy the Network Unlock feature. The solution must minimize the number of features and server roles installed on the network. To which server should you deploy the feature?

- A. Server3
- B. Server5
- C. Server1
- D. Server2
- E. Server4

**Correct Answer:** B

**Section:** (none)

**Explanation**

**Explanation/Reference:**

### QUESTION 6

Your network contains an Active Directory domain named contoso.com. The domain contains two servers named Admin1 and Server2. Both servers run Windows Server 2012. Both servers have the File and Storage Services server role, the DFS Namespaces role service, and the DFS Replication role service installed. Admin1 and Server2 are part of a Distributed File System (DFS) Replication group named Group1. Admin1 and Server2 are separated by a low-speed WAN connection. You need to limit the amount of bandwidth that DFS can use to replicate between Admin1 and Server2. What should you modify?

- A. The cache duration of the namespace
- B. The staging quota of the replicated folder
- C. The referral ordering of the namespace
- D. The schedule of the replication group

**Correct Answer: D**

**Section: (none)**

**Explanation**

**Explanation/Reference:**

### QUESTION 7

Your network contains an Active Directory domain named contoso.com. All servers run Windows Server 2012. All sales users have laptop computers that run Windows 8. The sales computers are joined to the domain. All user accounts for the sales department are in an organizational unit (OU) named Sales\_OU. A Group Policy object (GPO) named GPO1 is linked to Sales\_OU. You need to configure a dial-up connection for all of the sales users. What should you configure from User Configuration in GPO1?

- A. Policies/Administrative Templates/Network/Windows Connect Now
- B. Policies/Administrative Templates/Windows Components/Windows Mobility Center
- C. Preferences/Control Panel Settings/Network Options
- D. Policies/Administrative Templates/Network/Network Connections

**Correct Answer: A**

**Section: (none)**

**Explanation**

**Explanation/Reference:**

### QUESTION 8

Your network contains an Active Directory domain named contoso.com. The domain contains a domain controller named DC1 that runs Windows Server 2012.

You have a Group Policy object (GPO) named GPO1 that contains several custom Administrative templates.

You need to filter the GPO to display only settings that will be removed from the registry when the GPO falls out of scope. The solution must only display settings that are either enabled or disabled and that have a comment. How should you configure the filter?

To answer, select the appropriate options below. Select three.

## Filter Options



Select options below to enable and change or disable types of global filters that will be applied to the Administrative Templates nodes.

Select the type of policy settings to display.

Managed:

Any

Configured:

Any

Commented:

Any

Enable Keyword Filters

Enable Keyword Filters

Filter for word(s):

Any

Within:

Policy Setting Title

Help Text

Comment

Enable Requirements Filters

Select the desired platform and application filter(s):

Include settings that match any of the selected platforms.

- BITS 1.5
- BITS 2.0
- BITS 3.5
- BITS 4.0
- Internet Explorer 10
- Internet Explorer 3
- Internet Explorer 4
- Internet Explorer 5

Select All

Clear All

OK

Cancel



**Filter Options**

Select options below to enable and change or disable types of global filters that will be applied to the Administrative Templates nodes.

Select the type of policy settings to display.

Managed:  Configured:  Commented:

Enable Keyword Filters

Filter for word(s):

Within:  Policy Setting Title  Help Text  Comment

Enable Requirements Filters

Select the desired platform and application filter(s):

Include settings that match any of the selected platform(s).

BITS 1.5  
 BITS 2.0  
 BITS 3.5  
 BITS 4.0  
 Internet Explorer 10  
 Internet Explorer 3  
 Internet Explorer 4  
 Internet Explorer 5

- A. Set Managed to: Yes
- B. Set Managed to: No
- C. Set Managed to: Any
- D. Set Configured to: Yes
- E. Set Configured to: No
- F. Set Configured to: Any
- G. Set Commented to: Yes
- H. Set Commented to: No

I. Set Commented to: Any

**Correct Answer:** AFG

**Section:** (none)

**Explanation**

**Explanation/Reference:**

Explanation:

A: Set Managed to: Yes

There are two kinds of Administrative Template policy settings: Managed and Unmanaged. The Group Policy Client service governs Managed policy settings and removes a policy setting when it is no longer within scope of the user or computer.

F: Set Configured to: Any

We want to display both settings that are enable and disabled.

G: Set Commented to: Yes

Only settings that are commented should be displayed.

Note: Filter with Property Filters

The Local Group Policy Editor allows you to change the criteria for displaying Administrative Template policy settings. By default, the editor displays all policy settings, including unmanaged policy settings. However, you can use property filters to change how the Local Group Policy Editor displays Administrative Template policy settings.

There are three inclusive property filters that you can use to filter Administrative Templates. These property filters include:

\* Managed

\* Configured

\* Commented

#### **QUESTION 9**

Your network contains an Active Directory domain named contoso.com. The domain contains a domain controller named dcl.contoso.com. You discover that the Default Domain Policy Group Policy objects (GPO5) and the Default Domain Controllers Policy GPOs were deleted. You need to recover the Default Domain Policy and the Default Domain Controllers Policy GPOs. What should you run?

A. dcgpofix.exe /target:domain

B. gpfixup.exe /dc:dc1.contoso.com

C. dcgpofix.exe /target:both

D. gptfixup.exe /oldnb:contoso /newnb:dc1

**Correct Answer:** C

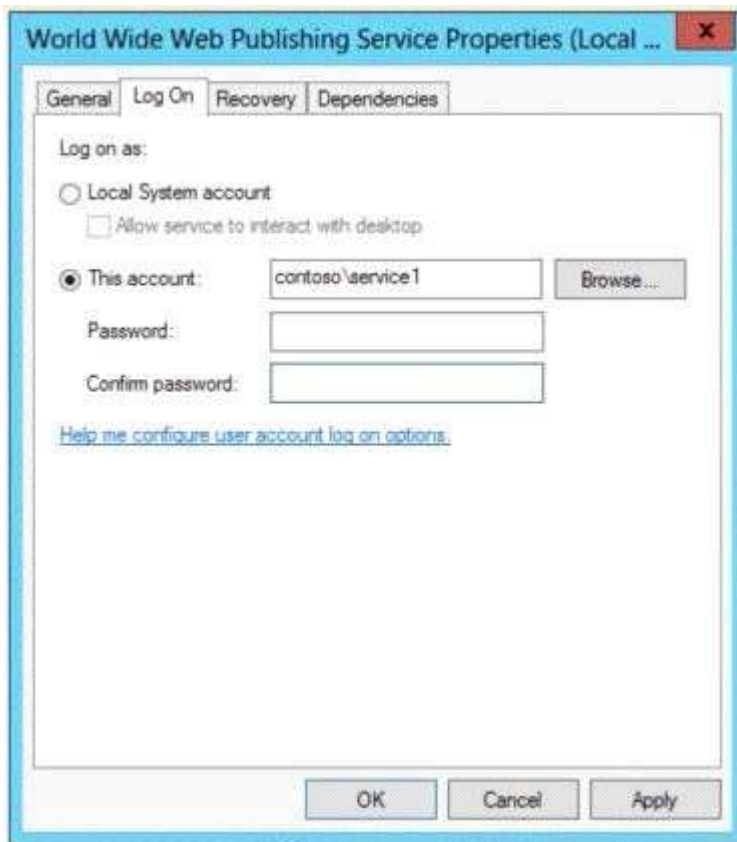
**Section:** (none)

**Explanation**

**Explanation/Reference:**

#### **QUESTION 10**

Your network contains an Active Directory domain named contoso.com. The domain contains a member server named Admin1. Admin1 has the Web Server (US) server role installed. On Admin1, you install a managed service account named Servicel. You attempt to configure the World Wide Web Publishing Service as shown in the exhibit.



You receive the following error message: "The account name is invalid or does not exist, or the password is invalid for the account name specified." You need to ensure that the World Wide Web Publishing Service can log on by using the managed service account. What should you do?

- A. Specify contoso\service1\$ as the account name.
- B. Specify service1@contoso.com as the account name.
- C. Reset the password for the account.
- D. Enter and confirm the password for the account.

**Correct Answer:** A

**Section:** (none)

**Explanation**

**Explanation/Reference:**

#### **QUESTION 11**

Your network contains an Active Directory domain named contoso.com. Domain controllers run either Windows Server 2008, Windows Server 2008 R2, or Windows Server 2012. You have a Password Settings object (PSO5) named PSO1. You need to view the settings of PSO1. Which tool should you use?

- A. Group Policy Management
- B. Server Manager
- C. Get-ADAccountResultantPasswordReplicationPolicy
- D. Active Directory Administrative Center

**Correct Answer:** A

**Section: (none)**

**Explanation**

**Explanation/Reference:**

**QUESTION 12**

Your network contains an Active Directory domain named contoso.com. The domain contains a domain controller named DC1. On Dc1, you add a new volume and you stop the Active Directory Domain Services (AD DS) service. You run ntdsutil.exe and you set NTDS as the active instance. You need to move the Active Directory database to the new volume. Which Ntdsutil context should you use?

- A. Configurable Settings
- B. Partition management
- C. IFM
- D. Files

**Correct Answer: D**

**Section: (none)**

**Explanation**

**Explanation/Reference:**

**QUESTION 13**

Your network contains an Active Directory domain named contoso.com. All domain controllers run Windows Server 2012. You pre-create a read-only domain controller (P.QDC) account named RODC1. You export the settings of RODC1 to a file named File1.txt. You need to promote RODC1 by using File1.txt. Which tool should you use?

- A. The Dcpromo command
- B. The Install-WindowsFeature cmdlet
- C. The Install-ADDSDomainController cmdlet
- D. The Add-WindowsFeature cmdlet
- E. The Dism command

**Correct Answer: A**

**Section: (none)**

**Explanation**

**Explanation/Reference:**

**QUESTION 14**

Your network contains an Active Directory domain named contoso.com. Domain controllers run either Windows Server 2003, Windows Server 2008 R2, or Windows Server 2012. A support technician accidentally deletes a user account named User1. You need to use tombstone reanimation to restore the User1 account. Which tool should you use?

- A. Ntdsutil
- B. Ldp
- C. Esentutil
- D. Active Directory Administrative Center

**Correct Answer: B**

**Section: (none)**

**Explanation**

**Explanation/Reference:**

**QUESTION 15**

Your network contains an Active Directory domain named contoso.com. The functional level of the forest is Windows Server 2008 R2.

Computer accounts for the marketing department are in an organizational unit (OU) named Departments\Marketing\Computers. User accounts for the marketing department are in an OU named Departments\Marketing\Users.

All of the marketing user accounts are members of a global security group named MarketingUsers.

All of the marketing computer accounts are members of a global security group named MarketingComputers.

In the domain, you have Group Policy objects (GPO) as shown in the exhibit. (Click the Exhibit button.)

You create two Password Settings objects named PSO1 and PSO2. PSO1 is applied to MarketingUsers. PSO2 is applied to MarketingComputers.

The minimum password length is defined for each policy as shown in the following table.

Location	Minimum password length
Default Domain Policy	7
GPO1	5
GPO2	6
PSO1	10
PSO2	12

You need to identify the minimum password length required for each marketing user. What should you identify?

- A. 5
- B. 6
- C. 7
- D. 10
- E. 12

**Correct Answer: D**

**Section: (none)**

**Explanation**

**Explanation/Reference:**

**QUESTION 16**

Your network contains an Active Directory domain named contoso.com. The domain contains a domain controller named DC4 that runs Windows Server 2012. You create a DCCloneConfig.xml file.

You need to clone DC4. Where should you place DCCloneConfig.xml on DC4?

- A. %Systemroot%\SYSVOL

- B. %Programdata%\Microsoft
- C. %Systemroot%\NTDS
- D. %Systemdrive%

**Correct Answer:** C

**Section:** (none)

**Explanation**

**Explanation/Reference:**

#### **QUESTION 17**

You have a server named Admin1 that runs Windows Server 2012. On Admin1, you configure a custom Data Collector Set (DCS) named DCS1. You need to ensure that all performance log data that is older than 30 days is deleted automatically. What should you configure?

- A. a File Server Resource Manager (FSRM) quota on the %Systemdrive%\PerfLogs folder
- B. a schedule for DCS1
- C. the Data Manager settings of DCS1
- D. a File Server Resource Manager (FSRM) file screen on the %Systemdrive%\PerfLogs folder

**Correct Answer:** C

**Section:** (none)

**Explanation**

**Explanation/Reference:**

#### **QUESTION 18**

You have a server named Admin1 that runs Windows Server 2012. You create a custom Data Collector Set (DCS) named DCS1. You need to configure DCS1 to meet the following requirements:

- Automatically run a program when the amount of total free disk space on Admin1 drops below 10 percent of capacity.
- Log the current values of several registry settings.

Which two should you configure in DCS1? (Each correct answer presents part of the solution. Choose two.)

- A. System configuration information
- B. A performance counter
- C. Event trace data
- D. A Performance Counter Alert

**Correct Answer:** CD

**Section:** (none)

**Explanation**

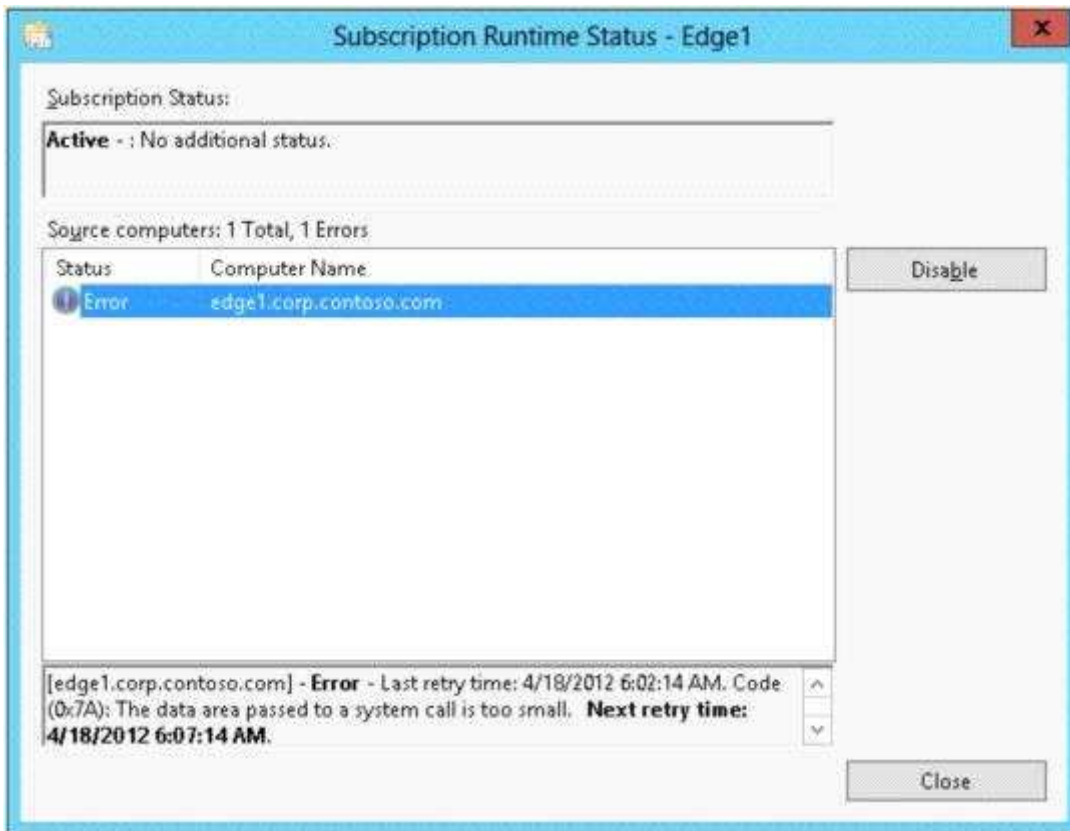
**Explanation/Reference:**

#### **QUESTION 19**

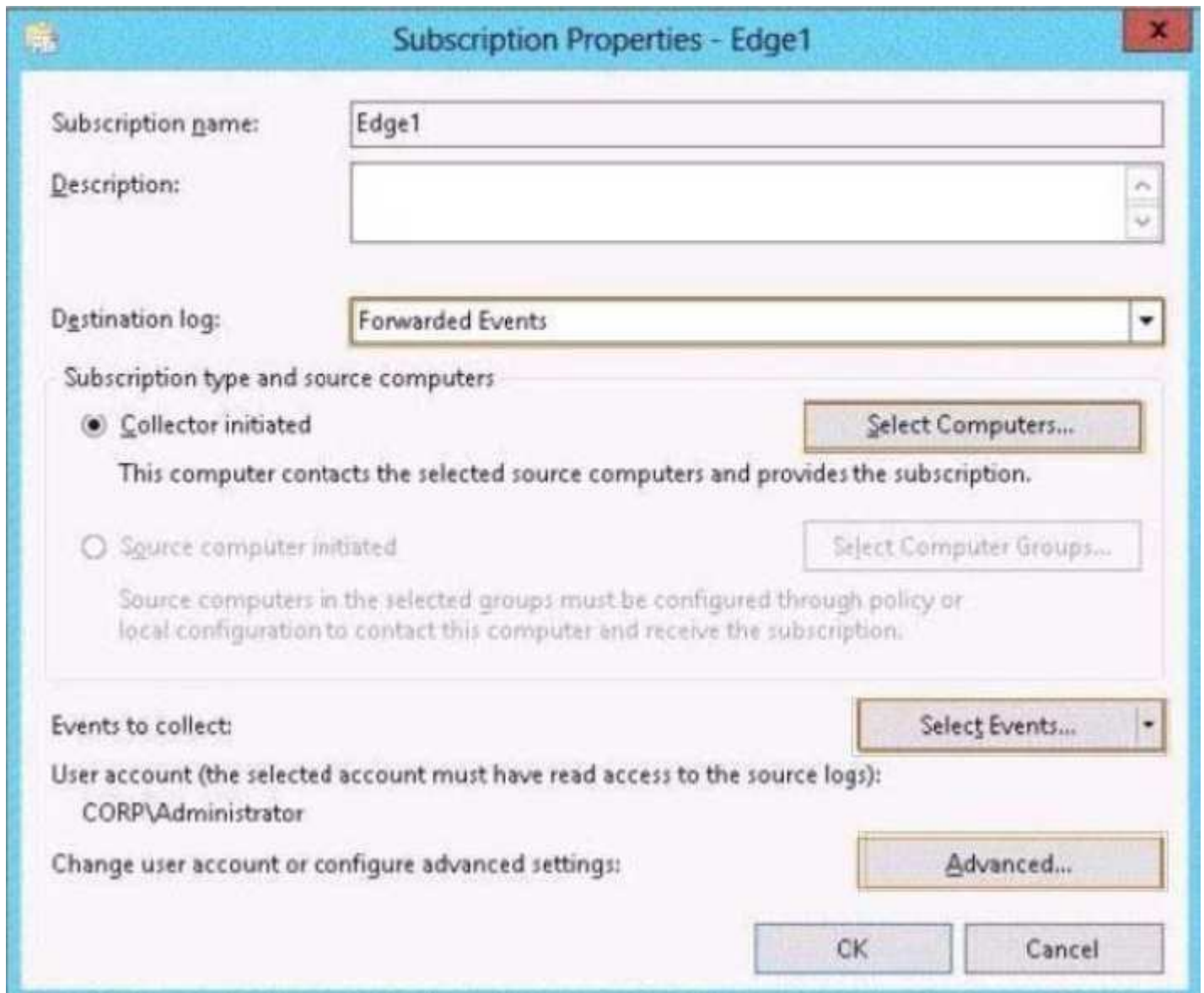
our network contains an Active Directory domain named corp.contoso.com. The domain contains two member servers named Admin1 and Edge1. Both servers run Windows Server 2012. Your company wants to implement a central location where the system events from all of the servers in the domain will be collected. From Admin1, a network technician creates a collector-initiated subscription for Edge 1. You discover that Admin1 does not contain any events from Edge 1. You view the runtime status of the subscription as shown in the exhibit. (Click the Exhibit button.)

You need to ensure that the system events from Edge 1 are collected on Admin1.

**Exhibit:**

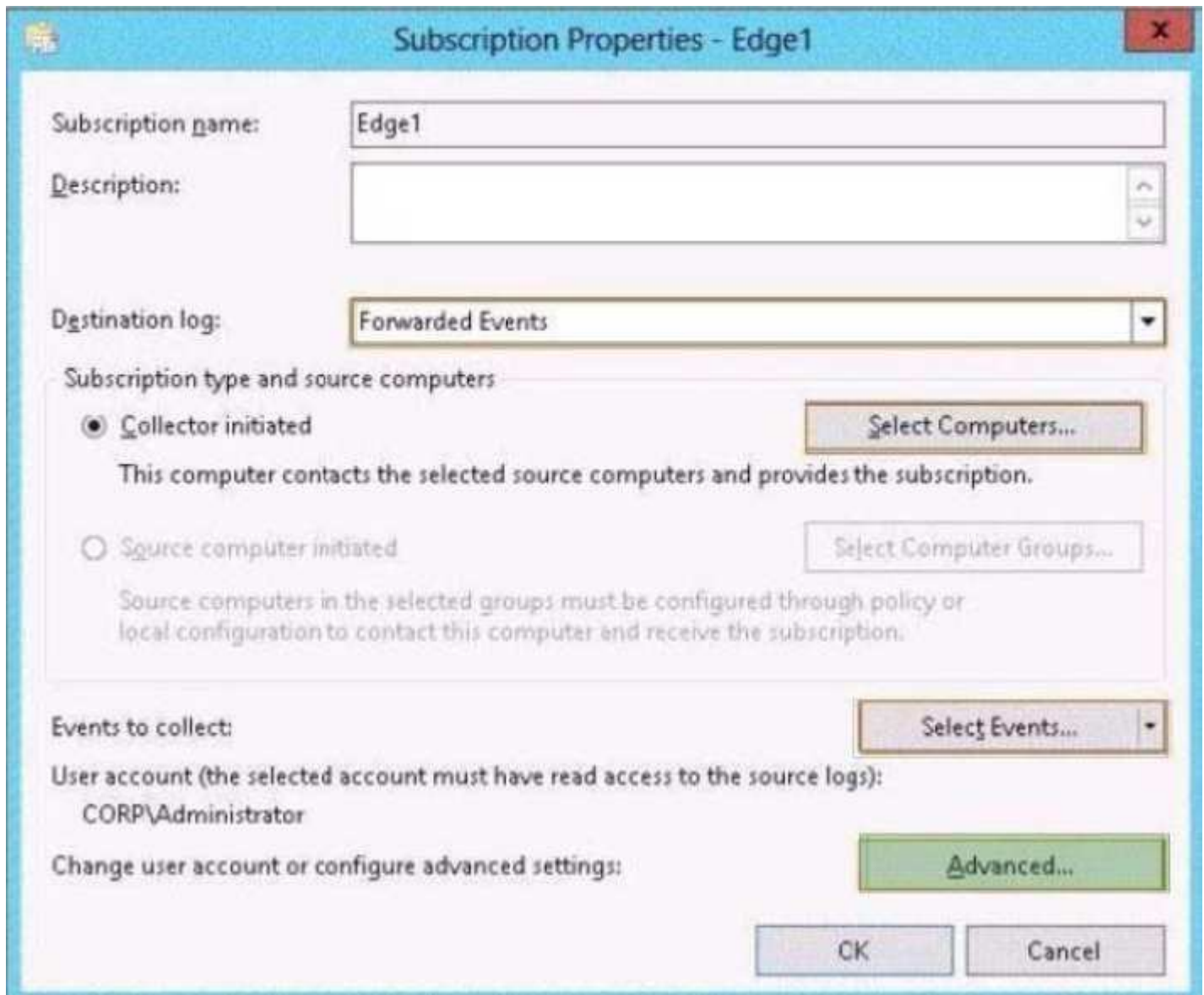


**Hot Area:**



Correct Answer:





**Section: (none)**

**Explanation**

**Explanation/Reference:**

**QUESTION 20**

Your network contains an Active Directory domain named contoso.com. All client computers connect to the Internet by using a server that has Microsoft Forefront Threat Management Gateway (TMG) installed. You deploy a server named Admin1 that runs Windows Server 2012. You install the Windows Server Update Services server role on Admin1. From the Windows Server Update Services Configuration Wizard, you click Start Connecting and you receive an HTTP error message. You need to configure Admin1 to download Windows updates from the Internet. What should you do?

- A. From the Update Services console, modify the Synchronization Schedule options.
- B. From Windows Internet Explorer, modify the Connections settings.
- C. From Windows Internet Explorer, modify the Security settings.
- D. From the Update Services console, modify the Update Source and Proxy Server options.

**Correct Answer:** D

**Section:** (none)

**Explanation**

**Explanation/Reference:**

#### **QUESTION 21**

Your network contains a single Active Directory domain named contoso.com. The domain contains a member server named Admin1 that runs Windows Server 2012. Admin1 has the Windows Server Updates Services server role installed and is configured to download updates from the Microsoft Update servers. You need to ensure that Admin1 downloads express installation files from the Microsoft Update servers. What should you do from the Update Services console?

- A. From the Automatic Approvals options, configure the Update Rules settings
- B. From the Products and Classifications options, configure the Classifications settings.
- C. From the Products and Classifications options, configure the Products settings.
- D. From the Update Files and Languages options, configure the Update Files settings.

**Correct Answer:** B

**Section:** (none)

**Explanation**

**Explanation/Reference:**

#### **QUESTION 22**

You have a VHD that contains an image of Windows Server 2012. You plan to apply updates to the image. You need to ensure that only updates that can install without requiring a restart are installed. Which DISM option should you use?

- A. /PreventPending
- B. /Apply-Unattend
- C. /Cleanup-Image
- D. /Add-ProvisionedAppxPackage

**Correct Answer:** D

**Section:** (none)

**Explanation**

**Explanation/Reference:**

#### **QUESTION 23**

Your network contains an Active Directory domain named adatum.com. The domain contains a server named WDS1 that runs Windows Server 2012. You install the Windows Deployment Services server role on WDS1. You have a virtual machine named VM1 that runs Windows Server 2012. VM1 has several line-of-business applications installed. You need to create an image of VM1 by using Windows Deployment Services. Which type of image should you add to Admin1 first?

- A. Capture
- B. Install
- C. Discovery
- D. Boot

**Correct Answer:** D

**Section:** (none)

**Explanation**

**Explanation/Reference:**

**QUESTION 24**

Your network contains an Active Directory domain named contoso.com. The domain contains a server named Admin1 that runs Windows Server 2012. You enable and configure Routing and Remote Access (RRAS) on Admin1. You create a user account named User1. You need to ensure that User1 can establish VPN connections to Admin1. What should you do?

- A. Create a network policy
- B. Modify the members of the Remote Management Users group.
- C. Create a connection request policy.
- D. Add a RADIUS client.

**Correct Answer:** A

**Section:** (none)

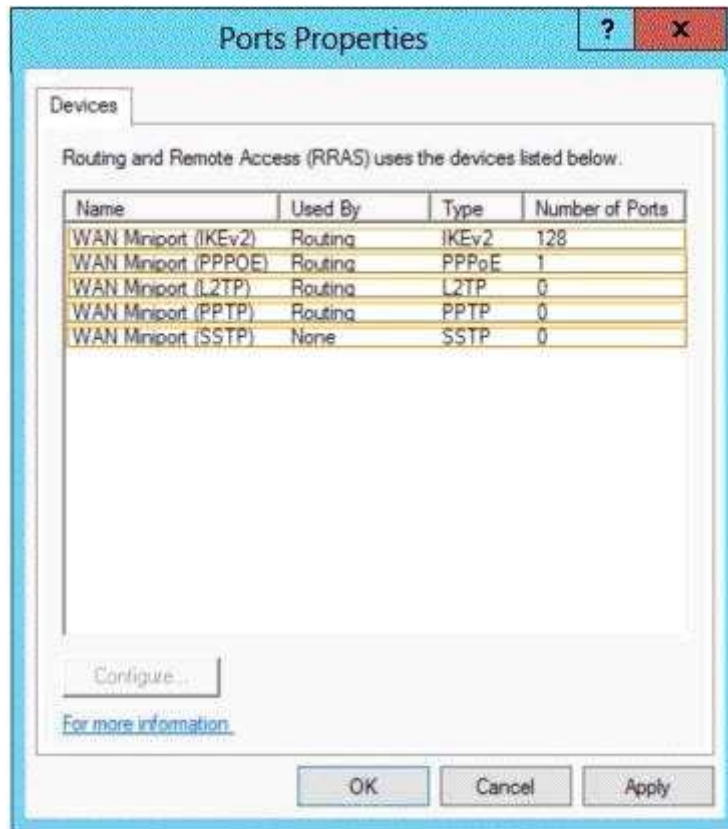
**Explanation**

**Explanation/Reference:**

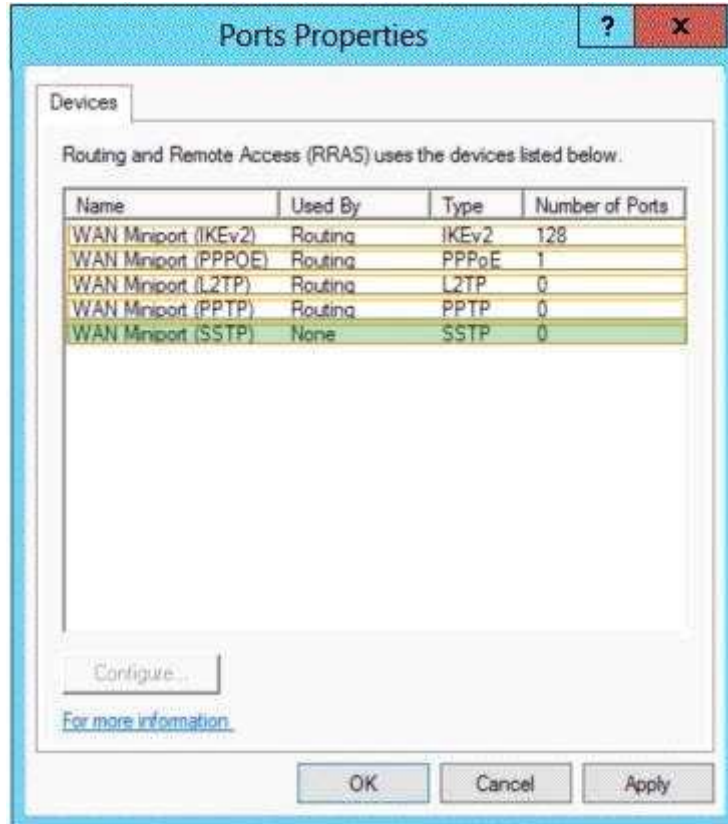
**QUESTION 25**

You have a server named Admin1 that runs Windows Server 2012. Admin1 has the Remote Access server role installed. You need to configure the ports on Admin1 to ensure that client computers can establish VPN connections to Admin1 by using TCP port 443. What should you modify? To answer, select the appropriate object in the answer area.

**Hot Area:**



Correct Answer:



**Section: (none)**

**Explanation**

**Explanation/Reference:**

**QUESTION 26**

You have a DNS server named Admin1. Admin1 has a primary zone named contoso.com. Zone Aging/Scavenging is configured for the contoso.com zone. One month ago, an Admin1strator removed a server named Server2 from the network. You discover that a static resource record for Server2 is present in contoso.com. Resource records for decommissioned client computers are removed automatically from contoso.com. You need to ensure that the static resource records for all of the servers are removed automatically from contoso.com. What should you modify?

- A. The Security settings of the static resource records
- B. The Expires after value of contoso.com
- C. The Record time stamp value of the static resource records
- D. The time-to-live (TTL) value of the static resource records

**Correct Answer: C**

**Section: (none)**

**Explanation**

**Explanation/Reference:**

**QUESTION 27**

Your network contains two Active Directory domains named contoso.com and adatum.com. The network contains a server named Admin1 that runs Windows Server 2012. Admin1 has the DNS Server server role installed. Server] has a copy of the contoso.com DNS zone. You need to configure Admin1 to resolve names in the adatum.com domain. The solution must meet the following requirements:

- Prevent the need to change the configuration of the current name servers that host zones for adatum.com.
- Minimize Admin1strative effort.

Which type of zone should you create?

- A. Primary
- B. Secondary
- C. Reverse lookup
- D. Stub

**Correct Answer: D**

**Section: (none)**

**Explanation**

**Explanation/Reference:**

**QUESTION 28**

Your network contains two servers named Admin1 and Server2. Both servers run Windows Server 2012 and have the DNS Server server role installed. On Admin1, you create a standard primary zone named contoso.com. You need to ensure that Server2 can host a secondary zone for contoso.com. What should you do from Admin1?

- A. Add Server2 as a name server.
- B. Convert contoso.com to an Active Directory-integrated zone.

- C. Create a zone delegation that points to Server2.
- D. Create a trust anchor named Server2.

**Correct Answer:** A

**Section:** (none)

**Explanation**

**Explanation/Reference:**

#### **QUESTION 29**

Your network contains an Active Directory domain named contoso.com. The domain contains more than 100 Group Policy objects (GPOs). Currently, there are no enforced GPOs.

The domain contains a GPO named GPO 1. GPO1 contains several Group Policy preferences. You need to view all of the preferences configured in GPO 1. What should you use?

- A. Dcgpofix
- B. Get-GPOReport
- C. Gpfixup
- D. Gpresult
- E. Gptedit.msc
- F. Import-GPO
- G. Restore-GPO
- H. Set-GPInheritance
- I. Set-GPLink
- J. Set-GPPermission
- K. Gpupdate
- L. Add-ADGroupMember

**Correct Answer:** B

**Section:** (none)

**Explanation**

**Explanation/Reference:**

#### **QUESTION 30**

Your network contains an Active Directory domain named contoso.com. The domain contains more than 100 Group Policy objects (GPOs). Currently, there are no enforced GPOs. You need to prevent all of the GPOs at the site level and at the domain level from being applied to users and computers in an organizational unit (OU) named OU1. You want to achieve this goal by using the minimum amount of Administrative effort. What should you use?

- A. Dcgpofix
- B. Get-GPOReport
- C. Gpfixup
- D. Gpresult
- E. Gptedit.msc
- F. Import-GPO
- G. Restore-GPO
- H. Set-GPInheritance
- I. Set-GPLink
- J. Set-GPPermission

- K. Gpupdate
- L. Add-ADGroupMember

**Correct Answer:** G

**Section:** (none)

**Explanation**

**Explanation/Reference:**

### QUESTION 31

Your network contains an Active Directory domain named contoso.com. The domain contains more than 100 Group Policy objects (GPOs). Currently, there are no enforced GPOs. You have two GPOs linked to an organizational unit (OU) named OU1. You need to change the precedence order of the GPOs. What should you use?

- A. Dcgpofix
- B. Get-GPOReport
- C. Gpfixup
- D. Gpresult
- E. Gptedit.msc
- F. Import-GPO
- G. Restore-GPO
- H. Set-GPInheritance
- I. Set-GPLink
- J. Set-GPPermission
- K. Gpupdate
- L. Add-ADGroupMember

**Correct Answer:** I

**Section:** (none)

**Explanation**

**Explanation/Reference:**

### QUESTION 32

Your network contains an Active Directory domain named contoso.com. The domain contains more than 100 Group Policy objects (GPOs). Currently, there are no enforced GPOs. You need to provide an Administrator named Admin1 with the ability to create GPOs in the domain. The solution must not provide Admin1 with the ability to link GPOs. What should you use?

- A. Dcgpofix
- B. Get-GPOReport
- C. Gpfixup
- D. Gpresult
- E. Gptedit.msc
- F. Import-GPO
- G. Restore-GPO
- H. Set-GPInheritance
- I. Set-GPLink
- J. Set-GPPermission
- K. Gpupdate

L. Add-ADGroupMember

**Correct Answer:** L

**Section:** (none)

**Explanation**

**Explanation/Reference:**

### QUESTION 33

Your network contains an Active Directory domain named contoso.com. All servers run Windows Server 2012. The domain contains two servers. The servers are configured as shown in the following table.

Server name	Configuration
DC1	DNS server Domain controller Enterprise certification authority (CA)
Server2	Network Policy Server (NPS) Health Registration Authority (HRA)

All client computers run Windows 8 Enterprise. You plan to deploy Network Access Protection (NAP) by using IPsec enforcement. A Group Policy object (GPO) named GPO1 is configured to deploy a trusted server group to all of the client computers. You need to ensure that the client computers can discover HRA servers automatically. Which three actions should you perform? (Each correct answer presents part of the solution. Choose three.)

- A. On DC1, create a service location (SRV) record
- B. On Server2, configure the EnableDiscovery registry key.
- C. On all of the client computers, configure the EnableDiscovery registry key.
- D. In a GPO, modify the Request Policy setting for the NAP Client Configuration.
- E. On Dc1, create an alias (CNAME) record.

**Correct Answer:** BCE

**Section:** (none)

**Explanation**

**Explanation/Reference:**



<http://www.gratisexam.com/>

### QUESTION 34

Your network contains an Active Directory domain named contoso.com. The domain contains a server named Admin1 that runs Windows Server 2012. Admin1 has the Network Policy Server role service installed. You plan to configure Admin1 as a Network Access Protection (NAP) health policy server for VPN enforcement by using the Configure NAF wizard. You need to ensure that you can configure the VPN enforcement method on Admin1 successfully. What should you install on Admin1 before you run the Configure NAP wizard?

- A. The Host Credential Authorization Protocol (HCAP)
- B. A system health validator (SHV)



- C. The Remote Access server role
- D. A computer certificate

**Correct Answer:** D

**Section:** (none)

**Explanation**

**Explanation/Reference:**

### **QUESTION 35**

You deploy two servers named Admin1 and Server2. You install Network Policy Server (NPS) on both servers. On Admin1, you configure the following NPS settings:

- RADIUS Clients
- Network Policies
- Connection Request Policies
- SQL Server Logging Properties

You export the NPS configurations to a file and import the file to Server2. You need to ensure that the NPS configurations on Server2 are the same as the NPS configurations on Admin1. Which settings should you manually configure on Server2?

- A. SQL Server Logging Properties
- B. Connection Request Policies
- C. RADIUS Clients
- D. Network Policies

**Correct Answer:** A

**Section:** (none)

**Explanation**

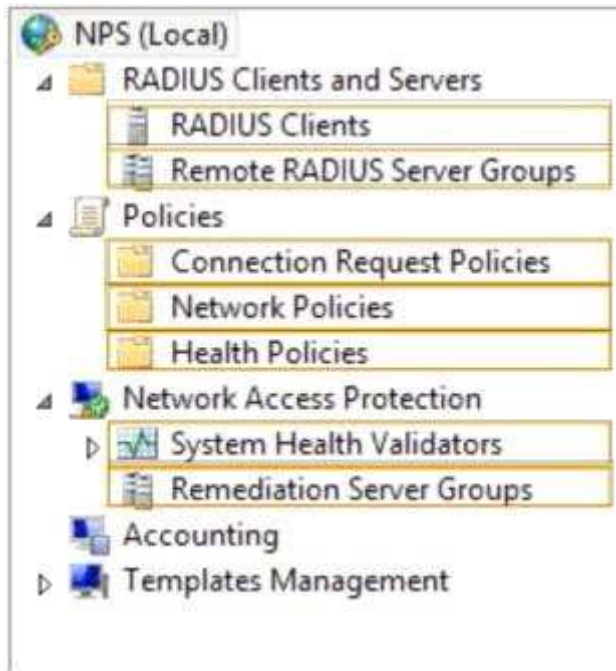
**Explanation/Reference:**

### **QUESTION 36**

Your network contains a RADIUS server named Admin1. You install a new server named Server2 that runs Windows Server 2012 and has Network Policy Server (NPS) installed. You need to ensure that all accounting requests for Server2 are forwarded to Admin1. On Server2, you create a new remote RADIUS server group named Group1 that contains Admin1. What should you configure next on Server2?

To answer, select the appropriate node in the answer area.

**Hot Area:**



Correct Answer:



Section: (none)

Explanation

Explanation/Reference:

### QUESTION 37

Your network contains an Active Directory domain named contoso.com. The domain contains more than 100 Group Policy objects (GPOs). Currently, there are no enforced GPOs. A network Admin1strator accidentally deletes the Default Domain Policy GPO. You do not have a backup of any

of the GPOs. You need to recreate the Default Domain Policy GPO. What should you use?

- A. Dcgpofix
- B. Get-GPOReport
- C. Gpfixup Gpresult
- D. Gptedit.msc
- E. Import-GPO
- F. Restore-GPO
- G. Set-GPInheritance
- H. Set-GPLink
- I. Set-GPPermission
- J. Gpupdate
- K. Add-ADGroupMember

**Correct Answer:** A

**Section:** (none)

**Explanation**

**Explanation/Reference:**

#### **QUESTION 38**

Your network contains an Active Directory domain named contoso.com. The domain contains more than 100 Group Policy objects (GPOs). Currently, there are no enforced GPOs. You have two GPOs linked to an organizational unit (OU) named OU1. You need to change the precedence order of the GPOs. What should you use?

- A. Dcgpofix
- B. Get-GPOReport
- C. Gpfixup
- D. Gpresult
- E. Gptedit.msc
- F. Import-GPO
- G. Restore-GPO
- H. Set-GPInheritance
- I. Set-GPLink
- J. Set-GPPermission
- K. Gpupdate
- L. Add-ADGroupMember

**Correct Answer:** I

**Section:** (none)

**Explanation**

**Explanation/Reference:**

#### **QUESTION 39**

Your network contains an Active Directory domain named contoso.com. The domain contains more than 100 Group Policy objects (GPOs). Currently, there are no enforced GPOs. The domain contains a top-level organizational unit (OU) for each department. A group named Group1 contains members from each department. You have a GPO named GPO1 that is linked to the domain. You need to configure GPO1 to apply settings to Group1 only. What should you use?

- A. Dcgpofix
- B. Get-GPOReport
- C. Gpfixup
- D. Gpresult
- E. Gptedit.msc
- F. Import-GPO
- G. Restore-GPO
- H. Set-GPIInheritance
- I. Set-GPLink
- J. Set-GPPermission
- K. Gpupdate
- L. Add-ADGroupMember

**Correct Answer:** J

**Section:** (none)

**Explanation**

**Explanation/Reference:**

#### **QUESTION 40**

Your network contains an Active Directory domain named contoso.com. The domain does not contain a certification authority (CA). All servers run Windows Server 2012. All client computers run Windows 8. You need to add a data recovery agent for the Encrypting File System (EFS) to the domain. Which two actions should you perform? (Each correct answer presents part of the solution. Choose two.)

- A. From Windows PowerShell, run Get-Certificate.
- B. From the Default Domain Controllers Policy, select Create Data Recovery Agent.
- C. From the Default Domain Policy, select Add Data Recovery Agent.
- D. From a command prompt, run cipher.exe.
- E. From the Default Domain Policy, select Create Data Recovery Agent.
- F. From the Default Domain Controllers Policy, select Add Data Recovery Agent.

**Correct Answer:** BE

**Section:** (none)

**Explanation**

**Explanation/Reference:**

#### **QUESTION 41**

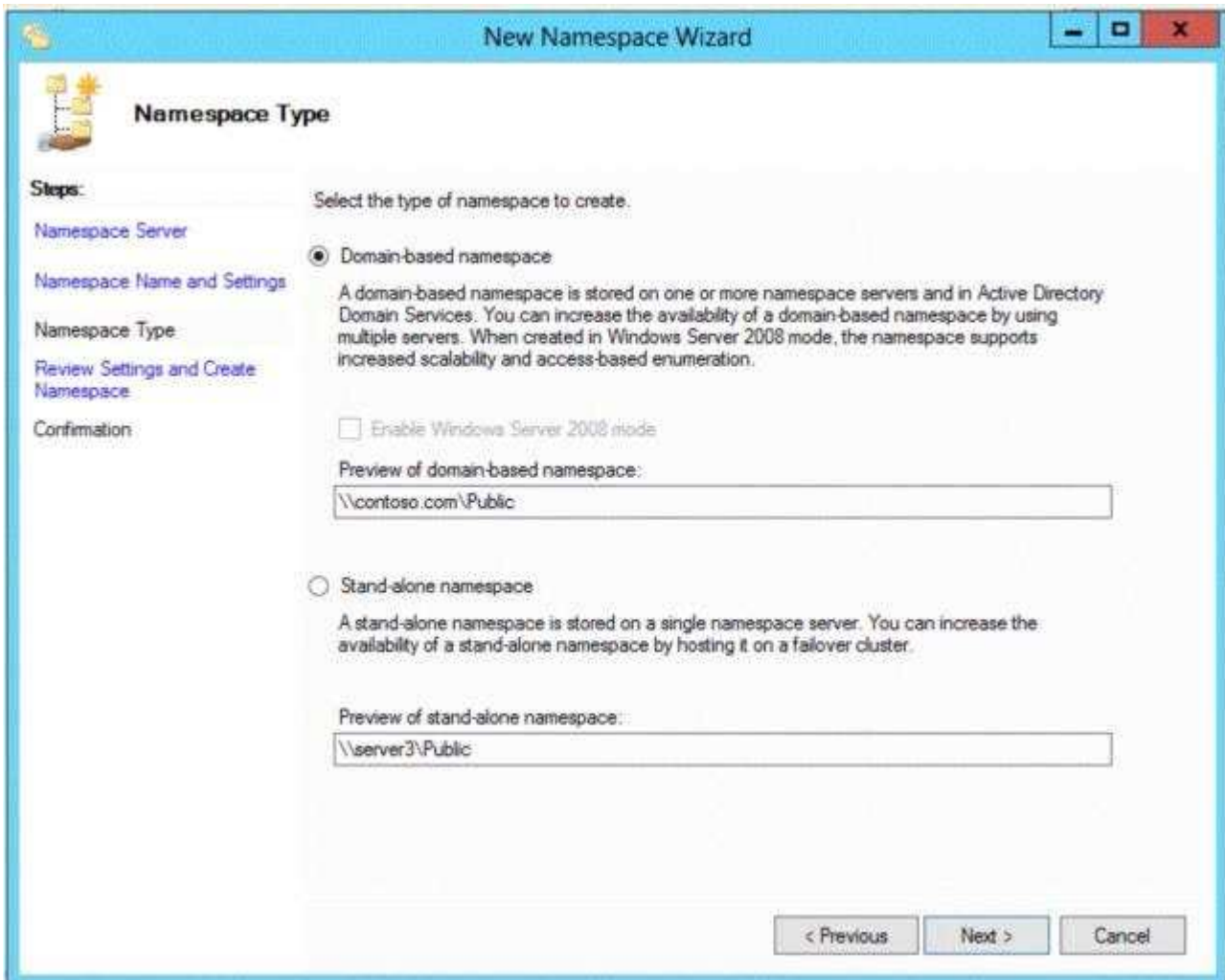
Your network contains an Active Directory domain named contoso.com. The domain contains three domain controllers. The domain controllers are configured as shown in the following table.

Domain controller name	Operating system	Operations master role
Server1	Windows Server 2008 R2	PDC emulator Infrastructure master
Server2	Windows Server 2008 R2	RID master
Server3	Windows Server 2012	Schema master

You are creating a Distributed File System (DFS) namespace as shown in the exhibit. (Click the Exhibit button.)

You need to identify which configuration prevents you from creating a DFS namespace in Windows Server 2008 mode. Which configuration should you identify?

**Exhibit:**



- A. The location of the PDC emulator role
- B. The functional level of the domain

- C. The operating system on Admin1 and Server3
- D. The location of the RID master role

**Correct Answer:** B

**Section:** (none)

**Explanation**

**Explanation/Reference:**

#### **QUESTION 42**

Your network contains an Active Directory domain named adatum.com. You need to audit changes to the files in the SYSVOL shares on all of the domain controllers. The solution must minimize the amount of SYSVOL replication traffic caused by the audit. Which two settings should you configure? (Each correct answer presents part of the solution. Choose two.)

- A. Audit Policy\Audit system events
- B. Advanced Audit Policy Configuration\DS Access
- C. Advanced Audit Policy Configuration\Global Object Access Auditing
- D. Audit Policy\Audit object access
- E. Audit Policy\Audit directory service access
- F. Advanced Audit Policy Configuration\Object Access

**Correct Answer:** DF

**Section:** (none)

**Explanation**

**Explanation/Reference:**

#### **QUESTION 43**

Your network contains multiple Active Directory sites. You have a Distributed File System (DFS) namespace that has a folder target in each site. You discover that some client computers connect to DFS targets in other sites. You need to ensure that the client computers only connect to a DFS target in their respective site. What should you modify?

- A. The properties of the Active Directory sites
- B. The properties of the Active Directory site links
- C. The delegation settings of the namespace
- D. The referral settings of the namespace

**Correct Answer:** D

**Section:** (none)

**Explanation**

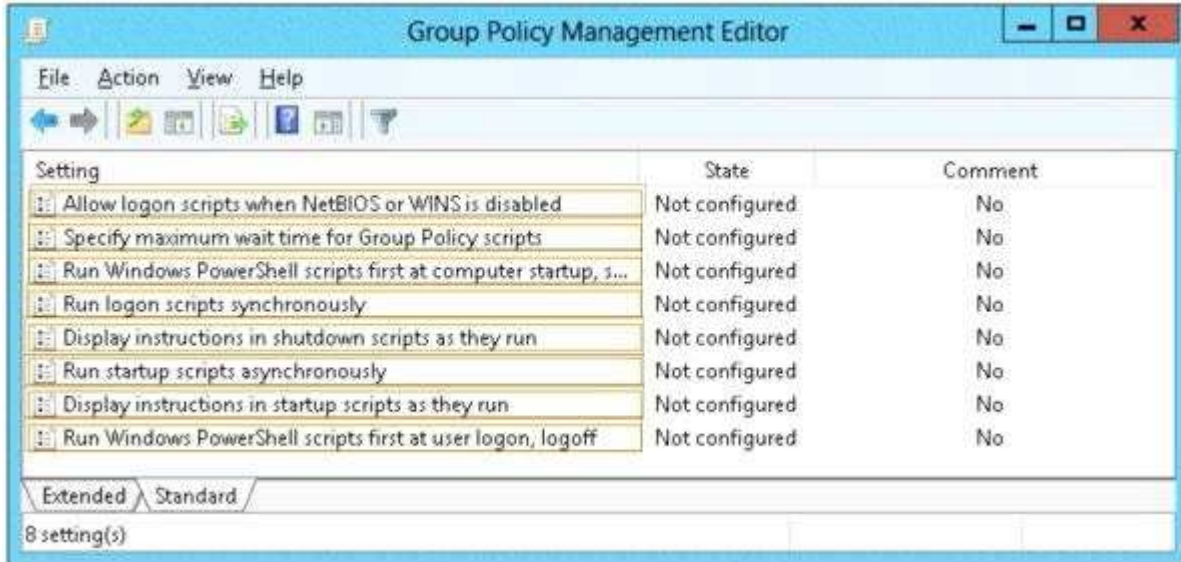
**Explanation/Reference:**

#### **QUESTION 44**

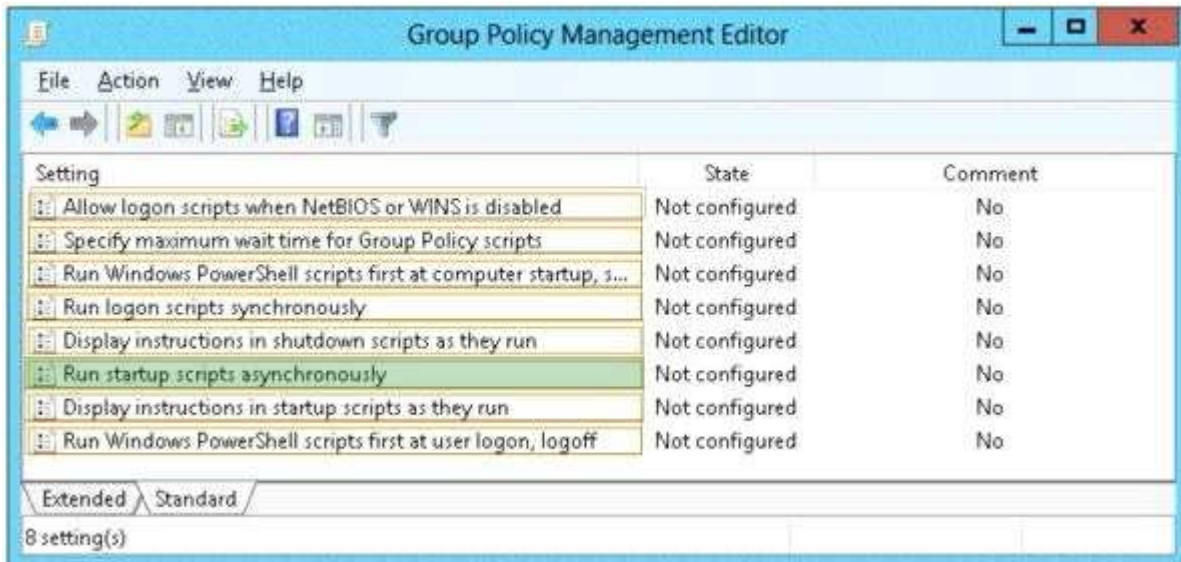
Your network contains an Active Directory domain named contoso.com. You have several Windows PowerShell scripts that execute when client computers start. When a client computer starts, you discover that it takes a long time before users are prompted to log on. You need to reduce the amount of time it takes for the client computers to start. The solution must not prevent scripts from completing successfully. Which setting should you configure?

To answer, select the appropriate setting in the answer area.

Hot Area:



Correct Answer:



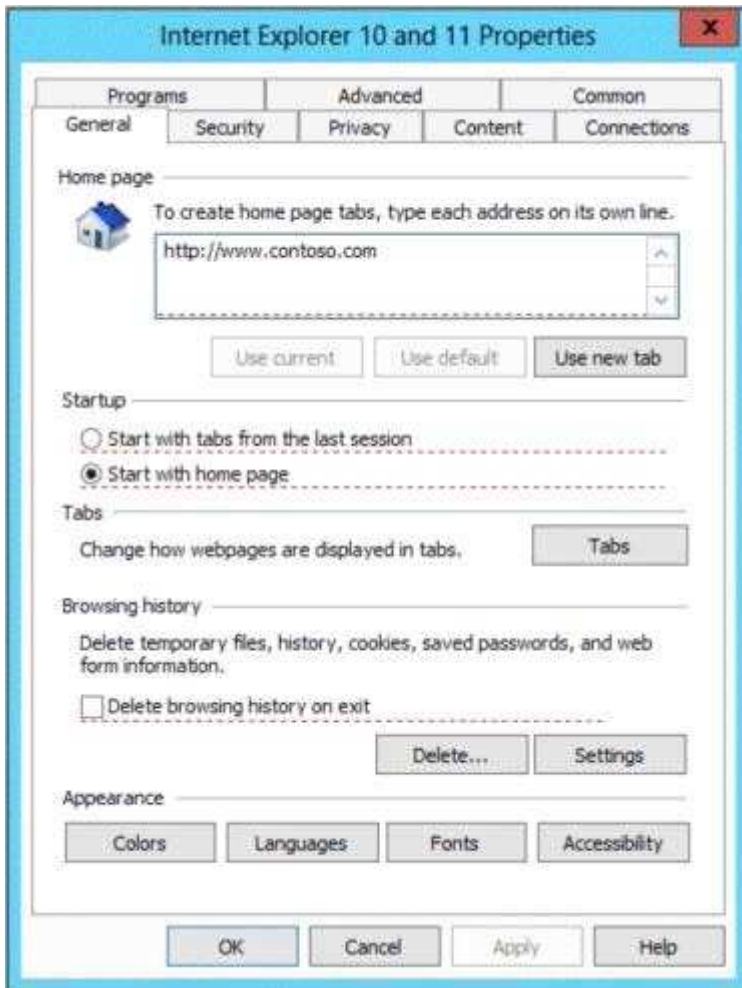
Section: (none)

Explanation

Explanation/Reference:

#### QUESTION 45

Your network contains an Active Directory domain named contoso.com. All client computers run Windows 8 Pro. You have a Group Policy object (GPO) named GP1. GP1 is linked to the domain. GP1 contains the Windows Internet Explorer 10 and 11 Internet Settings. The settings are shown in the exhibit.



Users report that when they open Windows Internet Explorer, the home page is NOT set to <http://www.contoso.com>. You need to ensure that the home page is set to <http://www.contoso.com> the next time users log on to the domain. What should you do?

- A. On each client computer, run `gpupdate.exe`
- B. Open the Internet Explorer 10 and 11 Internet Settings, and then press F5.
- C. Open the Internet Explorer 10 and 11 Internet Settings, and then modify the Tabs settings.
- D. On each client computer, run `Invoke-GPupdate`.

**Correct Answer: B**

**Section: (none)**

**Explanation**

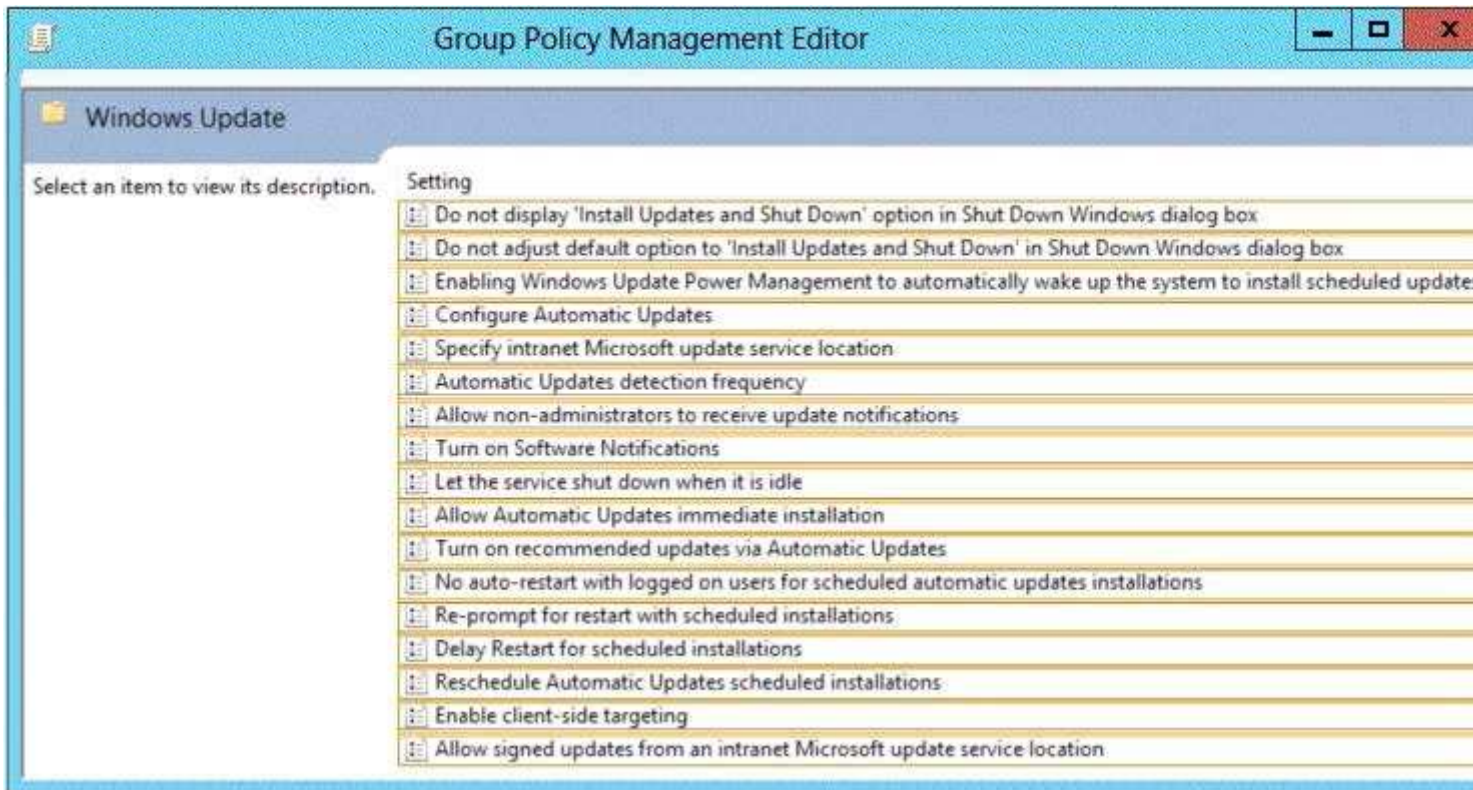
**Explanation/Reference:**

#### **QUESTION 46**

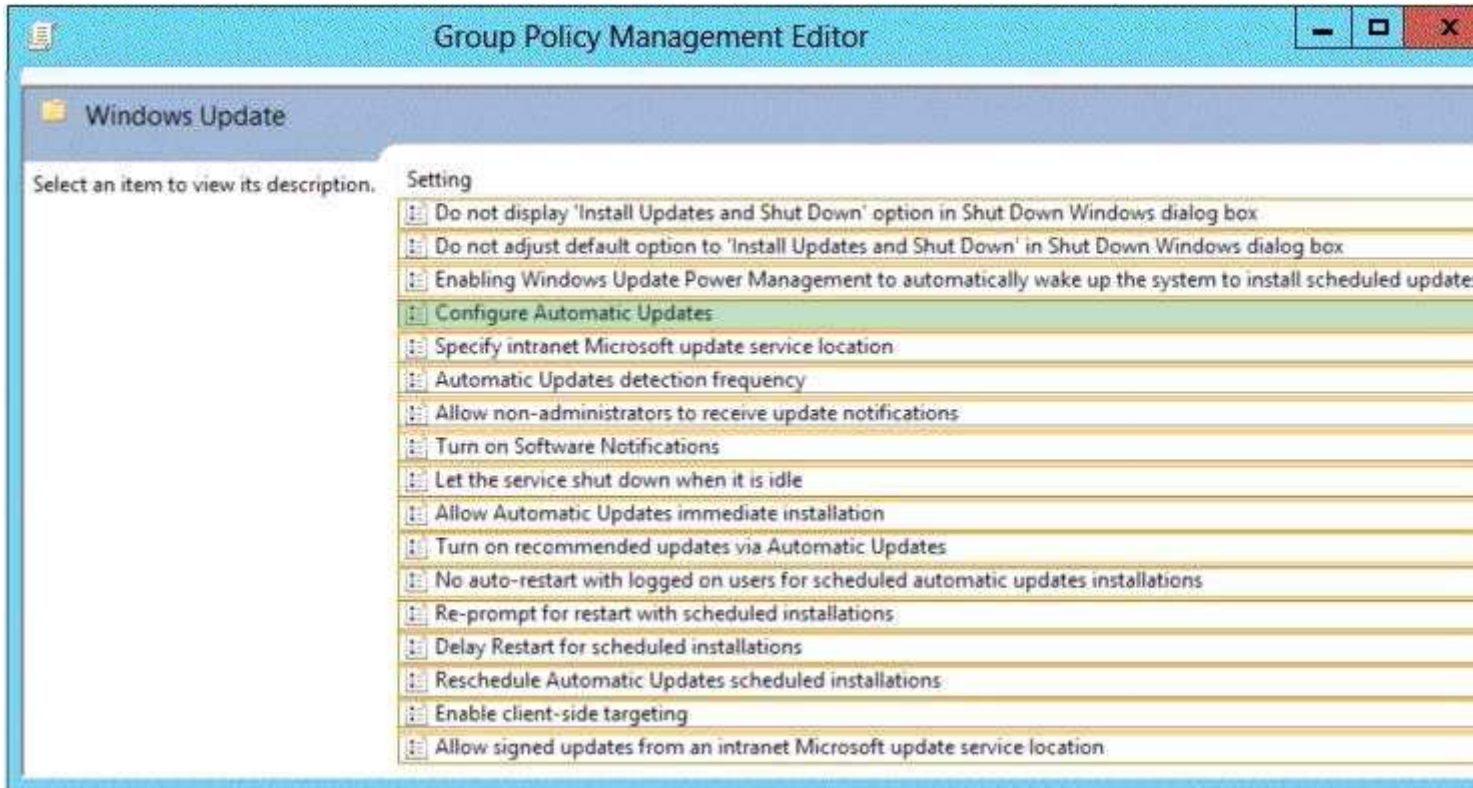
Your network contains an Active Directory domain named `contoso.com`. The domain contains a server named `Admin1` that runs Windows Server 2012. `Admin1` has the Windows Server Update Services server role installed. You have a Group Policy object (GPO) that configures the Windows Update settings. You need to modify the GPO to configure all client computers to install Windows updates every Wednesday at 01:00. Which setting should you configure in the GPO? To answer, select the appropriate setting in the answer area.



Hot Area:



Correct Answer:



Section: (none)

## Explanation

### Explanation/Reference:

#### QUESTION 47

You have a VHD that contains an image of Windows Server 2012. You need to apply an update package to the image. Which DISM option should you use?

- A. /Add-ProvisionedAppxPackage
- B. /Cleanup-Image
- C. /Add-Package
- D. /Apply-Unattend

**Correct Answer:** D

**Section:** (none)

## Explanation

### Explanation/Reference:

#### QUESTION 48

You have a server named Admin1 that runs Windows Server 2012. On Admin1, you configure a custom Data Collector Set (DCS) named DCS1. DCS1 is configured to store performance log data in C:\Logs. You need to ensure that the contents of C:\Logs are deleted automatically when the folder reaches 100 MB in size. What should you configure?

- A. A File Server Resource Manager (FSRM) quota on the C:\Logs folder
- B. A File Server Resource Manager (FSRM) file screen on the C:\Logs folder
- C. A schedule for DCS1
- D. The Data Manager settings of DCS1

**Correct Answer:** D

**Section:** (none)

## Explanation

### Explanation/Reference:

#### QUESTION 49

Your network contains an Active Directory domain named contoso.com. The domain contains a server named Admin1 that runs Windows Server 2012 and a server named Server2 that has the File Services server role installed. You install the Windows Deployment Services server role on Admin1. You plan to use Server2 as a reference computer. You need to create an image of Server2 by using Windows Deployment Services. Which type of image should you add to Admin1 first?

- A. Boot
- B. Discovery
- C. Install
- D. Capture

**Correct Answer:** A

**Section:** (none)

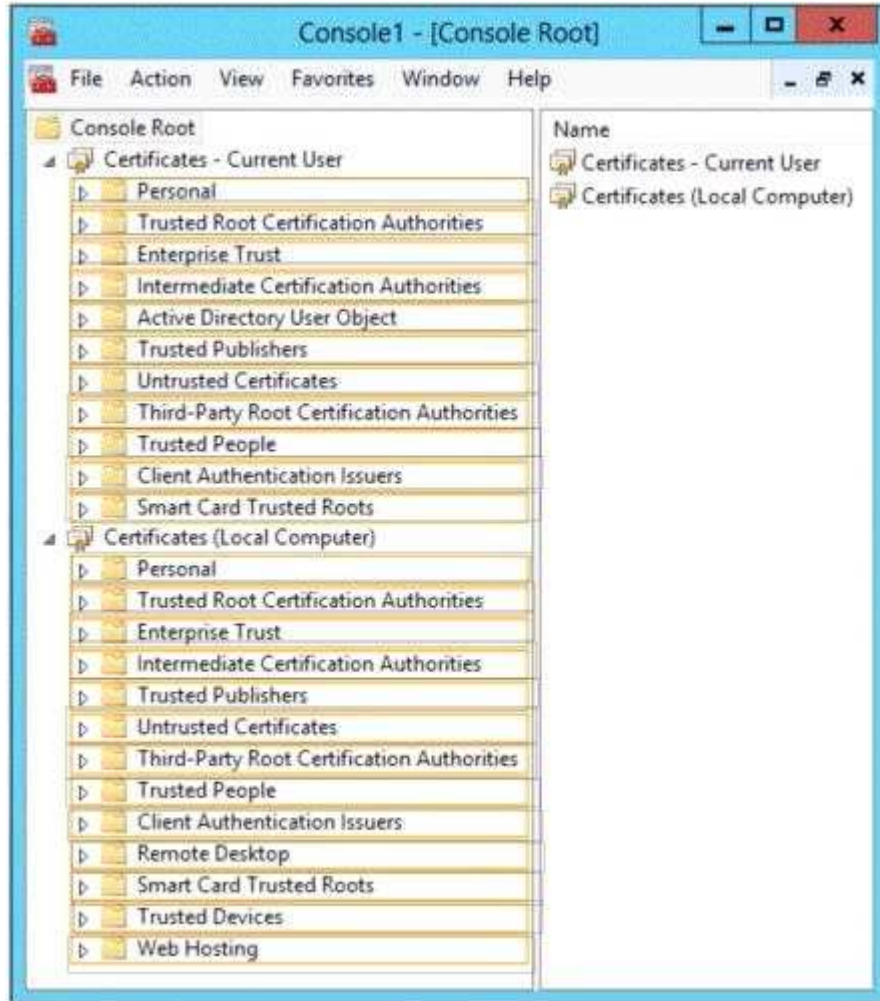
## Explanation

### Explanation/Reference:

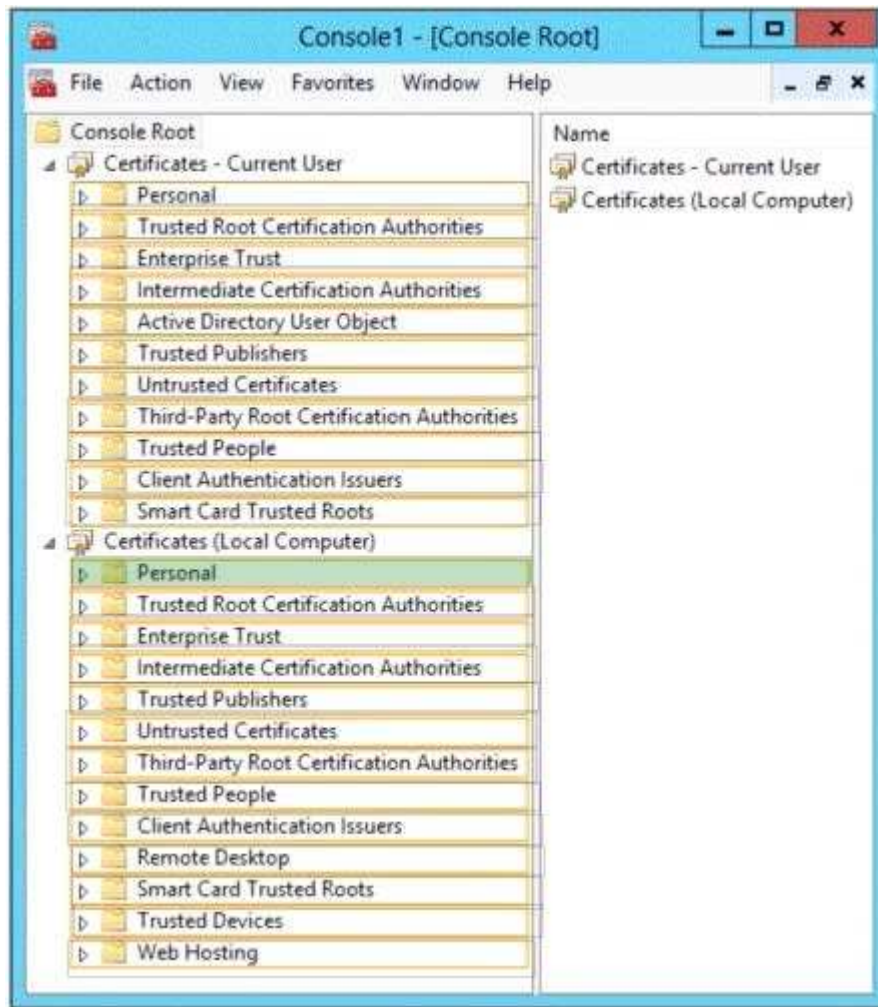
**QUESTION 50**

You have a server named Admin1 that has the Web Server (115) server role installed. You obtain a Web Server certificate. You need to configure a website on Admin1 to use Secure Sockets Layer (SSL). To which store should you import the certificate?

**Hot Area:**



**Correct Answer:**



**Section: (none)**

**Explanation**

**Explanation/Reference:**

**QUESTION 51**

You have a server named VPN1 that runs Windows Server 2012. VPN1 has the Remote Access server role installed. On VPN1, you create a network policy named PPTP\_Policy. You need to configure PPTP\_Policy to apply only to VPN connections that use the PPTP protocol. What should you configure in PPTP\_Policy?

- A. The Service Type
- B. The Tunnel Type
- C. The Framed Protocol
- D. The NAS Port Type

**Correct Answer: B**

**Section: (none)**

**Explanation**

**Explanation/Reference:**

**QUESTION 52**

Your network contains two Active Directory forests named contoso.com and adatum.com. The contoso.com forest contains a server named Admin1.contoso.com. The adatum.com forest contains a server named server2.adatum.com. Both servers have the Network Policy Server role service installed. The network contains a server named Server3. Server3 is located in the perimeter network and has the Network Policy Server role service installed. You plan to configure Server3 as an authentication provider for several VPN servers. You need to ensure that RADIUS requests received by Server3 for a specific VPN server are always forwarded to Admin1.contoso.com. Which two should you configure on Server3? (Each correct answer presents part of the solution. Choose two.)

- A. Network policies
- B. Remote RADIUS server groups
- C. Connection authorization policies
- D. Remediation server groups
- E. Connection request policies

**Correct Answer:** AC

**Section:** (none)

**Explanation**

**Explanation/Reference:**

**QUESTION 53**

Your network contains two Active Directory forests named adatum.com and contoso.com. The network contains three servers. The servers are configured as shown in the following table.

Server name	Configuration	Domain/workgroup
Server1	VPN server	Workgroup
Server2	Network Policy Server (NPS)	Adatum.com
Server3	Network Policy Server (NPS)	Contoso.com

You need to ensure that connection requests from adatum.com users are forwarded to Server2 and connection requests from contoso.com users are forwarded to Server3. Which two should you configure in the connection request policies on Admin1? (Each correct answer presents part of the solution. Choose two.)

- A. The Standard RADIUS Attributes settings
- B. The Location Groups condition
- C. The User Name condition
- D. The Identity Type condition
- E. The Authentication settings

**Correct Answer:** BD

**Section:** (none)

**Explanation**

**Explanation/Reference:**

**QUESTION 54**

Your network contains an Active Directory domain named contoso.com. All domain controllers run Windows Server 2012. On all of the domain controllers, Windows is installed in C:\Windows and the Active Directory database is located in D:\Windows\NTDS\.

All of the domain controllers have a third-party application installed.

The operating system fails to recognize that the application is compatible with domain controller cloning. You verify with the application vendor that the application supports domain controller cloning. You need to prepare a domain controller for cloning. What should you do?

- A. In D:\Windows\NTDS\, create an XML file named DCCloneConfig.xml and add the application information to the file
- B. In D:\Windows\NTDS\, create an XML file named CustomDCCloneAllowList.xml and add the application information to the file
- C. In the root of a USB flash drive, add the application information to an XML file named DefaultDCCloneAllowList.xml.
- D. In D:\Windows\NTDS, create an XML file named DefaultDCCloneAllowList.xml and add the application information to the file.

**Correct Answer:** A

**Section:** (none)

**Explanation**

**Explanation/Reference:**

**QUESTION 55**

Your network contains an Active Directory domain named contoso.com. The functional level of the forest is Windows Server 2008 P.2. Computer accounts for the marketing department are in an organizational unit (OU) named Departments\Marketing\Computers. User accounts for the marketing department are in an OU named Departments\Marketing\Users. All of the marketing user accounts are members of a global security group named MarketingUsers. All of the marketing computer accounts are members of a global security group named MarketingComputers. In the domain, you have Group Policy objects (GPQ5) as shown in the exhibit. (Click the Exhibit button.)





You create two Password Settings objects named PSO1 and PSO2. PSO1 is applied to MarketingUsers. PSO2 is applied to MarketingComputers. The minimum password length is defined for each policy as shown in the following table

Location	Minimum password length
Default Domain Policy	7
GPO1	5
GPO2	6
PSO1	10
PSO2	12

You need to identify the minimum password length required for each marketing user. What should you identify?

- A. 12
- B. 6
- C. 7
- D. 10
- E. 5

**Correct Answer: D**  
**Section: (none)**  
**Explanation**

**Explanation/Reference:**

**QUESTION 56**

Your network contains an Active Directory domain named adatum.com. The domain contains a domain controller named Admin1. On Admin1, you create a new volume named E. You restart Admin1 in Directory Service Restore Mode. You open ntdsutil.exe and you set NTDS as the active instance. You need to move the Active Directory logs to E:\NTDS\. Which Ntdsutil context should you use?

- A. IFM
- B. Configurable Settings
- C. Partition management
- D. Files

**Correct Answer: B**

**Section: (none)**

**Explanation**

**Explanation/Reference:**

**QUESTION 57**

Your network contains an Active Directory domain named contoso.com. The domain contains an organizational unit (OU) named IT and a CU named Sales. All of the help desk user accounts are located in the IT CU. All of the sales user accounts are located in the Sales CU. The Sales CU contains a global security group named G\_Sales. The IT CU contains a global security group named G\_HelpDesk. You need to ensure that members of G\_HelpDesk can perform the following tasks:

- Reset the passwords of the sales users.
- Force the sales users to change their password at their next logon.

What should you do?

- A. Run the Set-ADFinecrainedPasswordPolicy cmdlet and specify the -identity parameter.
- B. Right-click the IT CU and select Delegate Control.
- C. Right-click the Sales OU and select Delegate Control.
- D. Run the Set-ADAccountPassword cmdlet and specify the -identity parameter

**Correct Answer: B**

**Section: (none)**

**Explanation**

**Explanation/Reference:**

**QUESTION 58**

Your network contains an Active Directory domain named contoso.com. The domain contains a server named Admin1 that runs Windows Server 2012. You enable and configure Routing and Remote Access (RRAS) on Admin1. You create a user account named User1. You need to ensure that User1 can establish VPN connections to Admin1. What should you do?

- A. Add a RADIUS client.
- B. Create a connection request policy.
- C. Modify the members of the Remote Management Users group
- D. Modify the Dial-in setting of User1.



**Correct Answer:** D

**Section:** (none)

**Explanation**

**Explanation/Reference:**

**QUESTION 59**

Your network contains two servers named Admin1 and Server2. Both servers run Windows Server 2012 and have the DNS Server server role installed. Admin1 hosts a primary zone for contoso.com. Server2 hosts a secondary zone for contoso.com. The zone is not configured to notify secondary servers of changes automatically. You update several records on Admin1. You need to force the replication of the contoso.com zone records from Admin1 to Server2. What should you do from Server2?

- A. Right-click Server2 and click Update Server Data Files.
- B. Right-click Server2 and click Refresh.
- C. Right-click the contoso.com zone and click Reload.
- D. Right-click the contoso.com zone and click Transfer from Master.

**Correct Answer:** D

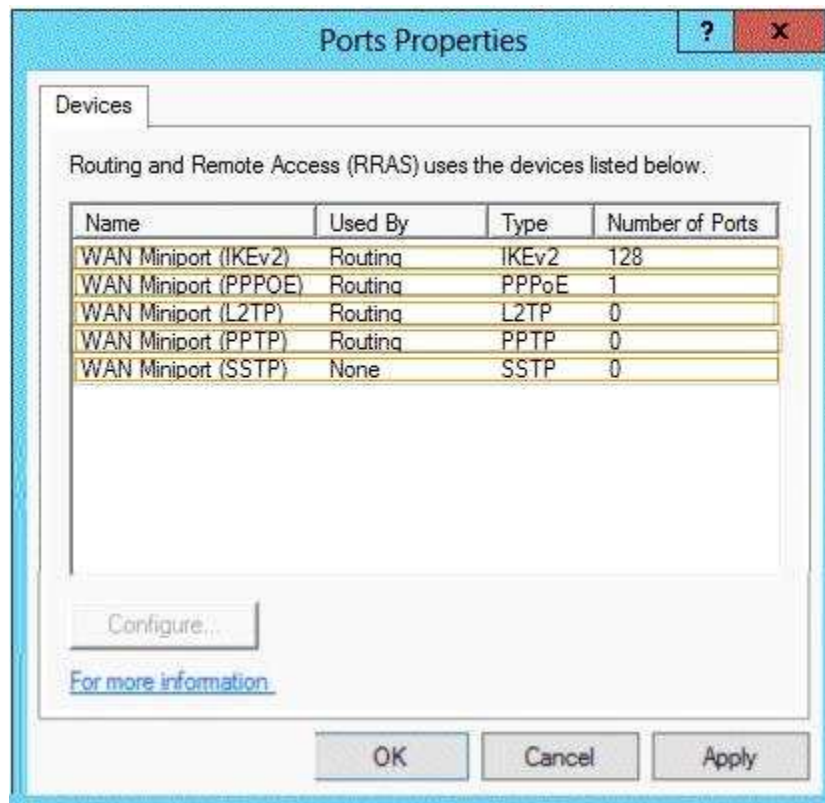
**Section:** (none)

**Explanation**

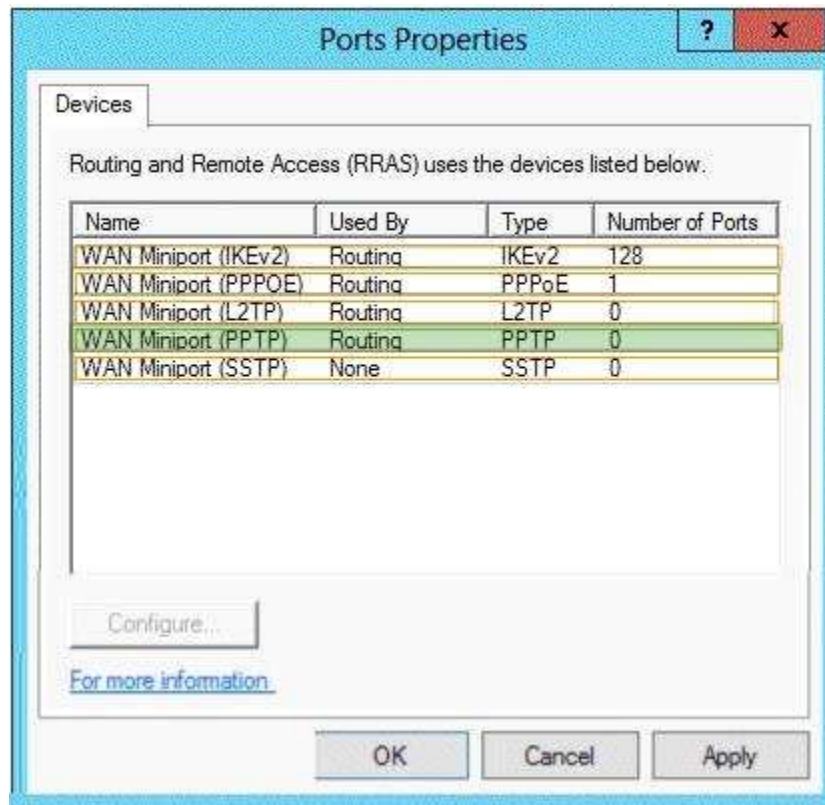
**Explanation/Reference:**

**QUESTION 60**

**Hot Area:**



Correct Answer:



Section: (none)

Explanation

Explanation/Reference:

#### QUESTION 61

You have a DNS server named Admin1 that has a Server Core Installation on Windows Server 2012. You need to view the time-to-live (TTL) value of a name server (NS) record that is cached by the DNS Server service on Admin1. What should you run?

- A. Show-DNSServerCache
- B. dnscacheugc.exe
- C. ipconfig.exe /displaydns
- D. nslookup.exe

Correct Answer: A

Section: (none)

Explanation

Explanation/Reference:



<http://www.gratisexam.com/>