

CITRIX 1Y0-A14 EXAM QUESTIONS & ANSWERS

Number: 1Y0-A14
Passing Score: 800
Time Limit: 90 min
File Version: 42.2



<http://www.gratisexam.com/>



VISUAL
exams

CITRIX 1Y0-A14 EXAM QUESTIONS & ANSWERS

Exam Name: Implementing Citrix XenDesktop 3

Visualexams

QUESTION 1

An administrator is configuring Access Gateway for users that will be connecting to virtual desktops remotely. The administrator needs to include settings for network traffic to XenDesktop.

Which component should the administrator configure to communicate with the Access Gateway?

- A. Web Interface
- B. Domain Controller
- C. Virtual Desktop Agent
- D. Desktop Delivery Controller

Correct Answer: A

Section: (none)

Explanation

Explanation/Reference:

*

QUESTION 2

A user is attempting to access a virtual desktop provided by Provisioning Services. The Desktop Delivery Controller has requested that the virtual machine infrastructure boot the virtual desktop.

Which step in the desktop delivery process occurs next?

- A. The disk image will be streamed to the virtual desktop
- B. The Desktop Delivery Controller will query the license server
- C. The Profile Management feature will apply user profile settings to the virtual desktop
- D. The computer account of the virtual desktop will be created in Microsoft Active Directory

Correct Answer: A

Section: (none)

Explanation

Explanation/Reference:

QUESTION 3

An administrator created multiple policies in a XenDesktop environment. Each policy has various policy rules configured with multiple filters based on how users access virtual desktops, the desktop group a user belongs to, and the client IP address.

When a user logs on to access a virtual desktop, only the _____ will be applied to the user. (Choose the correct phrase to complete the sentence.)

- A. resultant policy
- B. highest priority policy
- C. policies without conflicts
- D. most recently created policy

Correct Answer: A

Section: (none)

Explanation

Explanation/Reference:

QUESTION 4

An administrator just created a desktop group that will assign virtual desktops to users upon first use of the desktop. The administrator now decides to change the desktop group so that the virtual desktops are pre-assigned.

What must the administrator do to change the desktop group from assign on first use to pre-assigned?

- A. Recreate the desktop group using the Access Management Console
- B. Change the settings of the desktop group using the XenDesktop Setup Wizard
- C. Reconfigure the properties of the desktop group using the Access Management Console
- D. Assign the desktop group to a new organizational unit using the Active Directory Configuration Wizard

Correct Answer: A

Section: (none)

Explanation

Explanation/Reference:

QUESTION 5

An administrator is creating a vDisk in a XenDesktop environment and wants to enable automatic vDisk updates.

Which two vDisk properties must the administrator configure in order for a newer vDisk to replace an older vDisk? (Choose two.)

- A. Date
- B. Type
- C. Class
- D. Description
- E. Serial number

Correct Answer: BC

Section: (none)

Explanation

Explanation/Reference:

QUESTION 6

An administrator is using the XenDesktop Setup Wizard to build several virtual desktops and needs to specify the address of the XenServer infrastructure.

Which two pieces of information can be used as the address of the XenServer infrastructure? (Choose two.)

- A. FQDN
- B. IP address
- C. Farm name
- D. MAC address

Correct Answer: AB

Section: (none)

Explanation

Explanation/Reference:

QUESTION 7

A user connects to a XenDesktop virtual machine (VM) and then launches a XenApp published application. The user plays audio from both the application and the desktop. The audio in the application is set to high, yet the

user only hears low quality audio.

Which change does the administrator need to make to improve the audio quality?



<http://www.gratisexam.com/>

- A. Reinstall the local sound driver
- B. Change the bit-rate on the XenApp policy
- C. Set the audio quality on the XenApp policy to low
- D. Set the audio quality to high on the XenDesktop policy

Correct Answer: D

Section: (none)

Explanation

Explanation/Reference:

QUESTION 8

In which scenario should an administrator enable user-driven desktop restart?

- A. Users need to restart virtual desktops when they take too long to appear
- B. Users need to resume working where they left off when a virtual desktop is restarted
- C. Users need to restart both the local desktop and the virtual desktop at the same time
- D. Users need any unsaved work to be saved automatically when restarting a virtual desktop

Correct Answer: A

Section: (none)

Explanation

Explanation/Reference:

QUESTION 9

Which information does an administrator need to add a virtual machine (VM) to Provisioning Services?

- A. The IP address of the VM
- B. The MAC address of the VM
- C. The IP address(es) of the Provisioning Server(s)
- D. The name(s) of the virtual interface(s) associated with the VM

Correct Answer: B

Section: (none)

Explanation

Explanation/Reference:

QUESTION 10

Which two fields must an administrator configure the bootstrap settings to use when configuring Provisioning Services for PXE in a XenDesktop environment? (Choose two.)

- A. Gateway
- B. Subnet Mask
- C. MAC Address
- D. Desktop Delivery Controller IP Address

Correct Answer: AB

Section: (none)

Explanation

Explanation/Reference:

QUESTION 11

Which server hardware requirements must an administrator consider when setting up a resource pool for a XenDesktop environment?

- A. Local disk type and size
- B. CPU vendor and version
- C. Network speed and chipset
- D. Graphics card vendor and memory

Correct Answer: B

Section: (none)

Explanation

Explanation/Reference:

QUESTION 12

Which action should an administrator take to increase the amount of time an endpoint device stays connected to a virtual desktop to 48 hours if there is no input from the user?

- A. Update the disconnect timer
- B. Update the connection idle timer
- C. Use the default setting for the disconnect timer
- D. Use the default setting for the connection idle timer

Correct Answer: B

Section: (none)

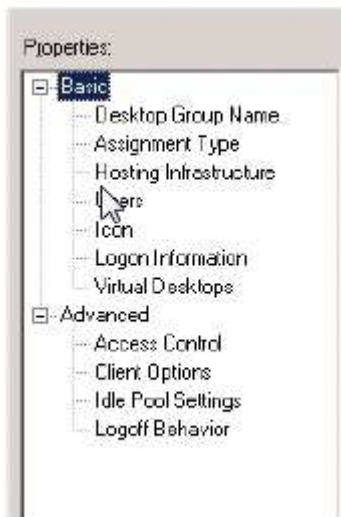
Explanation

Explanation/Reference:

QUESTION 13

An administrator needs to change the connection default encryption settings of a desktop group to 128-Bit Login Only (RC-5).

Click on the Exhibit button to view a screenshot of the desktop group properties.



In which setting in the desktop properties can this be done?

- A. Client Options
- B. Access Control
- C. Virtual Desktops
- D. Logon Information

Correct Answer: A

Section: (none)

Explanation

Explanation/Reference:

QUESTION 14

An administrator has created a new Proof of Concept environment; however, none of the new machines have registered.

What is one of the possible reasons the machines are NOT registering?

- A. ICA traffic is being blocked by the local router
- B. DHCP has assigned an incorrect MAC address to the VM
- C. XenServer tools have not been installed on the Desktop Delivery Controller or VM
- D. The DNS record for the Desktop Delivery Controller is showing an incorrect IP address

Correct Answer: D

Section: (none)

Explanation

Explanation/Reference:

QUESTION 15

How should an administrator deliver applications from two departmental XenApp farms into a single XenDesktop virtual machine?

- A. Install multiple XenApp plugins
- B. Set up zone preference and failover

- C. Aggregate the farms using Web Interface
- D. Consolidate the two farms into a single zone

Correct Answer: C

Section: (none)

Explanation

Explanation/Reference:

QUESTION 16

An administrator is expanding an existing XenDesktop environment and needs to add more virtual machines (VMs).

Which two tools can be used to attach VMs to Provisioning Services? (Choose two.)

- A. XenCenter
- B. XenDesktop Setup Wizard
- C. Provisioning Server Console
- D. Access Management Console

Correct Answer: BC

Section: (none)

Explanation

Explanation/Reference:

QUESTION 17

Which two steps should an administrator take to disable defragmentation on the target devices in a XenDesktop environment? (Choose two.)

- A. Edit the properties of the target device
- B. Put the vDisk in Standard Image Mode
- C. Run the Provisioning Server Device Optimizer
- D. Install the target device software on a virtual machine

Correct Answer: CD

Section: (none)

Explanation

Explanation/Reference:

QUESTION 18

Which two types of profiles must an administrator use to allow the Profile Management feature to migrate profiles automatically? (Choose two.)

- A. Local
- B. Sepago
- C. Roaming
- D. Mandatory

Correct Answer: AC

Section: (none)

Explanation

Explanation/Reference:

*

QUESTION 19

An administrator created several streamed applications in a XenDesktop environment. The administrator wants to pre-cache the applications on the vDisk to enhance the user experience.

What must the administrator do before the streamed applications can be pre-cached successfully?

- A. Enable Session Reliability
- B. Ensure the vDisk is in Private Image mode
- C. Configure a XenApp policy to allow pre-caching
- D. Configure a DesktopAppliance Web Interface site

Correct Answer: C

Section: (none)

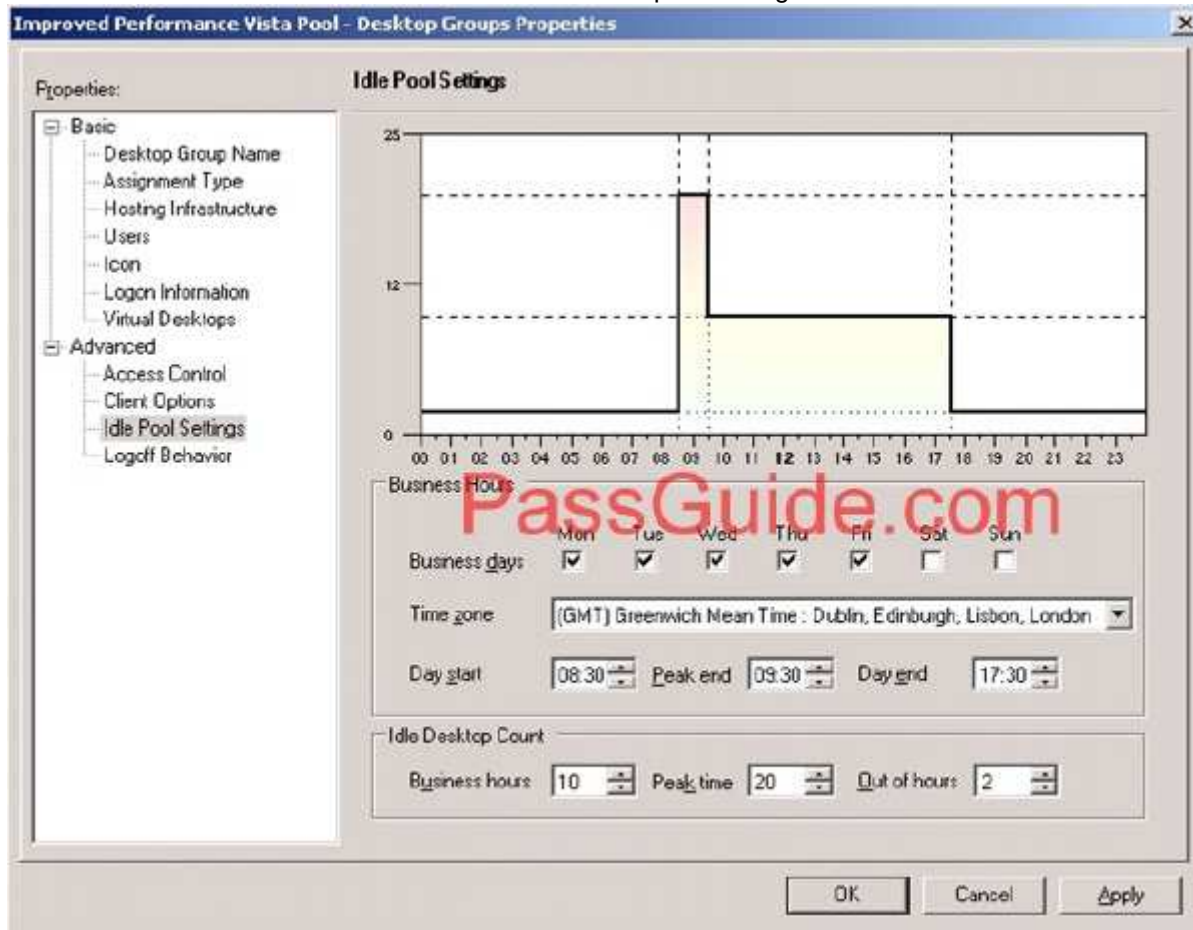
Explanation

Explanation/Reference:

QUESTION 20

An idle pool is configured as shown in the Exhibit.

Click the Exhibit button to view a screenshot of the idle pool settings.



How many virtual desktops are in the powered-on state at 11:00 AM if there are fifteen users already logged on?

- A. 15
- B. 17
- C. 25
- D. 35

Correct Answer: C

Section: (none)

Explanation

Explanation/Reference:

*

QUESTION 21

An administrator needs to provide desktops for 1000 users and wants to use Provisioning Services. What would be the advantage of putting the vDisk in Standard Image mode instead of Private Image mode?

- A. Provides high availability
- B. Enables automatic updates
- C. Reduces storage requirements
- D. Allows user updates to be retained

Correct Answer: C

Section: (none)

Explanation

Explanation/Reference:

*

QUESTION 22

In order to allow multiple computers in a XenDesktop environment to boot from a vDisk simultaneously, an administrator needs to _____. (Choose the correct phrase to complete the sentence.)

- A. enable high availability
- B. remove any locks from the vDisk
- C. set the Access Mode to Standard Image
- D. allow the vDisk to write cache on the RAM of the target device

Correct Answer: C

Section: (none)

Explanation

Explanation/Reference:

QUESTION 23

Which two items must an administrator configure before a vDisk can be created within Provisioning Services? (Choose two.)

- A. Site
- B. Store
- C. Target device
- D. Device collection

Correct Answer: AB

Section: (none)

Explanation

Explanation/Reference:

QUESTION 24

An administrator must create a desktop group that contains several virtual desktops that all have the same operating system and applications. The virtual desktops can be accessed by any user in the company. Which two methods can the administrator use to accomplish this task? (Choose two.)

- A. In the XenDesktop Setup Wizard, select the Create new desktop group option
- B. In the Access Management Console, change the assignment type of an existing desktop group
- C. In the Access Management Console, select the Desktop Groups folder, click on Create desktop group task and select Pooled on the Assignment Type screen
- D. In the Access Management Console, select the Desktop Groups folder, click on Create desktop group and select Assigned and then Assign on first use on the Assignment Type screen

Correct Answer: AC

Section: (none)

Explanation

Explanation/Reference:

QUESTION 25

The remote access Web Interface site used with the Access Gateway communicates with the _____ service on the Desktop Delivery Controller. (Choose the correct option to complete the sentence.)

- A. XML
- B. CGP Server
- C. Pool Management
- D. Remote Procedure Call

Correct Answer: A

Section: (none)

Explanation

Explanation/Reference:

QUESTION 26

An administrator has changed the settings of a XenDesktop policy. In which two scenarios will the new policy settings be applied? (Choose two.)

- A. A user logs onto a new session
- B. A user restarts an application on their virtual desktop
- C. A user plugs in a USB device on their endpoint device
- D. A user reconnects to a previously disconnected session

Correct Answer: AD

Section: (none)

Explanation

Explanation/Reference:

*

QUESTION 27

An administrator is creating a virtual desktop that will have the capability to run hosted applications that appear in the Start menu.

Which two items does the administrator need to install on the virtual desktop in order to see the applications in the Start menu? (Choose two.)

- A. Citrix XenApp
- B. Web Interface
- C. XenApp Plugin for Hosted Apps
- D. Citrix XenApp Plugin for Streamed Apps

Correct Answer: AC

Section: (none)

Explanation

Explanation/Reference:

QUESTION 28

Which step must an administrator take to link a virtual machine (VM) to a vDisk in Provisioning Services?

- A. Set the vDisk to Standard Image mode
- B. Add the VM to the same farm as the Provisioning Server
- C. Create a target device that has the same MAC address as the VM
- D. Use the same class name for both the vDisk and the target device

Correct Answer: C

Section: (none)

Explanation

Explanation/Reference:

To be check

QUESTION 29

An administrator set up a desktop group and provided the users with the ability to use remote USB devices in their virtual machine. After setting this up, the administrator gets calls from users who state that they are unable to see the USB devices in their virtual machines.

Which two actions can the administrator take to resolve this issue? (Choose two.)

- A. Ensure that the device is not isochronous
- B. Enable the USB policy for the desktop group
- C. Check that XenServer tools is installed on the base image
- D. Ensure that the firewall is not blocking USB communication
- E. Install the device drivers for the USB device on user endpoint devices

Correct Answer: AB

Section: (none)

Explanation

Explanation/Reference:

QUESTION 30

An administrator needs to build a virtual desktop image that will use Microsoft Windows Vista and specific USB drivers for environmental monitoring. This virtual desktop image will be used by several virtual machines (VMs)

in a XenDesktop environment.

How should the administrator create the virtual desktop image?

- A. Create a VM with Microsoft Windows Vista. Create a vDisk on the Provisioning Server. Install the USB drivers on the VM. Restart the VM. Run Provisioning Server Image Builder to create the image.
- B. Create a vDisk and a target device on the Provisioning Server. Install Microsoft Windows Vista and the USB drivers on the vDisk. Run the XenDesktop Setup Wizard from the target device to create the image.
- C. Create a target device with Microsoft Windows Vista and the USB drivers. Create a vDisk on the Provisioning Server. Restart the target device. Ensure that the target device can communicate with the vDisk. Run the XenDesktop Setup Wizard from the target device to create the image.
- D. Create a VM with Microsoft Windows Vista and the USB drivers. Create a vDisk and a target device on the Provisioning Server. Install Target Device software onto the VM. Restart the VM. Ensure that the VM can communicate with the vDisk. Run Provisioning Server Image Builder to create the image.

Correct Answer: D

Section: (none)

Explanation

Explanation/Reference:

QUESTION 31

A user is attempting to access a virtual desktop. The user submitted credentials to a Web Interface site through Access Gateway.

The Web Interface site will pass the user's credentials to the _____. (Choose the correct option to complete the sentence.)

- A. Data Store
- B. Desktop Receiver
- C. Desktop Delivery Controller
- D. Profile Management feature

Correct Answer: D

Section: (none)

Explanation

Explanation/Reference:

QUESTION 32

An administrator used the Desktop Delivery Controller (DDC) installation media to install the DDC in the XenDesktop farm of a company that has an existing web server infrastructure in place.

The administrator can increase performance and scalability of the DDC by _____ and _____. (Choose the two correct phrases to complete the sentence.)

- A. uninstalling Web Interface and IIS
- B. adjusting the current firewall configuration
- C. placing the DDC on the same controller as the license server
- D. ensuring that all computers in the farm are on the same domain
- E. installing Web Interface on the existing web server infrastructure

Correct Answer: AE

Section: (none)

Explanation

Explanation/Reference:

QUESTION 33

Which two entities can an administrator edit to update the list of USB devices users can access from virtual desktops without the use of Microsoft Active Directory? (Choose two.)

- A. ADM template
- B. Product default rules
- C. Desktop Receiver registry
- D. Virtual Desktop Agent registry
- E. Desktop Delivery Controller registry

Correct Answer: AC

Section: (none)

Explanation

Explanation/Reference:

QUESTION 34

An administrator is attempting to build a new image of a base Windows XP virtual machine (VM) using the Provisioning Server Image Builder. The last time the administrator followed the procedure the image took 15 minutes to build. However, in this instance the process has already taken over 30 minutes and is still in progress.

Which two changes could the administrator make to reduce the build time? (Choose two.)

- A. Install XenServer tools
- B. Set DisableTaskOffload in the registry
- C. Disable multipathing on the storage infrastructure
- D. Ensure DNS is consistent between the various components

Correct Answer: AB

Section: (none)

Explanation

Explanation/Reference:

QUESTION 35

What is the role of a DHCP server in a XenDesktop environment?

- A. Assigns an IP address to a virtual machine upon startup
- B. Sends the boot server host name to the vDisks in the farm
- C. Sends the boot file name to the Desktop Receiver upon startup
- D. Assigns MAC addresses to virtual desktops when they are created

Correct Answer: A

Section: (none)

Explanation

Explanation/Reference:

QUESTION 36

Which two options should an administrator enable in the DHCP server to allow Provisioning Services to provide PXE boot information to the target device? (Choose two.)

- A. 64
- B. 65
- C. 66
- D. 67
- E. 68

Correct Answer: CD

Section: (none)

Explanation

Explanation/Reference:

QUESTION 37

An administrator needs to create several virtual desktops to be contained in one desktop group that will be part of the XenDesktop farm and added to the XenServer infrastructure. The administrator decides to use the XenDesktop Setup Wizard.

Of the listed items, which four would the administrator need to know the names of in order to create the desktop group with multiple virtual desktops? (Choose four.)

- A. The vDisk that will be used
- B. The DNS server in the farm
- C. The desktop group that will be created
- D. The virtual desktops that will be created
- E. The virtual machine template that will be used
- F. The Provisioning Server on which the vDisk was created

Correct Answer: ACDE

Section: (none)

Explanation

Explanation/Reference:

QUESTION 38

A user is attempting to access a virtual desktop. Web Interface sent an .ICA file, but an ICA connection failed to establish.

Which component of the XenDesktop architecture has failed to communicate with the virtual desktop?

- A. Desktop Receiver
- B. Domain Controller
- C. Virtual Desktop Agent
- D. Desktop Delivery Controller

Correct Answer: A

Section: (none)

Explanation

Explanation/Reference:

QUESTION 39

Which issue can the Profile Management feature address in a XenDesktop implementation?

- A. Ability of users to switch between multiple profiles
- B. Profile bloat because extraneous files are copied to the profile
- C. Printing failure because printer properties are not updated at each logon
- D. Inability to connect to a virtual desktop because it is listed as Not Registered

Correct Answer: B

Section: (none)

Explanation

Explanation/Reference:

QUESTION 40

Which two .MSI files does an administrator need to install on user endpoint devices so that they work as domain-joined repurposed PCs? (Choose two.)

- A. UserProfileManager.MSI
- B. VirtualDesktopAgent.MSI
- C. DesktopReceiverFull.MSI
- D. DesktopApplianceLock.MSI

Correct Answer: CD

Section: (none)

Explanation

Explanation/Reference:

*

QUESTION 41

An administrator needs to implement a Provisioning Services image to multiple hardware types. Which type of image should the administrator use in this case?

- A. Private disk image
- B. Shared disk image
- C. Common disk image
- D. Difference Disk image

Correct Answer: D

Section: (none)

Explanation

Explanation/Reference:



<http://www.gratisexam.com/>

QUESTION 42

An administrator is creating a virtual machine (VM) for a XenDesktop environment and needs to specify a farm for the VM.

In which two places can the administrator specify the farm? (Choose two.)

- A. The properties of the desired farm
- B. The New VM wizard used to create the VM
- C. The Desktop Delivery Controller Farm GUID policy
- D. The installation process of the Virtual Desktop Agent

Correct Answer: CD

Section: (none)

Explanation

Explanation/Reference:

QUESTION 43

An administrator is in the process of creating an organizational unit (OU) using the Active Directory Configuration Wizard on one of the Desktop Delivery Controllers (DDCs).

The administrator can create the OU in _____ of the domains in the _____ that contains the DDCs. (Choose the correct option to complete the sentence.)

- A. any; farm
- B. any; forest
- C. at least two; farm
- D. at least two; forest

Correct Answer: B

Section: (none)

Explanation

Explanation/Reference:

QUESTION 44

An administrator noticed that a desktop in a pre-assigned desktop group is on, but NOT registered. What could the user have changed to cause this issue?

- A. The system locale
- B. The time zone of his desktop
- C. The system time in the desktop
- D. Their Microsoft Active Directory password

Correct Answer: C

Section: (none)

Explanation

Explanation/Reference:

QUESTION 45

An administrator used the Access Management Console to create a desktop group.

Of the given scenarios, which two would cause the desktop group to be disabled? (Choose two.)

- A. No idle virtual desktops are available
- B. No virtual desktops are defined in the desktop group
- C. All virtual desktops in the group are in maintenance mode
- D. No users have been granted access to the desktop group

Correct Answer: BD

Section: (none)

Explanation

Explanation/Reference:

QUESTION 46

An administrator is creating a virtual machine (VM) for a XenDesktop environment. The VM will run Microsoft Windows XP.

According to best practice, the minimum amount of memory required for this VM is _____ and the minimum amount of virtual disk space required is _____. (Choose the correct option to complete the sentence.)

- A. 1 GB; 8 GBs
- B. 8 GBs; 16 GBs
- C. 16 GBs; 64 GBs
- D. 512 MBs; 8 GBs

Correct Answer: D

Section: (none)

Explanation

Explanation/Reference:

QUESTION 47

After installing a Desktop Delivery Controller using the default configuration options, virtual desktops are unable to register successfully with the server.

Which two items should an administrator confirm in order to reach a resolution? (Choose two.)

- A. That Web Interface is running on the Desktop Delivery Controller
- B. The Desktop Delivery Controller is a member of the Controllers Security group
- C. The firewall on the Desktop Delivery Controller is configured to allow outgoing traffic on port 80
- D. The firewall on the Desktop Delivery Controller is configured to allow incoming traffic on port 8080

Correct Answer: BD

Section: (none)

Explanation

Explanation/Reference:

QUESTION 48

An administrator has installed Provisioning Services in a XenDesktop environment. DHCP and PXE are running on the same computer.

Which action should the administrator take to indicate that the DHCP server is also the PXE server?

- A. Enable domain management
- B. Verify that the TFTP service is running
- C. Add an option tag to the DHCP configuration
- D. Provide boot devices through the Manage Boot Devices Utility

Correct Answer: C

Section: (none)

Explanation

Explanation/Reference:

*

QUESTION 49

An administrator receives several calls from users stating that they cannot access any of the virtual desktops. The error message states:

The virtual desktop that you are trying to connect to is currently unavailable. Try reconnecting and, if the problem persists, contact your system administrator.

Which two items could cause this issue? (Choose two.)

- A. The desktop group has been disabled
- B. All desktops in the group are already in use
- C. The virtual machine computer Microsoft Active Directory accounts have not been created
- D. All virtual machines in the desktop group failed to register with the Desktop Delivery Controller

Correct Answer: BD

Section: (none)

Explanation

Explanation/Reference:

QUESTION 50

An administrator is creating a vDisk in a XenDesktop environment and wants to enable automatic vDisk updates.

Which two vDisk properties must the administrator configure in order for a newer vDisk to replace an older vDisk? (Choose two.)

- A. Date
- B. Type
- C. Class
- D. Description
- E. Serial number

Correct Answer: BC

Section: (none)

Explanation

Explanation/Reference:



<http://www.gratisexam.com/>