

**1Y0-201**

Number: 1Y0-201  
Passing Score: 800  
Time Limit: 120 min  
File Version: 1.0



<http://www.gratisexam.com/>

**1Y0-201**

**Managing Citrix XenDesktop 7.6 Solutions**

**Sections**

1. Managing a Citrix XenDesktop 7.6 Solution
2. Maintaining a Citrix XenDesktop 7.6 Solution
3. Monitoring a Citrix XenDesktop 7.6 Solution
4. Troubleshooting a Citrix XenDesktop 7.6 Solution

## Exam A

### QUESTION 1

Scenario: An application that renders locally and creates a large number of temporary files on the local drive is installed on the Desktop OS machines. A Citrix Administrator creates a vDisk in Private mode with this application installed. The administrator is in the process of updating a vDisk from Private mode to Standard mode and needs to determine the write cache type.

Which cache type would provide the best performance?

- A. Cache on server
- B. Cache on device hard drive
- C. Cache on device hard drive encrypted
- D. Cache in device RAM with overflow on hard disk

**Correct Answer: D**

**Section: Managing a Citrix XenDesktop 7.6 Solution**

**Explanation**

**Explanation/Reference:**

### QUESTION 2

Scenario: A user's Desktop OS machine with Personal vDisk (PvD) is unresponsive. The user needs to access applications installed on the PvD urgently, due to an important deadline.

How could a Citrix Administrator resolve this issue?

- A. Use Citrix Director to reset the PvD.
- B. Use Citrix Studio to restore the user's initial settings.
- C. Run the ctxpvd.exe command on the user's system.
- D. Run a PowerShell cmdlet to restore the user's PvD to a new virtual machine.

**Correct Answer: D**

**Section: Managing a Citrix XenDesktop 7.6 Solution**

**Explanation**

**Explanation/Reference:**

### QUESTION 3

Which policy must a Citrix Administrator modify on the NetScaler to allow mobile devices to connect to a XenDesktop environment where two-factor authentication is NOT used?

- A. LDAP
- B. Session
- C. Authentication
- D. Traffic Domain

**Correct Answer:** B

**Section:** Managing a Citrix XenDesktop 7.6 Solution

**Explanation**

**Explanation/Reference:**

#### QUESTION 4

Which session configuration on a NetScaler Gateway must a Citrix Administrator set to provide a secure connection to the servers running XenDesktop?



<http://www.gratisexam.com/>

- A. ICA Proxy On
- B. Clientless Access Off
- C. Default Authorization action
- D. Single Sign-On to web applications

**Correct Answer:** A

**Section:** Managing a Citrix XenDesktop 7.6 Solution

**Explanation**

**Explanation/Reference:**

#### QUESTION 5

Scenario: A company, OrgA, has an existing XenDesktop site and recently acquired another company, OrgB. OrgB also has an existing XenDesktop site and multiple thin clients deployed using the online plug-in. OrgA wants all employees to use the current OrgA StoreFront store. Which two changes in StoreFront must a

Citrix Administrator make to meet the requirements of the scenario? (Choose two.)

- A. Enable Remote Access.
- B. Export the Multi-store Provisioning file.
- C. Add the FQDN or IP address of the Delivery Controller in OrgB to the existing store.
- D. Create a new store using the FQDN or IP address of the Delivery Controllers in OrgA and OrgB.
- E. Go to the specific store on the StoreFront servers and enable the 'Configure XenApp for Services Support' feature.

**Correct Answer:** CE

**Section:** Managing a Citrix XenDesktop 7.6 Solution

**Explanation**

**Explanation/Reference:**

#### **QUESTION 6**

Scenario: A Citrix Administrator discovers that there has been a security breach that requires all users to change their password. However, users are NOT able to change their password through StoreFront. What should the administrator do to allow for password changes?

- A. Allow users to change passwords at any time.
- B. Allow users to change expired passwords only.
- C. Enable the password expired warning notification period.
- D. Enable the password change feature on the NetScaler Gateway.

**Correct Answer:** A

**Section:** Managing a Citrix XenDesktop 7.6 Solution

**Explanation**

**Explanation/Reference:**

#### **QUESTION 7**

What is true about users' access to Desktop OS machines when the XenDesktop SQL Server is offline?

- A. New users may start sessions.
- B. Only anonymous users may start new sessions.
- C. Users may only start a new session to Desktop OS machines.
- D. Users who have connected to their Desktop OS machine in the last 14 days are able to start sessions.

**Correct Answer:** D

**Section:** Managing a Citrix XenDesktop 7.6 Solution

**Explanation**

**Explanation/Reference:**

#### **QUESTION 8**

Scenario: Due to changes in the network infrastructure, the IP addresses of the Delivery Controllers will be changing. There are 2000 Desktop OS machines in the environment. What should a Citrix Administrator do to reduce the impact of the IP address changes on the environment?

- A. Update the beacons in StoreFront to reflect the updated IP addresses.
- B. Change the DNS entries for the Delivery Controllers to the new IP addresses.
- C. Run the Provisioning Services Configuration Wizard and update the IP addresses of the Delivery Controllers.
- D. Remove the Delivery Controller from the site, change the host file entries, and add the Delivery Controller back to the site.

**Correct Answer:** B

**Section:** Managing a Citrix XenDesktop 7.6 Solution

**Explanation**

**Explanation/Reference:**

#### **QUESTION 9**

Scenario: A Citrix Administrator uses Citrix Director to determine that user logon times have increased by two minutes in the last three months. The administrator wants to resolve this issue before the delay further impacts users. Which action could the administrator take to reduce the logon times?

- A. Configure Folder Redirection.
- B. Update Citrix Receiver on the endpoint.
- C. Increase RAM on the Desktop OS machine.
- D. Configure Citrix Profile Manager Active Writeback.

**Correct Answer:** A

**Section:** Managing a Citrix XenDesktop 7.6 Solution

**Explanation**

**Explanation/Reference:**

**QUESTION 10**

Scenario: XenDesktop has been implemented with Citrix Profile Manager enabled. Users are complaining that logging on takes a long time. A Citrix Administrator examines the user profile store and finds a number of profiles that have grown to over 500 MB.

Which profile management setting could the administrator configure to address the slow logon issues?

- A. Active Writeback
- B. Profile Streaming
- C. Registry Exclusion
- D. Cross Platform Settings

**Correct Answer: B**

**Section: Managing a Citrix XenDesktop 7.6 Solution**

**Explanation**

**Explanation/Reference:**

**QUESTION 11**

Scenario: A user reports that a CAD application is NOT launching in the assigned HDX 3D Pro Desktop OS machine. The user sees an error that indicates that a GPU could NOT be found. The host providing the Desktop OS machine for this user has the supported physical GPUs available. How could a Citrix Administrator ensure that a physical GPU is configured for the Desktop OS machine hosting the user's HDX 3D Pro Desktop?

- A. Enable the HDX 3D Pro policies for XenDesktop.
- B. Select the Lossless option in the Quality Control tool of the user's session.
- C. Create a new catalog in Citrix Studio for the HDX 3D Pro Desktop OS machines.
- D. Run the `xe vgpu-create vm-uuid=<uuid>` command in the XenServer command-line interface.

**Correct Answer: D**

**Section: Managing a Citrix XenDesktop 7.6 Solution**

**Explanation**

**Explanation/Reference:**

**QUESTION 12**

Scenario: Auto-created client printers are enabled within a XenDesktop deployment. A Citrix Administrator receives complaints from users of the Finance group who say they do NOT have the option to print to tray three on their default printer. The administrator decides to implement session printing for only the Finance users to resolve this issue.

Which two steps should the administrator take to meet the requirements of the scenario? (Choose two.)

- A. Enable legacy client printer names.
- B. Configure network printers on the client device.
- C. Disable automatic installation of in-box printer drivers.
- D. Install the printer drivers on the Desktop OS machine.
- E. Configure a session printer policy within Citrix policies.

**Correct Answer:** DE

**Section:** Managing a Citrix XenDesktop 7.6 Solution

**Explanation**

**Explanation/Reference:**

#### **QUESTION 13**

Scenario: A Citrix Administrator is managing a XenDesktop environment for a call center consisting of 2000 users. Users work three different shifts during the day. XenDesktop has been implemented so that each user gets access to a non-persistent Desktop OS machine provisioned using Provisioning Services. The Citrix Universal Print Server has been deployed to optimize printing in this environment. Corporate policy mandates that all users must print using the Universal Print Server. The administrator wants to deploy a new printer into the environment.

Which action should the administrator take to make the new printer driver available to the users in this environment?

- A. Install the printer driver on the Print Server.
- B. Install the printer driver onto the vDisk and deploy the updated vDisk.
- C. Install the printer driver on the Provisioning Services server with 'Enable printer management' selected in the vDisk properties.
- D. Install the printer driver on the Delivery Controller and use PowerShell cmdlets to replicate the drivers to all Desktop OS machines.

**Correct Answer:** A

**Section:** Managing a Citrix XenDesktop 7.6 Solution

**Explanation**

**Explanation/Reference:**

#### **QUESTION 14**

How could a Citrix Administrator add a XenApp 6.5 deployment to a XenDesktop 7.6 deployment so that both are manageable from within Citrix Director?

- A. Execute the DirectorConfig.exe tool on the Citrix Director server.
- B. Install a dedicated Citrix Director server for the XenApp 6.5 environment.

- C. Add the XenApp 6.5 Data Collector to the registry on the Citrix Director server.
- D. Add the name of the XenApp 6.5 Data Collector to service.AutoDiscoveryAddress in IIS.

**Correct Answer:** A

**Section:** Managing a Citrix XenDesktop 7.6 Solution

**Explanation**

**Explanation/Reference:**

#### **QUESTION 15**

Scenario: Users complain that it is taking significantly longer to see their Desktop OS machines compared to yesterday. The Helpdesk team is able to see active connections while the users are waiting. What could a Citrix Administrator view to compare the Desktop OS machine launch times?

- A. AAA logs in NetScaler Gateway
- B. Event log on the Citrix StoreFront server
- C. Logon duration details from Citrix Director
- D. Configuration logging report on Citrix Studio

**Correct Answer:** C

**Section:** Managing a Citrix XenDesktop 7.6 Solution

**Explanation**

**Explanation/Reference:**

#### **QUESTION 16**

Scenario: A Citrix Administrator is part of a team that manages a XenDesktop deployment that consists of 50 Desktop OS machines. One of the Delivery Controllers in the environment has crashed and is in an unrecoverable state.

Which tool must the administrator use to remove the crashed Delivery Controller from the XenDesktop Site?

- A. Citrix Studio
- B. Citrix Director
- C. Hypervisor tools
- D. Provisioning Services Console

**Correct Answer:** C

**Section:** Managing a Citrix XenDesktop 7.6 Solution

**Explanation**



**Explanation/Reference:**

**QUESTION 17**

Which report could a Citrix Administrator run to determine the number of users that have used Microsoft Visio in the last two months?



<http://www.gratisexam.com/>

- A. Logon Performance
- B. Concurrent Sessions
- C. Hosted Application Usage
- D. Failed Server OS Machines

**Correct Answer: D**

**Section: Managing a Citrix XenDesktop 7.6 Solution**

**Explanation**

**Explanation/Reference:**

**QUESTION 18**

Scenario: A Citrix Administrator needs to give an IT manager access to Citrix Studio to audit the infrastructure. The administrator wants to prevent the IT manager from editing configurations in Studio. Which administrator role should the administrator give the IT manager?

- A. Help Desk Administrator
- B. Read Only Administrator
- C. Delivery Group Administrator
- D. Machine Catalog Administrator

**Correct Answer: D**

**Section: Managing a Citrix XenDesktop 7.6 Solution**

**Explanation**

**Explanation/Reference:**

**QUESTION 19**

Scenario: A Citrix Administrator uses Machine Creation Services to manage XenDesktop 7.6 in an organization. One Delivery Group currently deploys 100 pooled-random Desktop OS machines. The administrator increased the number of Desktop OS machines in the machine catalog to 150. After increasing the number of machines, only 100 users are able to log in to the pooled-random Desktop OS machines.

Which additional step must the administrator take to ensure 150 users are able to log in simultaneously to 150 Desktop OS machines?

- A. Power on the newly added machines.
- B. Join the new machines to the domain.
- C. Add the new machines to the Delivery Group.
- D. Remove the new Desktop OS machines from maintenance mode.

**Correct Answer: C**

**Section: Managing a Citrix XenDesktop 7.6 Solution**

**Explanation**

**Explanation/Reference:**

**QUESTION 20**

Which three options could a Citrix Administrator enable for users who connect to their provisioned desktop from Smart phones and tablets to improve their experience? (Choose three.)

- A. Legacy Graphics Mode
- B. Remote the combo box
- C. Automatic keyboard display
- D. Enhanced Desktop Experience
- E. Launch touch-optimized desktop

**Correct Answer: BCE**

**Section: Managing a Citrix XenDesktop 7.6 Solution**

**Explanation**

**Explanation/Reference:**

**QUESTION 21**

A Citrix Administrator is in the process of upgrading the edition of XenDesktop to Enterprise. After uploading the new license file to the License Server, what must the administrator do to continue the upgrade?

- A. Run Imadmin.exe
- B. Restart the Delivery Controller
- C. Refresh the License Server Administration Console
- D. Change the edition of the license used within Citrix Studio

**Correct Answer:** D

**Section:** Managing a Citrix XenDesktop 7.6 Solution

**Explanation**

**Explanation/Reference:**

**QUESTION 22**

A Citrix Administrator is in the process of building new virtual machines using Machine Creation Services within a XenDesktop site.

How could the administrator ensure that all new virtual machines have the same individual settings for memory and CPU at the time the machines are built?

- A. Use a built-in hosting template.
- B. Create a custom template in the hosting environment.
- C. Create a master target device in the hosting infrastructure.
- D. Set the master device as a template in Provisioning Services.

**Correct Answer:** B

**Section:** Managing a Citrix XenDesktop 7.6 Solution

**Explanation**

**Explanation/Reference:**

**QUESTION 23**

Scenario: In a XenDesktop deployment, a Citrix Administrator must install an application that renders locally and creates a large number of temporary files on the local drive of Desktop OS machines. The administrator creates a vDisk in Private mode that contains the application. Now the administrator must change the vDisk mode from Private to Standard. The administrator must also determine the appropriate write cache type to configure.

Which cache type will likely result in system failures with a blue screen of death?

- A. Cache on server

- B. Cache in device RAM
- C. Cache on server persisted
- D. Cache in device RAM with overflow on hard disk

**Correct Answer:** B

**Section:** Managing a Citrix XenDesktop 7.6 Solution

**Explanation**

**Explanation/Reference:**

#### **QUESTION 24**

A Citrix Administrator is given the task of creating a new maintenance version for a vDisk from an existing maintenance disk. Which task does the administrator need to complete before the new maintenance version of the vDisk is created?

- A. Merge the vDisk.
- B. Promote the version.
- C. Release vDisk locks.
- D. Unassign the vDisk from selected devices.

**Correct Answer:** B

**Section:** Managing a Citrix XenDesktop 7.6 Solution

**Explanation**

**Explanation/Reference:**

#### **QUESTION 25**

Scenario: A Citrix Administrator implemented pooled-random Desktop OS machines with Personal vDisk for the executive staff. The CIO is concerned about the retention of his vDisk. Which tool should the administrator use to implement vDisk retention?

- A. ctxpvd.exe
- B. PowerShell
- C. Citrix Studio
- D. Citrix Director

**Correct Answer:** B

**Section:** Managing a Citrix XenDesktop 7.6 Solution

**Explanation**

**Explanation/Reference:**

**QUESTION 26**

Scenario: A Citrix Administrator at a medical facility needs to set up kiosks for non-corporate users to launch an application that utilizes internal authentication. The administrator needs to configure the site store.OrgA.com to allow this. How should the administrator configure the store to accomplish this requirement?

- A. Configure a new store as internal only with remote access.
- B. Add a VPN in Remote Access for store.OrgA.com to allow access.
- C. Configure the existing store as internal only with Remote Access set to None.
- D. Create an anonymous store using the Delivery Controllers belonging to OrgA.

**Correct Answer: D**

**Section: Managing a Citrix XenDesktop 7.6 Solution**

**Explanation**

**Explanation/Reference:**

**QUESTION 27**

What will continue to function while a XenDesktop site database is offline?

- A. Citrix Studio
- B. Citrix Director
- C. Anonymous Connections
- D. Existing user connections to Desktop OS machines

**Correct Answer: D**

**Section: Managing a Citrix XenDesktop 7.6 Solution**

**Explanation**

**Explanation/Reference:**

**QUESTION 28**

Scenario: A Citrix Administrator manages a XenDesktop environment with 2000 Desktop OS machines. The storage administrator has informed the Citrix Administrator that the name of the storage resources will be changing to meet the requirements of a naming scheme required by management. Which component of the XenDesktop environment will be impacted by the storage resource name change?

- A. Citrix Director
- B. Virtual Delivery Agent
- C. Provisioning Services
- D. Machine Creation Services

**Correct Answer: D**

**Section: Managing a Citrix XenDesktop 7.6 Solution**

**Explanation**

**Explanation/Reference:**

#### **QUESTION 29**

Scenario: A new Electronic Medical Records application has been deployed on XenDesktop. The application stores a user specific file in C:\Program Files\EMR\%username%. This file needs to be included in the user profile to provide a consistent user experience. Citrix Profile Manager is enabled. What could a Citrix Administrator do to add the file to the user profile?

- A. Configure a Citrix policy with Active Writeback.
- B. Apply a policy in Citrix Studio with file inclusion.
- C. Add the EMR folder to the mandatory profile location.
- D. Use Microsoft Folder Redirection to include the EMR folder.

**Correct Answer: B**

**Section: Managing a Citrix XenDesktop 7.6 Solution**

**Explanation**

**Explanation/Reference:**

#### **QUESTION 30**

Scenario: A Citrix Administrator discovers that some user profiles have grown to over 500 MB in size. The administrator wants to reduce the size of user profiles. Which method could the administrator use to reduce the size of future user profiles without incurring data loss?

- A. Enable file exclusions in a Citrix policy.
- B. Disable folder redirection Application Data.
- C. Enable profile streaming for the user profile.
- D. Disable 'delete locally cached profiles on logoff'.

**Correct Answer:** A

**Section:** Managing a Citrix XenDesktop 7.6 Solution

**Explanation**

**Explanation/Reference:**

### **QUESTION 31**

Scenario: A Citrix Administrator who works for a hospital receives a request to set the display quality settings to the maximum possible quality for reviewing MRI scans. The hospital is using HDX 3D Pro within a XenDesktop 7.6 deployment.

What should the administrator do to enhance the display quality as required in the scenario?

- A. Enable the Lossless policy
- B. Enable the HDX3DPro Quality Settings policy
- C. Apply the CLI command `xe vgpu-create vm-uuid=<uuid>`
- D. Create a new catalog for the HDX 3D Pro Desktop OS machines

**Correct Answer:** A

**Section:** Managing a Citrix XenDesktop 7.6 Solution

**Explanation**

**Explanation/Reference:**

### **QUESTION 32**

Scenario: An organization has headquarters based in London and has branch offices in New York and Beijing. Citrix XenDesktop was recently implemented in the environment. All Desktop OS machines are located within the London Datacenter while print servers are located in each branch office. Users have been complaining that printing from the branch offices is slow. All branches are connected through a Wide Area Network (WAN). QoS has been implemented for all ICA/HDX traffic. How could a Citrix Administrator optimize the printing performance for branch office users without asking for additional investments from management?

- A. Disable client auto-created printers.
- B. Disable direct connections to the print server.
- C. Increase the WAN link speed to the branch offices.
- D. Adjust printing bandwidth as part of the overall user session bandwidth limit.

**Correct Answer:** B

**Section:** Managing a Citrix XenDesktop 7.6 Solution

**Explanation**

**Explanation/Reference:**

**QUESTION 33**

Scenario: A Citrix Administrator manages a XenDesktop site that consists of two Delivery Controllers. The Helpdesk team uses Citrix Director to perform support and monitoring tasks within the environment. A second XenDesktop site with two Delivery Controllers also exists in the environment. How could the administrator integrate the first and second sites so that the Helpdesk team can support both sites from one Director Console?



<http://www.gratisexam.com/>

- A. Run PowerShell for Citrix Director on the Delivery Controller.
- B. Add a load balancing vServer on the NetScaler and add all four Delivery Controllers to it.
- C. Add the new Delivery Controllers to the List of Delivery Controllers using Citrix StoreFront.
- D. Add the FQDN of the new Delivery Controller servers in the second site on the servers hosting Citrix Director in the first site.

**Correct Answer: D**

**Section: Managing a Citrix XenDesktop 7.6 Solution**

**Explanation**

**Explanation/Reference:**

**QUESTION 34**

What should a Citrix Administrator do to ensure that a vDisk is properly load balanced across multiple Provisioning Services servers in an environment where the Streaming Service is working properly?

- A. Go to the vDisk properties to ensure that load balancing is set.
- B. Rebalance the target devices across the Provisioning Services servers.
- C. Create a separate store and assign servers from different sites to load balance the vDisk.
- D. Check the association of the servers to a site to ensure all servers are configured to separate sites.

**Correct Answer: A**

**Section: Maintaining a Citrix XenDesktop 7.6 Solution**



## Explanation

### Explanation/Reference:

#### QUESTION 35

Scenario: A Citrix Administrator recently created and deployed a new vDisk to all Desktop OS machines. The morning after making that change, users are unable to launch their Desktop OS machines. The administrator finds that the Desktop OS machines associated with the new vDisk are shut down and in maintenance mode. How could the administrator resolve this issue?

- A. Disable Maintenance mode on the device collection.
- B. Select 'Enable Active Directory machine account password management' on the vDisk.
- C. Create Desktop OS machine Active Directory accounts manually and restart all the machines.
- D. Disable the machine account password changes policy through the GPO in the organizational unit where the target devices are located.

**Correct Answer: B**

**Section: Maintaining a Citrix XenDesktop 7.6 Solution**

## Explanation

### Explanation/Reference:

#### QUESTION 36

Scenario: A Citrix Administrator used the versioning feature of Provisioning Services to test changes made to a vDisk. After a successful test, the version is promoted. All users are using the latest production version. Over time, additional versions of the vDisk are created. To conserve space, the administrator decides to merge all of the versions to a new base version but the Merge option appears grayed out. Why does the Merge option appear grayed out?

- A. Merging within the Provisioning Service console is only possible for an individual vDisk version.
- B. The vDisk was NOT created with the latest version of the Provisioning Services target device software.
- C. The administrator needs to promote the existing Maintenance Version to Test or Production, after that the Merge option becomes available.
- D. The last production version of the vDisk is locked and used by the Target Devices. After all locks are removed, the Merge option becomes available.

**Correct Answer: C**

**Section: Maintaining a Citrix XenDesktop 7.6 Solution**

## Explanation

### Explanation/Reference:

**QUESTION 37**

Scenario: A Citrix Administrator uses Provisioning Services to deploy a Windows 7 image in Standard mode. After updating the hosting infrastructure to the latest version, the XenServer tools within the vDisk need to be updated.

Which method could the administrator use to update the XenServer tools?

- A. Reverse the image and install tools.
- B. Clone the master target device and install tools.
- C. Place the vDisk in Private image mode and install tools.
- D. Enable maintenance mode on the Delivery Group and install tools.

**Correct Answer:** A

**Section:** Maintaining a Citrix XenDesktop 7.6 Solution

**Explanation**

**Explanation/Reference:**

**QUESTION 38**

A Citrix Administrator needs to configure email alerts on performance threshold events for a XenServer resource pool.

Which three types of XenServer alerts could the administrator set in XenCenter? (Choose three.)

- A. Disk usage
- B. CPU usage
- C. Memory usage
- D. Network usage
- E. Storage I/O usage

**Correct Answer:** BCD

**Section:** Maintaining a Citrix XenDesktop 7.6 Solution

**Explanation**

**Explanation/Reference:**

**QUESTION 39**

Scenario: A Citrix Administrator uses Machine Creation Services to provision Desktop OS machines in an environment. The administrator needs to update an application that is locally installed on the Desktop OS machines.

Which action should the administrator take after updating the application to ensure that users are provided with the updated application?

- A. Update the master image, then update the Delivery Group.
- B. Update the session machine catalog, then update the Delivery Group.
- C. Update the master image, then update the appropriate session machine catalog.
- D. Update the Desktop OS machines, then update the appropriate session machine catalog.

**Correct Answer: C**

**Section: Maintaining a Citrix XenDesktop 7.6 Solution**

**Explanation**

**Explanation/Reference:**

#### **QUESTION 40**

Scenario: A Citrix Administrator is in the process of creating a new session machine catalog. On the 'Machine Management' page, 'Machine Creation Services (MCS)' is grayed out. What should the administrator do to enable this option for selection?

- A. Restart the Delivery Controller.
- B. Add a new resource connection.
- C. Use the New-BrokerCatalog PowerShell cmdlet.
- D. Install the 'Machine Creation Service Extension' on each Delivery Controller.

**Correct Answer: B**

**Section: Maintaining a Citrix XenDesktop 7.6 Solution**

**Explanation**

**Explanation/Reference:**

#### **QUESTION 41**

Scenario: A Citrix Administrator initially set up Finance users with Desktop OS machines which are set to suspend during off-peak hours. Now, the administrator needs to change this setting to shut down the Desktop OS machines to free host resources. Which PowerShell cmdlet should the administrator use to change the existing setting?

- A. Set-BrokerCatalog
- B. Set-BrokerMachine
- C. Set-BrokerDesktop
- D. Set-BrokerDesktopGroup

**Correct Answer: D**

**Section: Maintaining a Citrix XenDesktop 7.6 Solution**

**Explanation**

**Explanation/Reference:**

**QUESTION 42**

Scenario: XenDesktop is being used in an environment to deliver App-V applications to users. A Citrix Administrator deploys a new App-V package to the App-V Publishing Server. The App-V package must be delivered to a specific group of users through Citrix Studio. The administrator selects an existing Delivery Group in Citrix Studio and uses the 'Add Applications' option. The list of installed applications on the master image does NOT display the newly created App-V application. What should the administrator do to resolve this issue?

- A. Install the Citrix Connector for Microsoft System Center Configuration Manager and import all App-V Applications from SCCM.
- B. Verify that the App-V publishing settings are correct, run the task 'Refresh App-V Application,' and re- run the 'Add Applications' task.
- C. Create a new Delivery Group, use 'Applications' as Delivery Type and select the option 'Enable App-V Applications' within the wizard.
- D. Specify the AppV Publishing Server through a GPO and apply this GPO to all servers within this Delivery Group. After the GPO is applied, re-run the 'Add-Applications' task.

**Correct Answer: B**

**Section: Maintaining a Citrix XenDesktop 7.6 Solution**

**Explanation**

**Explanation/Reference:**

**QUESTION 43**

What should a Citrix Administrator create before configuring Power Management for a desktop group?

- A. A policy
- B. A hosting connection
- C. An Administrator with the Host Administrator role
- D. An Administrator with the Machine Catalog Administrator role

**Correct Answer: B**

**Section: Maintaining a Citrix XenDesktop 7.6 Solution**

**Explanation**

**Explanation/Reference:**

**QUESTION 44**

A Citrix Administrator needs to update a master image to deliver an updated application to Desktop OS machines. Which steps should the administrator take next to complete the update of the Desktop OS machines?

- A. Update the master image, then update the Delivery Group.
- B. Update a Desktop OS machine, then update the Delivery Group.
- C. Update the master image, then update the session machine catalog.
- D. Update a Desktop OS machine, then update the session machine catalog.

**Correct Answer:** C

**Section:** Maintaining a Citrix XenDesktop 7.6 Solution

**Explanation**

**Explanation/Reference:**

**QUESTION 45**

Scenario: A Citrix Administrator manages a XenDesktop environment where Machine Creation Services is used to create and deploy Server and Desktop OS machines. After an application update on the master image for the Desktop OS machines, users report functionality issues with their Desktop OS machines. What should the administrator do to resolve the reported issue?

- A. Reset user profiles using Citrix Director.
- B. Select 'Revert to' in the Snapshots menu in XenServer.
- C. Restart the Desktop OS machines using Citrix Director.
- D. Use the 'Rollback Machine Update' option in Citrix Studio.

**Correct Answer:** D

**Section:** Maintaining a Citrix XenDesktop 7.6 Solution

**Explanation**

**Explanation/Reference:**

**QUESTION 46**

Scenario: A Citrix Administrator needs to temporarily stop connections to all machines belonging to the Finance Applications Delivery Group. Which step should the administrator take to ensure that NO new connections are possible to this Delivery Group while performing maintenance?



<http://www.gratisexam.com/>

- A. Use the PowerShell cmdlet: Set-BrokerAccessPolicyRule.
- B. Shut down all affected machines within the XenServer console.
- C. Select the Delivery Group and use the 'Turn On Maintenance Mode' option.
- D. Enable Maintenance Mode on a XenServer that hosts 'Financial Applications'.

**Correct Answer:** B

**Section:** Maintaining a Citrix XenDesktop 7.6 Solution

**Explanation**

**Explanation/Reference:**

#### **QUESTION 47**

Scenario: Users report slow application launch times after a master image update. These users have critical deadlines and need access to their machines as soon as possible. How should a Citrix Administrator resolve the slow application launch times?

- A. Revert to the previous image.
- B. Reset user profiles using Citrix Director.
- C. Restart the impacted Desktop OS machines.
- D. Migrate the Desktop OS machines to a different host.

**Correct Answer:** D

**Section:** Maintaining a Citrix XenDesktop 7.6 Solution

**Explanation**

**Explanation/Reference:**

#### **QUESTION 48**

Scenario: A user receives the following error when attempting to log in to a Desktop OS machine:

The desktop "Finance1" is temporarily unavailable due to planned maintenance. A Citrix Administrator verified that the Finance1 Delivery Group is NOT in maintenance mode, and no other users report virtual machine issues from the same Delivery Group. How could the administrator resolve this issue?

- A. Restart the Desktop OS machine.
- B. Turn off the maintenance mode on the specific Desktop OS machine.
- C. Turn off maintenance mode on the XenServer hosting the user's Desktop OS machine.
- D. Shutdown the user's Desktop OS machine and provision a new Desktop OS machine for the specific user.

**Correct Answer:** B

**Section:** Maintaining a Citrix XenDesktop 7.6 Solution

**Explanation**

**Explanation/Reference:**

#### **QUESTION 49**

Scenario: A Citrix Administrator needs to reduce power consumption during off-peak hours. With the current configuration, the Desktop OS machines will remain powered-on when users disconnect at the end of the workday.

How could the administrator reduce power consumption during off-peak hours?

- A. Use the PowerShell cmdlet: Set-BrokerDesktopGroup.
- B. Set the Reboot Schedule policy from within Citrix Studio.
- C. Create a shutdown scheduled task on the Desktop OS machines.
- D. Configure Power Management settings in an Active Directory Group Policy.

**Correct Answer:** A

**Section:** Maintaining a Citrix XenDesktop 7.6 Solution

**Explanation**

**Explanation/Reference:**

#### **QUESTION 50**

Scenario: Employees in an organization work two separate shifts and use pooled-random Desktop OS machines. When employees working at night end their shift, they disconnect from their Desktop OS machines. When employees working the day shift log on, their Desktop OS machines are NOT available. What could a Citrix Administrator do to resolve this issue?

- A. Configure the 'Reboot Schedule' in Citrix policies.

- B. Set 'When Disconnected' to Suspend during peak hours.
- C. Set 'When Disconnected' to Shutdown during peak hours.
- D. Adjust Power Management settings in the Active Directory Group Policy.

**Correct Answer: C**

**Section: Maintaining a Citrix XenDesktop 7.6 Solution**

**Explanation**

**Explanation/Reference:**

#### **QUESTION 51**

After installing Firefox and Adobe Reader on the master target device and updating the vDisk, users report the new applications are NOT visible. What should a Citrix Administrator do to resolve this issue?

- A. Set the vDisk mode to 'Production.'
- B. Merge existing vDisks with the base version.
- C. Revert the vDisk target to the previous version.
- D. Select 'Update Machines' on the Machine Catalog.

**Correct Answer: A**

**Section: Maintaining a Citrix XenDesktop 7.6 Solution**

**Explanation**

**Explanation/Reference:**

#### **QUESTION 52**

Scenario: A Citrix Administrator manages a XenDesktop environment where Provisioning Services is used to create and deploy Server and Desktop OS machines. The administrator needs to update the vDisk assigned to Desktop OS machines with a new version of an application. What must the administrator do to initiate the update?

- A. Merge the vDisk versions in the Provisioning Services Console.
- B. Create a new vDisk version in the Provisioning Services Console.
- C. Select 'Update Machines' on the Machine Catalog in Citrix Studio.
- D. Select the Device Collection and restart the target device in the Provisioning Services Console.

**Correct Answer: B**

**Section: Maintaining a Citrix XenDesktop 7.6 Solution**



## Explanation

### Explanation/Reference:

#### QUESTION 53

A Citrix Administrator could export Configuration Logging data from Citrix Studio in \_\_\_\_\_ and \_\_\_\_\_ file formats? (Choose the two correct options to complete this sentence.)

- A. .XLS
- B. .XML
- C. .PDF
- D. .CSV
- E. .HTML

**Correct Answer:** DE

**Section:** Monitoring a Citrix XenDesktop 7.6 Solution

## Explanation

### Explanation/Reference:

#### QUESTION 54

A Citrix Administrator returns from vacation to find that during peak logon times, users are experiencing extremely slow login times, with the typical login taking over 120 seconds. How should the administrator generate the information needed to determine the changes that have led to this issue?

- A. Launch the Create Custom Report wizard from Citrix Studio.
- B. Run a custom report for the Delivery Group from Citrix Studio.
- C. Go to the C:\XDLogs and print the log file on the Delivery Controller.
- D. Create a custom view and print the results from the Delivery Controller.

**Correct Answer:** A

**Section:** Monitoring a Citrix XenDesktop 7.6 Solution

## Explanation

### Explanation/Reference:

#### QUESTION 55

Scenario: A Citrix Administrator is informed of latency at a branch office. Users report they are experiencing slow mouse and keyboard responses, as well as slow screen refreshes, while working within their Desktop OS machines. Users at the branch office access their Desktop OS machines through the NetScaler Gateway. Which tool could the administrator use to monitor the user experience at the remote office?

- A. Citrix Scout
- B. Citrix Studio
- C. Citrix Director
- D. Citrix Command Center

**Correct Answer: C**

**Section: Monitoring a Citrix XenDesktop 7.6 Solution**

**Explanation**

**Explanation/Reference:**

#### **QUESTION 56**

Scenario: A Citrix Administrator needs to set up an alert on a service that is important for Desktop OS machine performance. The infrastructure includes 3000 Desktop OS machines and two Provisioning Services servers.

Which service on the Provisioning Services server should the administrator monitor?

- A. TFTP
- B. BootP
- C. Stream
- D. Two-Stage Boot

**Correct Answer: C**

**Section: Monitoring a Citrix XenDesktop 7.6 Solution**

**Explanation**

**Explanation/Reference:**

#### **QUESTION 57**

Which tool could a Citrix Administrator use to generate a graphical performance report of memory for the last two quarters?

- A. XenCenter
- B. Citrix Studio
- C. Citrix Director

- D. XenServer tools
- E. Provisioning Services Console

**Correct Answer:** A

**Section:** Monitoring a Citrix XenDesktop 7.6 Solution

**Explanation**

**Explanation/Reference:**

#### **QUESTION 58**

Scenario: A line of business application has been deployed as a hosted server application in XenDesktop. The deadline for a critical project is quickly approaching. Users report that the application is slower than usual. The Server OS machines are non-persistent. Where should a Citrix Administrator gather information to resolve the performance issue?

- A. Citrix Studio
- B. Citrix Director
- C. Provisioning Services vDisk statistics
- D. Performance Monitor on the Delivery Controller

**Correct Answer:** B

**Section:** Monitoring a Citrix XenDesktop 7.6 Solution

**Explanation**

**Explanation/Reference:**

#### **QUESTION 59**

Scenario: A Citrix Administrator performed maintenance activities in a XenDesktop environment. The next day, a second Citrix Administrator discovers that server-hosted applications are missing from Citrix Receiver. Where could the second administrator go to determine the cause of this issue?

- A. Citrix Director
- B. StoreFront store
- C. Configuration Logging
- D. Delivery Controller Windows Event logs

**Correct Answer:** C

**Section:** Monitoring a Citrix XenDesktop 7.6 Solution

## **Explanation**

### **Explanation/Reference:**

#### **QUESTION 60**

Scenario: A Citrix Administrator manages a XenDesktop site for a Call Center consisting of 2000 Desktop OS machines. Many users are unable to log on to the Desktop OS machines. The administrator suspects there is an issue with the Desktop OS machines that is impacting the user's ability to log on. Where should the administrator look to gather information about this issue?

- A. HDX Insight in Citrix Director
- B. Logging node of Citrix Studio
- C. Citrix Director on the Failed Desktop OS machines node
- D. The Provisioning Services Console on the Device Collection node

**Correct Answer: C**

**Section: Monitoring a Citrix XenDesktop 7.6 Solution**

## **Explanation**

### **Explanation/Reference:**

#### **QUESTION 61**

Scenario: Users in an environment access hosted applications from thin clients connected to overhead projectors. Some of these users have complained about delays and interruptions in the video playing when viewing videos that require Adobe Flash player. Where could a Citrix Administrator gather information to resolve this issue?

- A. Logging node in Citrix Studio
- B. Session Detail in Citrix Director
- C. Activity Manager in Citrix Director
- D. Event logs on the Delivery Controller

**Correct Answer: B**

**Section: Monitoring a Citrix XenDesktop 7.6 Solution**

## **Explanation**

### **Explanation/Reference:**

#### **QUESTION 62**

Where in Citrix Director could a Citrix Administrator validate that Flash Redirection is enabled?

- A. User Details
- B. Activity Monitor
- C. The Network tab
- D. The Sessions tab

**Correct Answer:** A

**Section:** Monitoring a Citrix XenDesktop 7.6 Solution

**Explanation**

**Explanation/Reference:**

#### **QUESTION 63**

Where in Citrix Director could a Citrix Administrator monitor slow performing applications?



<http://www.gratisexam.com/>

- A. Dashboard
- B. Sessions tab
- C. User session details
- D. Logon performance tab

**Correct Answer:** C

**Section:** Monitoring a Citrix XenDesktop 7.6 Solution

**Explanation**

**Explanation/Reference:**

#### **QUESTION 64**

What should a Citrix Administrator do to restart a machine from Citrix Director after a user or machine name has been found?

- A. From the dashboard, select the session and restart the machine.
- B. On the User Details or Machine Details pages, select 'Power Control'.
- C. On the User Details or Machine Details pages, select 'Session Control'.
- D. From the dashboard, filter all connections, click on 'Maintenance Mode' and select 'Turn off'.

**Correct Answer:** B

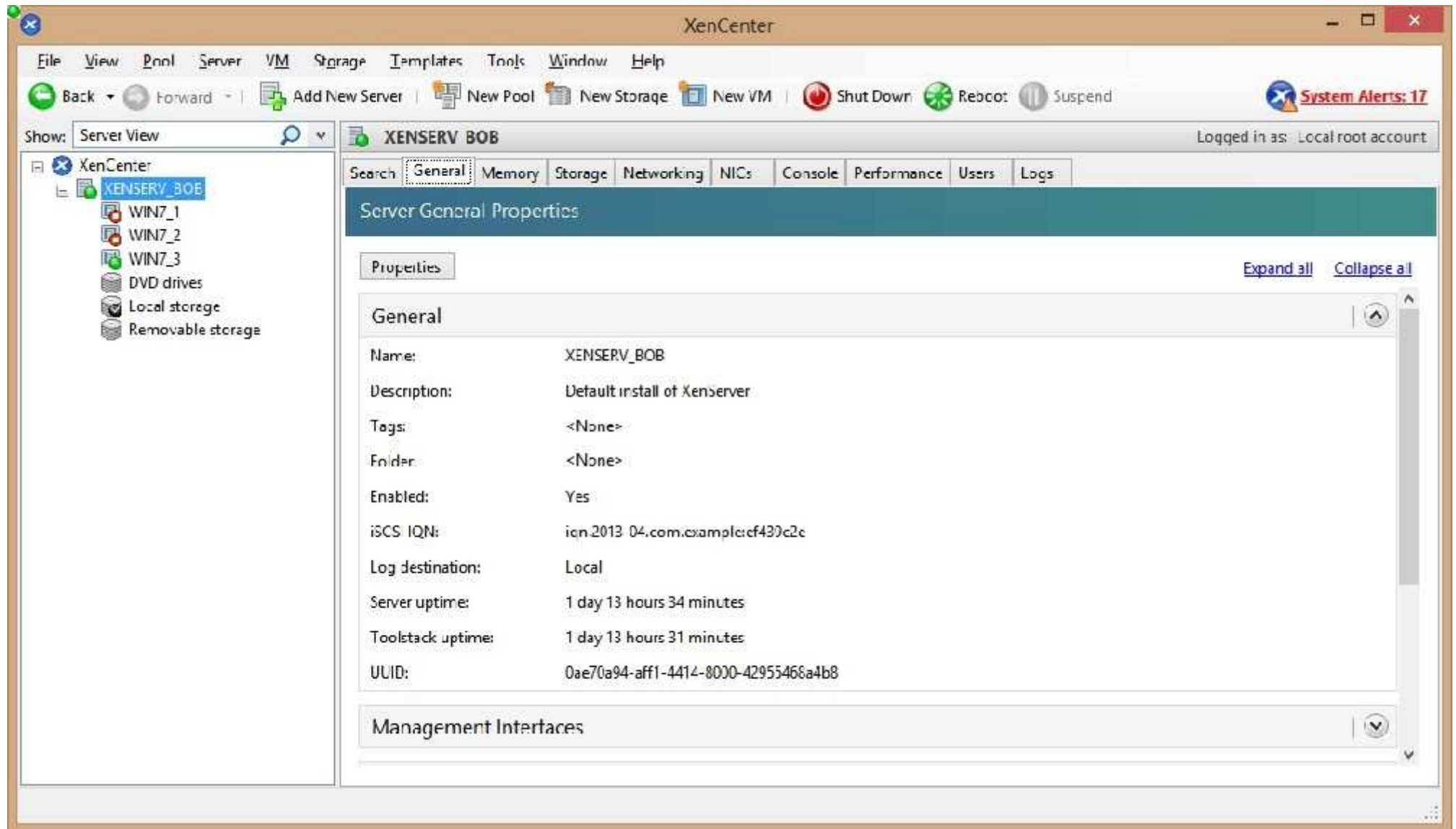
**Section:** Monitoring a Citrix XenDesktop 7.6 Solution

**Explanation**

**Explanation/Reference:**

**QUESTION 65**

A Citrix Administrator discovers that several virtual desktops in Citrix Studio are unregistered. Click the Exhibit button to view a screenshot of the XenCenter Console.



Based on the information in the screenshot, why are the virtual desktops unregistered?

- A. XenServer is NOT a pool member.
- B. XenServer is in maintenance mode.
- C. The virtual machines are NOT running.
- D. The virtual machines have been suspended.

**Correct Answer: B**

**Section: Monitoring a Citrix XenDesktop 7.6 Solution**

**Explanation**

**Explanation/Reference:**

**QUESTION 66**

Scenario: Users of the Finance group lost access to their local drive through their desktop-hosted applications. Due to this issue, those users missed a critical deadline. Now management has requested that a Citrix Administrator provide a report of recent changes to the environment. Which tool could the administrator use to generate a report of recent changes to the environment?

- A. Event logs
- B. StoreFront
- C. Citrix Studio
- D. Citrix Director

**Correct Answer: C**

**Section: Monitoring a Citrix XenDesktop 7.6 Solution**

**Explanation**

**Explanation/Reference:**

**QUESTION 67**

Scenario: A Citrix Administrator needs to audit logins from the NetScaler Gateway. Company policy states that the logs need to be sent to a centralized server. What should the administrator configure to audit ICA sessions on the NetScaler Gateway?

- A. SYSLOG
- B. HDX Monitoring
- C. Application Firewall
- D. Configuration Logging
- E. NetScaler Web Logging



**Correct Answer:** A

**Section:** Monitoring a Citrix XenDesktop 7.6 Solution

**Explanation**

**Explanation/Reference:**

**QUESTION 68**

A Citrix Administrator has received several reports of network connectivity issues throughout the day and thinks these issues might be affecting the vDisk assigned to Desktop OS machines. What should the administrator monitor to determine if the network issues have affected disk streaming?

- A. NetStat Utility
- B. Error messages in Citrix Studio
- C. The number of warning messages in Citrix Director
- D. The number of retries performed by the Streaming service

**Correct Answer:** D

**Section:** Monitoring a Citrix XenDesktop 7.6 Solution

**Explanation**

**Explanation/Reference:**

**QUESTION 69**

A Citrix Administrator monitoring virtual machine network performance is unable to see memory utilization data in XenCenter. Why is the administrator unable to monitor memory utilization data?

- A. SR-IOV is NOT configured.
- B. Performance monitor service is NOT running.
- C. XenServer tools are NOT installed on the virtual machines.
- D. Additional administrative rights are required to monitor memory utilization.

**Correct Answer:** C

**Section:** Monitoring a Citrix XenDesktop 7.6 Solution

**Explanation**

**Explanation/Reference:**

**QUESTION 70**

Scenario: A Citrix Administrator created a new Delivery Group named 'Sales' and assigned Desktop OS machines to users who are members of the Delivery Group. The Server OS machines assigned to the Delivery Group are based on Windows Server 2012 R2.

Where should the administrator look to identify the number of active sessions to Server OS machines assigned to the 'Sales' Delivery Group?

- A. Filter in Citrix Studio
- B. Event Log on the StoreFront server
- C. Event Log on the Delivery Controller server
- D. Filter by collection in the Provisioning Services Console

**Correct Answer:** A

**Section:** Monitoring a Citrix XenDesktop 7.6 Solution

**Explanation**

**Explanation/Reference:**

**QUESTION 71**

Scenario: When a Citrix Administrator attempts to shadow a user connected to a Desktop OS machine, the following error is displayed:

Failed to initiate Remote Assistance

What could be the cause of this issue?

- A. Remote Assistance is NOT enabled on the host machine.
- B. The administrator created a firewall exception for port 3398.
- C. The administrator added Citrix Director to the Intranet Zone trusted sites.
- D. The administrator does NOT have the proper scope for the user's Desktop OS machine.

**Correct Answer:** A

**Section:** Monitoring a Citrix XenDesktop 7.6 Solution

**Explanation**

**Explanation/Reference:**

**QUESTION 72**

A Citrix Administrator deployed a new version of Citrix Receiver to users. Which two tools could the administrator use to determine if connected users are using the new version? (Choose two.)

- A. Citrix Studio
- B. Citrix Director
- C. Desktop Log files
- D. StoreFront Console

**Correct Answer:** AB

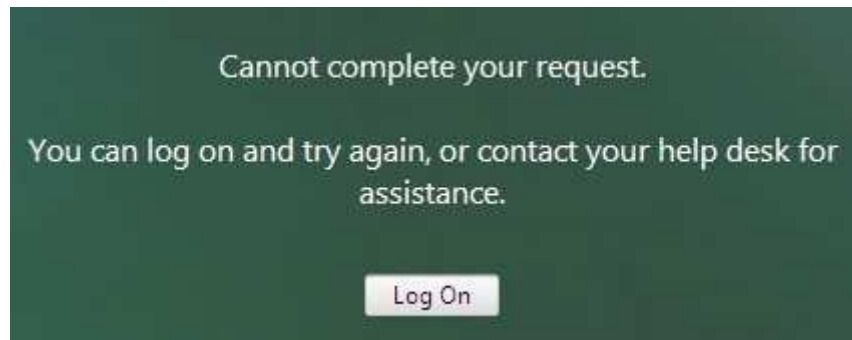
**Section:** Monitoring a Citrix XenDesktop 7.6 Solution

**Explanation**

**Explanation/Reference:**

### QUESTION 73

Scenario: When accessing Citrix Receiver for Web on the StoreFront through NetScaler Gateway, a user receives an error. Click on the Exhibit button to view the error.



Users NOT connecting through NetScaler Gateway are successful. What is the likely cause of this error?

- A. The callback URL configured on StoreFront is incorrect.
- B. The NetScaler Gateway CANNOT resolve the StoreFront FQDN.
- C. The StoreFront server CANNOT resolve the Delivery Controller FQDN.
- D. The 'User name and password' authentication method is NOT enabled on the StoreFront server.

**Correct Answer:** A

**Section:** Troubleshooting a Citrix XenDesktop 7.6 Solution

**Explanation**

**Explanation/Reference:**

**QUESTION 74**

Scenario: A user receives the following error when launching a Desktop OS machine through NetScaler Gateway: 'Error could not connect to Application.'

What should a Citrix Administrator temporarily disable to analyze this error?

- A. Session Reliability
- B. Authorization policy
- C. Authentication policy
- D. Secure Ticket Authority

**Correct Answer: A**

**Section: Troubleshooting a Citrix XenDesktop 7.6 Solution**

**Explanation**

**Explanation/Reference:**

**QUESTION 75**

Scenario: A Citrix Administrator configured Profile Management using Citrix policies. The administrator enabled the policies and set the order of priority. The administrator later discovered that when users log in, their profile settings are NOT being saved for future sessions. In which two ways could the administrator refresh policies on the Server and Desktop OS machines? (Choose two.)

- A. Restart all Server and Desktop OS machines.
- B. Run rsop.msc from the command-line interface.
- C. Disable the Windows Firewall on the Delivery Controller.
- D. Change priority of the Management Policy in Citrix Studio.
- E. Run gpupdate /force from the command-line interface on all Server and Desktop OS machines.

**Correct Answer: AE**

**Section: Troubleshooting a Citrix XenDesktop 7.6 Solution**

**Explanation**

**Explanation/Reference:**

**QUESTION 76**

A user is unable to log on to the StoreFront store through Citrix Receiver. Where should a Citrix Administrator go to enable logging to troubleshoot this issue?



<http://www.gratisexam.com/>

- A. Citrix Studio
- B. Citrix Director
- C. StoreFront Management Console
- D. Registry Editor on the StoreFront server

**Correct Answer:** D

**Section:** Troubleshooting a Citrix XenDesktop 7.6 Solution

**Explanation**

**Explanation/Reference:**

**QUESTION 77**

Scenario: When remote users attempt to log on through NetScaler Gateway, they are presented with the following error message:

'Cannot Complete your Request.'

When the same users are in the office, they are able to log on successfully. What should a Citrix Administrator change to resolve this issue?

- A. The Callback URL to match the external URL of the NetScaler Gateway.
- B. The NetScaler Gateway Authentication method to 'Enable Pass-through'.
- C. The StoreFront URL to match the external URL of the NetScaler Gateway.
- D. The External Beacon address to match the external URL of the NetScaler Gateway.

**Correct Answer:** A

**Section:** Troubleshooting a Citrix XenDesktop 7.6 Solution

**Explanation**

**Explanation/Reference:**

**QUESTION 78**

In which node within Citrix Studio could a Citrix Administrator modify the operating system type for Machine Creation Services?

- A. Hosting
- B. Policies
- C. Controllers
- D. Machine Catalogs

**Correct Answer:** D

**Section:** Troubleshooting a Citrix XenDesktop 7.6 Solution

**Explanation**

**Explanation/Reference:**

**QUESTION 79**

A Citrix Administrator needs to obtain logs from Machine Creation Services. Which .config file should the administrator manually modify to enable logging?

- A. BrokerService.exe.Config
- B. Citrix.Configuration.SdkWcfEndpoint.exe.Config
- C. Citrix.MachineIdentity.SdkWcfEndpoint.exe.Config
- D. Citrix.MachineCreation.SdkWcfEndpoint.exe.Config

**Correct Answer:** D

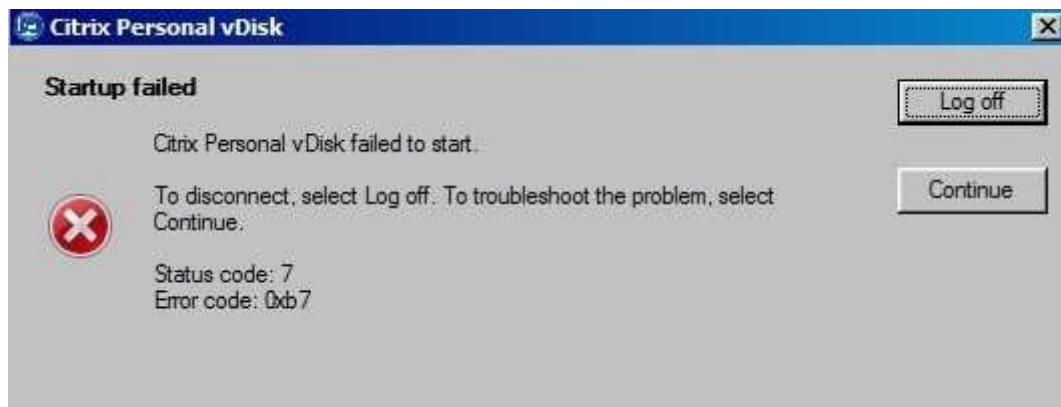
**Section:** Troubleshooting a Citrix XenDesktop 7.6 Solution

**Explanation**

**Explanation/Reference:**

**QUESTION 80**

Scenario: A Citrix Administrator created a Device Collection and a Delivery Group for the Human Resources (HR) and Accounting user groups. The administrator used the XenDesktop Setup Wizard to create the Desktop OS machines and assigned the V: drive as their personal drives. While testing all the new configurations prior to rolling out the Desktop OS machines to the HR user group, the administrator receives an error when attempting to access the V: drive. Users from the Accounting user group do NOT receive the error. Click on the Exhibit button to view the error.



How could the administrator resolve this issue?

- A. Change the V: drive to another drive letter.
- B. Run the inventory update on the master image and release the image to the HR user group.
- C. Recreate the master image with Personal vDisk and release that image to the HR user group.
- D. Delete all of the Desktop OS machines and rerun the Streamed VM Setup Wizard to recreate the Desktop OS machines.

**Correct Answer:** A

**Section:** Troubleshooting a Citrix XenDesktop 7.6 Solution

**Explanation**

**Explanation/Reference:**

#### **QUESTION 81**

Scenario: An employee attempts to log in to a Desktop OS machine and receives the following error:

Startup Failed

Personal vDisk failed to start

Status Code: 15

How could a Citrix Administrator resolve this issue?

- A. Change the startup order.
- B. Restart the Desktop OS machine.
- C. Run an inventory update on the Desktop OS machine.
- D. Reconfigure the Virtual Delivery Agent of the affected Desktop OS machine.

**Correct Answer: C**

**Section: Troubleshooting a Citrix XenDesktop 7.6 Solution**

**Explanation**

**Explanation/Reference:**

**QUESTION 82**

Scenario: An application is NOT functioning as expected. The application was installed on a vDisk that has been placed in Standard mode. The vDisk is assigned to Desktop OS machines. Those Desktop OS machines have a 5 GB cache disk associated with them and the vDisk is configured to 'cache to RAM with overflow to disk'. A Citrix Administrator attempted to view the Windows event logs from the previous week, but the logs only go back to the most recent restart. What should the administrator do to ensure that all logs are retained?

- A. Enable WINRM on the image.
- B. Change the location of the write cache.
- C. Use the write-eventlog PowerShell cmdlet.
- D. Change the path of the event logs to that of the write cache disk.

**Correct Answer: D**

**Section: Troubleshooting a Citrix XenDesktop 7.6 Solution**

**Explanation**

**Explanation/Reference:**

**QUESTION 83**

Scenario: A Citrix Administrator is unable to connect to the XenServer hosts through XenCenter. Server and Desktop OS machines hosted in the XenServer resource pool are functioning as expected. What is the likely cause of this issue?

- A. Pool master failure
- B. HA Heartbeat failure
- C. License Server failure
- D. Storage Area Network failure

**Correct Answer: A**

**Section: Troubleshooting a Citrix XenDesktop 7.6 Solution**

**Explanation**



**Explanation/Reference:**

**QUESTION 84**

Scenario: Human Resources has published training videos that all employees must watch. Employees are encountering buffering delays and poor video quality when trying to watch the videos. Which tool could a Citrix Administrator use to identify the cause of this issue?

- A. Citrix Studio
- B. HDX Monitor
- C. CDF Control
- D. Task Manager

**Correct Answer: B**

**Section: Troubleshooting a Citrix XenDesktop 7.6 Solution**

**Explanation**

**Explanation/Reference:**

**QUESTION 85**

Scenario: A Desktop OS machine is unresponsive. The user connected to the machine was in the process of creating a very large presentation using Microsoft PowerPoint. The presentation had NOT been saved prior to the machine becoming unresponsive.

What should a Citrix Administrator do to resolve this issue while preventing data loss?

- A. Migrate the Desktop OS machine to a different host.
- B. Restart the Desktop OS machine from Citrix Studio.
- C. Move the target device to another Provisioning Services server.
- D. Use Citrix Director to locate and terminate any rogue processes.

**Correct Answer: D**

**Section: Troubleshooting a Citrix XenDesktop 7.6 Solution**

**Explanation**

**Explanation/Reference:**

**QUESTION 86**

Scenario: A Citrix Administrator changed a policy setting in Citrix Studio and assigned the policy to the default user group XDWin8Users. The administrator then tested the new setting with User1, who is a member of the XDWin8Users group. After logging on with User1, the administrator finds that the new setting is NOT

working.

What is the first step the administrator should take to investigate this issue?

- A. Use the Modeling Wizard in Citrix Studio.
- B. Generate a Resultant Set of Policy report on a Domain Controller.
- C. Generate a Resultant Set of Policy report on the Desktop OS machines.
- D. Use the Modeling Wizard in Microsoft Group Policy Management console.

**Correct Answer:** A

**Section:** Troubleshooting a Citrix XenDesktop 7.6 Solution

**Explanation**

**Explanation/Reference:**

#### **QUESTION 87**

Scenario: When users log on, their Desktop OS machines launch automatically in full screen. These users have to log out of their Desktop OS machine to access their hosted applications. How could a Citrix Administrator prevent the Desktop OS machines from launching automatically in full screen mode?

- A. Update Citrix Receiver.
- B. Modify the default desktop viewer setting.
- C. Reconfigure the web.config file for the appropriate store.
- D. Configure an auto-launch policy on the Delivery Controller.

**Correct Answer:** C

**Section:** Troubleshooting a Citrix XenDesktop 7.6 Solution

**Explanation**

**Explanation/Reference:**

#### **QUESTION 88**

Scenario: Session Prelaunch is configured for all users in an environment. A new user complains about slow logon. A Citrix Administrator finds that Session Prelaunch is NOT working as expected for the new user and is working as expected for all other users.

What is the likely cause of this issue?

- A. The user is NOT using the HTML5 Receiver.
- B. The NetScaler Gateway plug-in is NOT installed.
- C. The Citrix Receiver is installed without the /includeSSON switch.

D. The user certificate is NOT installed on the endpoint client device.

**Correct Answer: C**

**Section: Troubleshooting a Citrix XenDesktop 7.6 Solution**

**Explanation**

**Explanation/Reference:**

**QUESTION 89**

Users complain that all printers mapped from the Citrix Universal Print Server are in an offline state. What could be the likely cause of this issue?

- A. The Universal Print Server policy setting is set to 'Disabled'.
- B. The Citrix Universal Print Service has stopped running on the Print Server.
- C. The Windows Print Spooler service has stopped running on the Server OS machines.
- D. The Universal Print Server policy setting is set to 'Enabled with no fallback to Windows native remote printing'.

**Correct Answer: B**

**Section: Troubleshooting a Citrix XenDesktop 7.6 Solution**

**Explanation**

**Explanation/Reference:**

**QUESTION 90**

Which three methods could a Citrix Administrator use to regain access to the License Server console after losing the password? (Choose three.)

- A. Restart the Citrix License Service.
- B. Reinstall the License Server console.
- C. Delete all \*.lic files in the license folder.
- D. Edit the server.xml file on the License Server.
- E. Change the Default Admin User using Imadmin.exe.

**Correct Answer: BDE**

**Section: Troubleshooting a Citrix XenDesktop 7.6 Solution**

**Explanation**

**Explanation/Reference:**

**QUESTION 91**

Scenario: A Citrix Administrator discovers that a high number of Desktop OS machines are displaying as 'Unregistered.' The administrator successfully logs in to one of the affected Desktop OS machines as a domain user. All of the affected Desktop OS machines are on the same hosting infrastructure. Several Desktop OS machines on the same hosting infrastructure have registered successfully. Users in the environment have NOT reported any issues. Why are the Desktop OS machines displaying as 'Unregistered'?

- A. The Broker service is NOT running on the Delivery Controllers.
- B. The Citrix License Server is NOT communicating over port 27000.
- C. The Desktop OS machines computer accounts have been deleted from Active Directory.
- D. The difference in the system date and time settings on the Desktop OS machines and the Delivery Controller is greater than 5 minutes.

**Correct Answer:** D

**Section:** Troubleshooting a Citrix XenDesktop 7.6 Solution

**Explanation**

**Explanation/Reference:**

**QUESTION 92**

Scenario: A Citrix Administrator discovers that a user is unable to connect to a Desktop OS machine. While reviewing Citrix Director, the administrator identifies that the Desktop OS machine is marked as 'Unregistered'.

Which two tools could the administrator use to troubleshoot this issue? (Choose two.)

- A. rsop.msc
- B. telnet.exe
- C. netsh.exe
- D. nbtstat.exe
- E. netstat.exe

**Correct Answer:** BE

**Section:** Troubleshooting a Citrix XenDesktop 7.6 Solution

**Explanation**

**Explanation/Reference:**

**QUESTION 93**

Scenario: A user needs two Desktop OS machines from the same group open at once. When the user attempts to launch a second Desktop OS machine, the first Desktop OS machine closes and another is launched.

What could a Citrix Administrator edit to resolve this issue?

- A. Properties of the Delivery Group
- B. Web.config file on the StoreFront server
- C. Properties of the Desktop OS machine catalog
- D. Virtual Delivery Agent settings on the Desktop OS machines

**Correct Answer:** A

**Section:** Troubleshooting a Citrix XenDesktop 7.6 Solution

**Explanation**

**Explanation/Reference:**

#### **QUESTION 94**

Which component CANNOT be co-located with Delivery Controller on the same server?

- A. SQL Server
- B. License Server
- C. StoreFront Server
- D. Domain Controller

**Correct Answer:** D

**Section:** Troubleshooting a Citrix XenDesktop 7.6 Solution

**Explanation**

**Explanation/Reference:**

#### **QUESTION 95**

Scenario: A Citrix Administrator needs to change Provisioning Services from PXE to TFTP. During the migration on a newly created VLAN, the administrator receives this error message:

Boot device not found.

Which two DHCP server options should the administrator set to allow the virtual machines to start up from the vDisk? (Choose two.)

- A. 60
- B. 66

- C. 67
- D. 69

**Correct Answer:** AD

**Section:** Troubleshooting a Citrix XenDesktop 7.6 Solution

**Explanation**

**Explanation/Reference:**

#### **QUESTION 96**

Scenario: Users of the Human Resource (HR) user group report that one of their applications is NOT being personalized. A Citrix Administrator discovers that the application writes user-specific data in %programfiles%\HR\%username%.

Which policy could the administrator configure to enable personalization of this application?

- A. Folders to mirror
- B. Path to user store
- C. Directories to synchronize
- D. Path to cross platform settings store

**Correct Answer:** C

**Section:** Troubleshooting a Citrix XenDesktop 7.6 Solution

**Explanation**

**Explanation/Reference:**

#### **QUESTION 97**

Scenario: Only users with Desktop OS machines accessed with pass-through authentication are receiving the following error message when they try to launch hosted applications:

'Unable to launch as the application is not currently available.' How could a Citrix Administrator resolve this issue?

- A. Using a Citrix policy
- B. Through a registry setting
- C. Using a PowerShell cmdlet
- D. Through the Delivery Group setting

**Correct Answer:** C

**Section:** Troubleshooting a Citrix XenDesktop 7.6 Solution

## **Explanation**

### **Explanation/Reference:**

#### **QUESTION 98**

How could a Citrix Administrator ensure that access to Desktop OS machines and hosted applications through a particular StoreFront store is restricted to users of Chromebooks only?

- A. Hide the store and use a provisioning file.
- B. Configure an Authentication policy on the NetScaler Gateway.
- C. Configure Trusted Domains with mycompany.com as the default domain.
- D. Add the 'KEYWORDS:Chromebook' to the Delivery Group in Citrix Studio.

**Correct Answer:** A

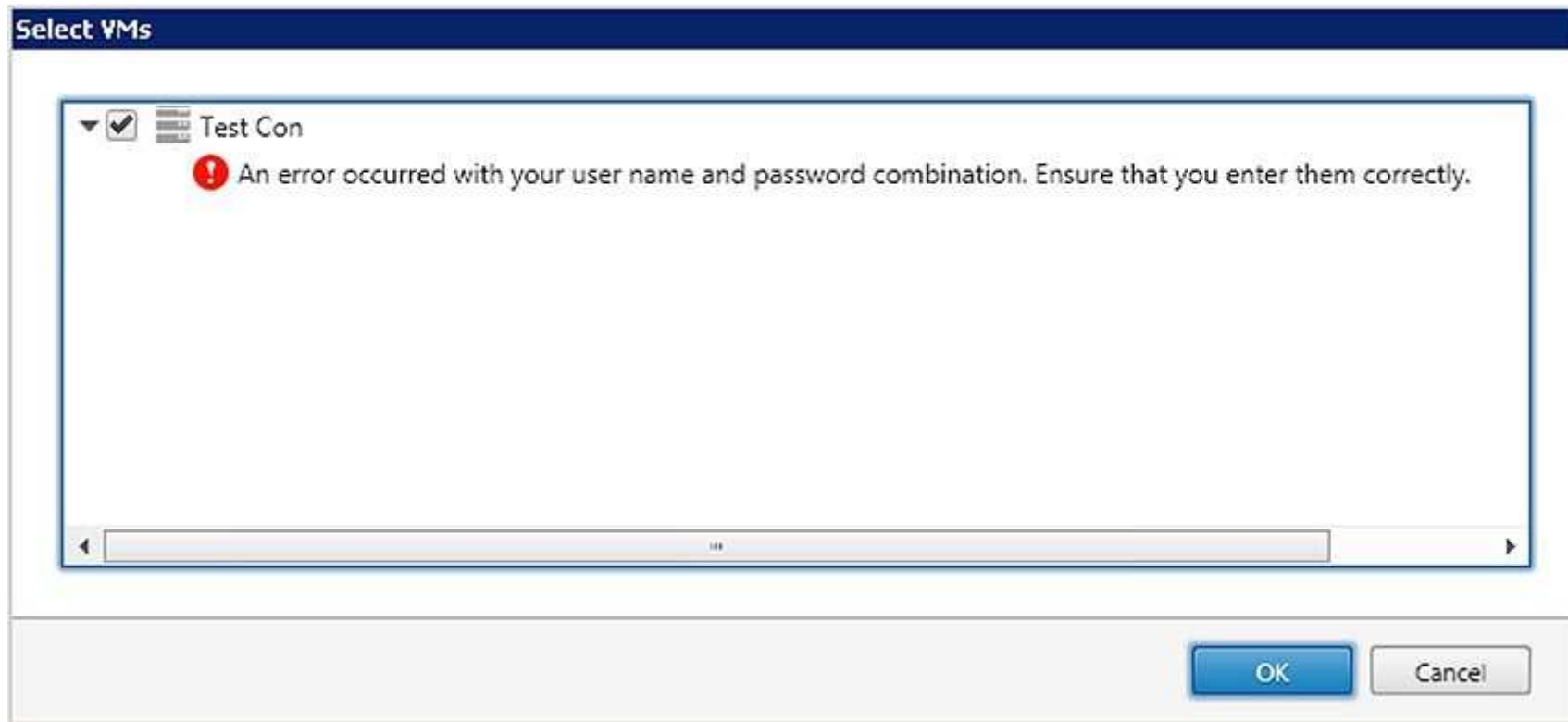
**Section:** Troubleshooting a Citrix XenDesktop 7.6 Solution

## **Explanation**

### **Explanation/Reference:**

#### **QUESTION 99**

Scenario: While attempting to add machines to a Session Machine Catalog using Machine Creation Services, a Citrix Administrator receives an error message. Click on the Exhibit button to view the error message.



In which Citrix Studio node should the administrator go to resolve this error?

- A. Hosting
- B. Controllers
- C. Configuration
- D. Machine Catalogs

**Correct Answer:** A

**Section:** Troubleshooting a Citrix XenDesktop 7.6 Solution

**Explanation**

**Explanation/Reference:**



### QUESTION 100

Scenario: While updating the XenServer tools of the vDisk on the master target device, a Citrix Administrator receives the following error:  
STOP: 0x0000007B

How should the administrator update the master target device and vDisk created from that device?

- A. Perform a Reverse image.
- B. Restart the Stream service.
- C. Downgrade the XenServer tools.
- D. Change the write cache location to cache on server.

**Correct Answer:** A

**Section:** Troubleshooting a Citrix XenDesktop 7.6 Solution

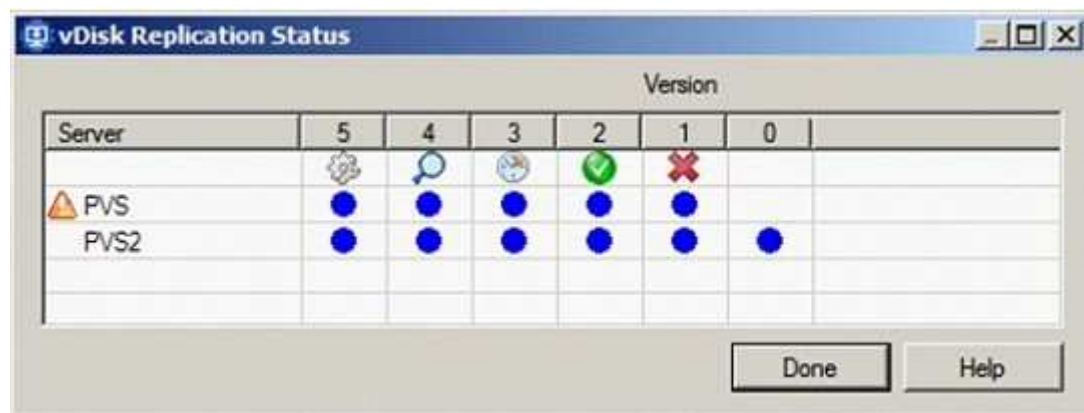
**Explanation**

**Explanation/Reference:**

### QUESTION 101

Scenario: A Citrix Administrator needs to replicate a vDisk between two production Provisioning Services servers named PVS and PVS2. The Replication Status dialog box shows an orange warning signal with a message.

Click on the Exhibit button to view the dialog box.



What could be the cause of this issue?

- A. The SOAP service is NOT running on the PVS server.
- B. The server time is NOT configured correctly on the PVS and PVS2 servers.
- C. The Provisioning Services server does NOT have access to one of the vDisk locations.
- D. The network card configurations on the PVS server do NOT match the configurations on the PVS2 server.

**Correct Answer: C**

**Section: Troubleshooting a Citrix XenDesktop 7.6 Solution**

**Explanation**

**Explanation/Reference:**

#### **QUESTION 102**

Scenario: A Citrix Administrator needs to install a new application on a Desktop OS machine. A new ISO image was added to the CIFS file share that is attached to the storage repository. When the administrator tries to install the application, the ISO is NOT showing as available. Which xe command should the administrator run to make the ISO image available?

- A. sr-scan
- B. sr-update
- C. vm-cd-add
- D. vm-disk-add

**Correct Answer: A**

**Section: Troubleshooting a Citrix XenDesktop 7.6 Solution**

**Explanation**

**Explanation/Reference:**



<http://www.gratisexam.com/>