

## PassGuide.642-035.96q

Number: Cisco 642-035

Passing Score: 800

Time Limit: 120 min

File Version: 4.5



<http://www.gratisexam.com/>



### **Cisco 642-035 Troubleshooting Cisco Unified Computing**

- i) Cisco 642-035 exam for me became a nightmare and then my friend suggested this dump as the only solution for me.
- ii) I sat confidently and cleared it in no time.
- iii) I passed with an excellent grade 90%
- iv) This dump provides you the platform to grasp Cisco 642-035 completely, which was like a dream for me since the beginning.
- v) Thank you vce, for rescuing me.
- vi) I accepted the importance of this outstanding dump.

<http://www.gratisexam.com/>

## Exam A

### QUESTION 1

A Cisco UCS chassis has two ports on I/O Module 1 connected to Fabric Interconnect A, and two ports on I/O Module 2 connected to Fabric Interconnect B. The I/O modules are connected to ports 1 and 2 on their respective fabric interconnects, and end host mode is configured. After a link failure occurs on port 1 of I/O Module 1, what happens to the traffic that was pinned to that link?

- A. The traffic fails until the link issue is resolved.
- B. The traffic is repinned to I/O Module 2 link 1, which is connected to Fabric Interconnect B.
- C. The traffic is repinned to the remaining link between I/O Module 1 and Fabric Interconnect A.
- D. The traffic is repinned automatically to Fabric Interconnect B.

**Correct Answer:** C

**Section:** (none)

**Explanation**

**Explanation/Reference:**

Explanation:

### QUESTION 2

During a password recovery of a Cisco UCS system in a cluster configuration, what happens to blade traffic?

- A. There is no interruption to traffic, as the fabrics go down one at a time.
- B. Traffic stops flowing until the process is complete.
- C. There is no interruption to traffic because both fabrics stay up the whole time.
- D. Traffic will continue to flow, but at a limited rate until the process is complete.

**Correct Answer:** B

**Section:** (none)

**Explanation**

**Explanation/Reference:**

Explanation:

### QUESTION 3

For a KVM session to be successful, which two of these need to be done? (Choose two.)

- A. The Cisco IMC IP address needs to be assigned on the Admin tab.
- B. The Cisco IMC IP address needs to be in the same subnet as the management IP.

- C. The Cisco IMC needs to be upgraded to the same version as the UCS Manager.
- D. The server needs to be fully discovered.

**Correct Answer:** AD

**Section:** (none)

**Explanation**

**Explanation/Reference:**

obvious answer.

#### **QUESTION 4**

As a Cisco UCS administrator, you have a large deployment of C-Series servers. You decide to integrate these into a Cisco UCS Manager environment to simplify management. Which two of these will you need to purchase? (Choose two.)

- A. two fabric interconnects
- B. a dedicated Cisco IMC
- C. two fabric extenders
- D. two I/O modules

**Correct Answer:** AC

**Section:** (none)

**Explanation**

**Explanation/Reference:**

Explanation:

#### **QUESTION 5**

Which three Cisco UCS server components can be upgraded via a host firmware package? (Choose three.)



<http://www.gratisexam.com/>

- A. BIOS
- B. Cisco UCS Manager

- C. I/O module
- D. Cisco IMC
- E. fabric interconnect
- F. adapter
- G. board controller

**Correct Answer:** AFG

**Section:** (none)

**Explanation**

**Explanation/Reference:**

Explanation:

#### **QUESTION 6**

Which three methods can be used to upgrade the Cisco IMC? (Choose three.)

- A. host firmware package
- B. blade firmware package
- C. controller firmware package
- D. management firmware package
- E. directly on the blade, under the Installed Firmware tab
- F. directly on the blade, under the Blade Firmware tab
- G. directly on the blade, under Inventory > CIMC

**Correct Answer:** DEG

**Section:** (none)

**Explanation**

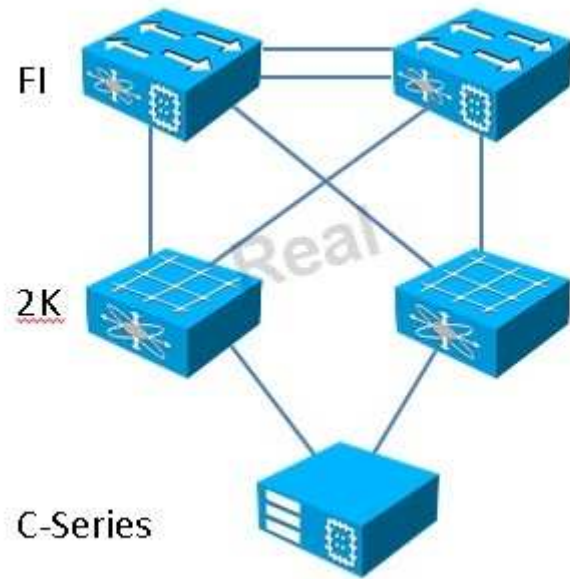
**Explanation/Reference:**

answer is clear.

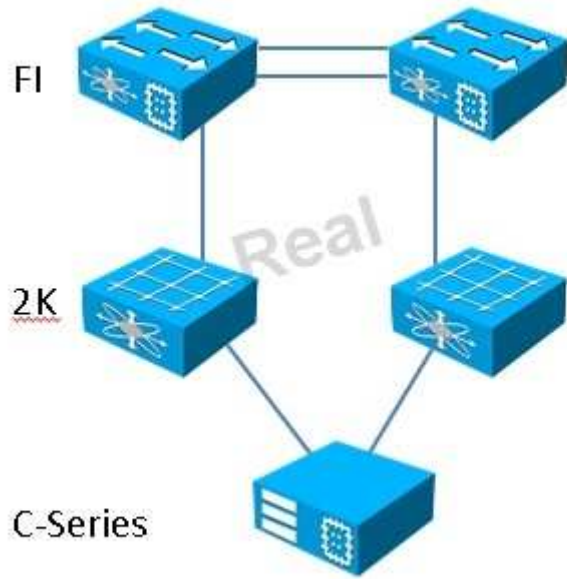
#### **QUESTION 7**

Which of these is a supported Cisco C-Series integration topology?

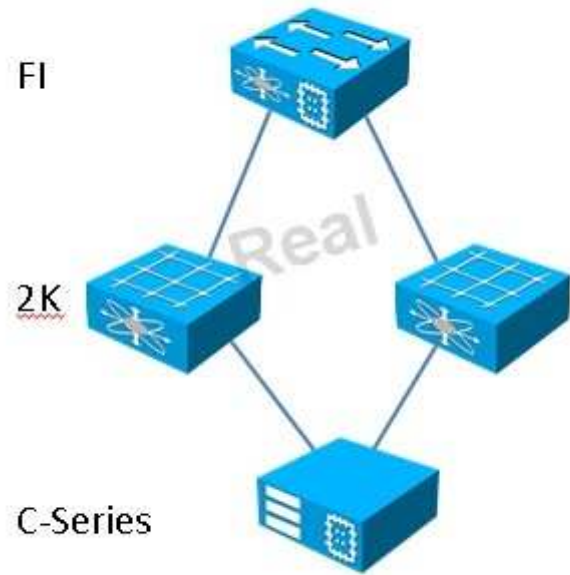
A.



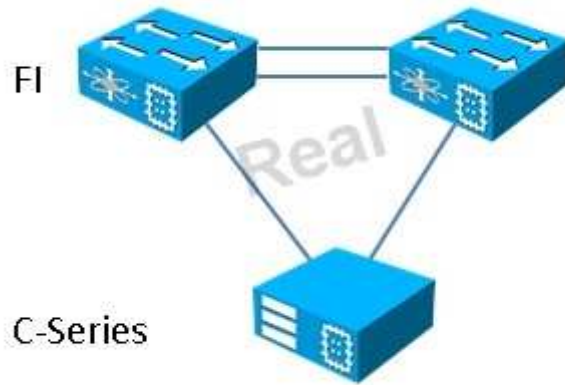
B. Real 20  
Cisco 642-035 Exam



C. Real 21  
Cisco 642-035 Exam



D.



- A. Exhibit A
- B. Exhibit B
- C. Exhibit C
- D. Exhibit D

**Correct Answer:** B

**Section:** (none)

**Explanation**

**Explanation/Reference:**

exact answer.

#### **QUESTION 8**

Which command sequence in the Cisco UCS C-Series rack server CLI sends tech support data to a TFTP server?

- A. 

```
ucs-c250 / # scope cimc
ucs-c250 /cimc # scope tech-support
ucs-c250 /cimc/tech-support # set path default.tar.gz ucs-c250 /cimc/tech-support *# set tftp-ip 192.168.70.45 ucs-c250 /cimc/tech-support *# commit
```
- B. 

```
ucs-c250 / # scope system
ucs-c250 /system # scope tech-support
ucs-c250 /system/tech-support # set path default.tar.gz ucs-c250 /system/tech-support *# set tftp-ip 192.168.70.45 ucs-c250 /system/tech-support *# commit
```



- C. ucs-c250 / # scope support  
ucs-c250 /support # scope tech-support  
ucs-c250 /support/tech-support # set path default.tar.gz ucs-c250 /support/tech-support \*# set tftp-ip 192.168.70.45 ucs-c250 /support/tech-support \*# commit
- D. ucs-c250 / # scope fault  
ucs-c250 /fault # scope tech-support  
ucs-c250 /fault/tech-support # set path default.tar.gz ucs-c250 /fault/tech-support \*# set tftp-ip 192.168.70.45 ucs-c250 /fault/tech-support \*# commit

**Correct Answer:** A

**Section:** (none)

**Explanation**

**Explanation/Reference:**

Explanation:

#### **QUESTION 9**

What is the recommended procedure to update Cisco UCS C-Series rack-mount server firmware?

- A. Launch the Cisco UCS Firmware Update Utility from virtual media.
- B. Launch the Cisco UCS Host Update Utility from virtual media.
- C. Launch the Cisco UCS Server Update Utility from virtual media.
- D. Launch the Cisco UCS CIMC Update Utility from virtual media.

**Correct Answer:** B

**Section:** (none)

**Explanation**

**Explanation/Reference:**

answer is to the point.

#### **QUESTION 10**

You are installing Microsoft Windows Server 2008 R2 on a Cisco UCS C210 M2 server, and the installer does not see local storage on the LSI MegaRAID SAS 9260-4i controller that is installed.

Which statement explains the issue?

- A. The driver is not included in the installer DVD. Press F6 to load the LSI RAID driver from CD or virtual media.
- B. The virtual disk is not created and online.
- C. The LSI 9260-4i is only supported by Red Hat Enterprise Linux and VMware vSphere 4.0 and later.
- D. The installer DVD for Microsoft Windows Server 2008 R2 did not include the LSI driver until SP2.

**Correct Answer:** B

**Section:** (none)

**Explanation**

**Explanation/Reference:**

Explanation:

**QUESTION 11**

Which CLI command will indicate whether a Cisco UCS C-Series rack-mount server has any failed DIMMs?

- A. ucs-c250 / # scope chassis  
ucs-c250 /chassis # show dimm-summary
- B. ucs-c250 / # scope chassis  
ucs-c250 /chassis # show dimm-fault
- C. ucs-c250 / # scope chassis  
ucs-c250 /chassis # show dimm-ecc
- D. ucs-c250 / # scope chassis  
ucs-c250 /chassis # show dimm-recovery

**Correct Answer:** A

**Section:** (none)

**Explanation**

**Explanation/Reference:**

suitable answer.

**QUESTION 12**

You successfully install VMware ESXi 5.0 U1 on a Cisco UCS B200 M3 server to a Fibre Channel LUN. When you reboot the server, you see the message "Reboot and Select Proper Boot device or insert Boot Media in selected Boot device and press a key." What are the first two pieces of information you should gather to troubleshoot the boot failure? (Choose two.)

- A. Connect to the NX-OS shell via the CLI and run the show npv flogi-table command.
- B. SSH to the MDS 9124 and run the show flogi database command.
- C. Validate the boot target WWPN and LUN ID in the service profile.
- D. Validate the correct source WWPN in the service profile vHBA definition.
- E. Validate zoning for your WWPN on the Cisco MDS 9124.
- F. Validate that the boot order indicates the vHBA as the first device.
- G. Ensure LUN masking is correctly configured on the storage controller.

**Correct Answer:** CF

**Section:** (none)

**Explanation**

**Explanation/Reference:**

Explanation:

**QUESTION 13**

A customer calls in a trouble ticket complaining of unacceptable read I/O latency on a Cisco UCS C210 M2 server with an LSI MegaRAID 9260-8i with an 8-disk RAID-10 virtual disk. As you validate the RAID controller configuration, which of these configured items impacts read performance at the controller level?

- A. all disks are 146GB 6 Gb SAS 15K RPM SFF
- B. read ahead cache is enabled
- C. BGI rate = 0
- D. strip size = 256k
- E. no hot spare

**Correct Answer:** D

**Section:** (none)

**Explanation**

**Explanation/Reference:**

Explanation:

**QUESTION 14**

You are troubleshooting an FCoE SAN boot issue on a Cisco UCS C240 M3 server with a VIC 1225. Which two of these represent the correct way to bind VSAN 11 to interface vfc5 attached to

interface Ethernet 1/5? (Choose two.)

- A. 5548UP(config)# int vfc 5  
5548UP(config-if)# bind interface Ethernet1/5 vsan 11
- B. 5548UP(config)# vsan database  
5548UP(config-vsan-db)# vsan 11 interface vfc5
- C. 5548UP(config)# interface Ethernet1/5  
5548UP(config-if)# bind vsan 11
- D. 5548UP(config)# vsan database  
5548UP(config-vsan-db)# bind interface vfc5 vsan 11
- E. 5548UP(config)# vsan database

```
5548UP(config-vsan-db)# interface vfc5 vsan 11
```

- F. 5548UP(config)# vsan database  
5548UP(config-vsan-db)# interface Ethernet1/5 vsan 11

**Correct Answer:** AB

**Section:** (none)

**Explanation**

**Explanation/Reference:**

agree with the answer.

### QUESTION 15

You are troubleshooting an FCoE boot issue on a Cisco UCS C220 M3 server with a VIC 1225 CNA. Which two pieces of information can you directly infer from the output of the show zone active command below? (Choose two.)

```
zone name Server_1-to-Storage vsan 11
```

```
pwwn 50:06:01:60:3b:a0:08:9f [Storage]
```

```
* fcid 0x3b000b [pwwn 20:00:00:25:b5:04:0a:02] [C22_Server]
```

- A. The storage controller is not logged into the fabric.
- B. The server is not logged into the fabric.
- C. Only the storage controller is logged into the fabric.
- D. Only the server is logged into the fabric.
- E. The initiator and target cannot communicate because they are on the wrong VSAN.
- F. The WWPN of the storage controller is mistyped.
- G. The initiator and target cannot communicate because the zone name does not match the server name (C22\_Server).

**Correct Answer:** AD

**Section:** (none)

**Explanation**

**Explanation/Reference:**

superb answer.

### QUESTION 16

Which statement is true with respect to resetting a forgotten Cisco IMC admin password on a Cisco UCS C-Series rack-mount server?

- A. Download the Cisco IMC password reset utility ISO file from Cisco.com and boot from virtual media. The server will boot the Linux Live CD and reset the password to 'password'.
- B. Download the Cisco IMC password reset EFI plugin file from Cisco.com to a USB flash drive and boot to the EFI shell. The startup.nsh file will auto-load and reset the password to 'password'.
- C. Shut down the server and remove all power supplies for 3 minutes to allow the password capacitor to discharge. Use the default password 'password' to log back in.
- D. Shut down the server and remove all power cords. Open the case and short the jumper specified in the model-specific Cisco UCS C-Series Server Installation and Service Guide.

**Correct Answer:** D

**Section:** (none)

**Explanation**

**Explanation/Reference:**

Explanation:

#### **QUESTION 17**

Which four tasks can be performed via Cisco IMC remote access to a Cisco UCS system? (Choose four.)

- A. power cycle the server
- B. deploy an operating system
- C. toggle the locator LED
- D. configure the boot order
- E. view properties and sensors
- F. configure the hypervisor
- G. enable Cisco UCS Manager

**Correct Answer:** ACDE

**Section:** (none)

**Explanation**

**Explanation/Reference:**

Explanation:

#### **QUESTION 18**

Which remote access protocol is used by default to obtain CLI access to a Cisco UCS C-Series standalone server?

- A. Telnet

- B. SSH
- C. HTTP
- D. SSL
- E. SOCKS

**Correct Answer:** B

**Section:** (none)

**Explanation**

**Explanation/Reference:**

great answer.

#### **QUESTION 19**

Which actions on a Cisco UCS Server can be performed under the Cisco IMC utilities? (Choose Four.)

- A. export tech support information to a remote host
- B. download a tech support file locally
- C. reboot the Cisco IMC
- D. recover a corrupt BIOS
- E. install firmware updates

**Correct Answer:** ABCD

**Section:** (none)

**Explanation**

**Explanation/Reference:**

Explanation:

#### **QUESTION 20**

During the installation of Windows 2008 64-bit operating system on a Cisco UCS server, the RAID controller is not found. What is the cause of the problem?

- A. The Cisco IMC firmware needs to be updated.
- B. The LSI option ROM needs to be configured by pressing Ctrl-H during post.
- C. The LSI drivers are not bundled and need to be loaded by clicking the Load Driver option to point to the correct drivers.
- D. Windows 2008 64-bit operating system is not supported on Cisco UCS servers.

**Correct Answer:** C

**Section:** (none)

## Explanation

### Explanation/Reference:

Explanation:

### QUESTION 21

A local storage installation of ESX on a Cisco UCS C-Series server has failed due to local storage issues. What is the cause of the problem?

- A. LSI drivers are not bundled with ESX.
- B. The hard drive has a 1-TB partition size.
- C. The server only has an onboard controller, while ESX requires an LSI RAID controller card.
- D. ESX is not supported on Cisco UCS C-series servers.

**Correct Answer: C**

**Section: (none)**

### Explanation

### Explanation/Reference:

efficient answer.

### QUESTION 22

A customer is trying to boot an operating system installed on a Cisco UCS B-Series blade server after a RAID1 cluster migration. The RAID LUN remains in inactive state during and after the service profile association and the server does not boot. What is the cause of this problem?

- A. RAID1 is not supported in cluster migration mode on a Cisco UCS B-Series blade server.
- B. The local disk configuration policy in the service profile on the server is configured with Any Configuration mode rather than RAID1.
- C. The server needs to be booted via SAN in cluster migration to support RAID1.
- D. The Cisco UCS B-Series blade server has older firmware that needs to be updated first.

**Correct Answer: B**

**Section: (none)**

### Explanation

### Explanation/Reference:

Explanation:

### QUESTION 23

A customer would like to create an Ethernet traffic monitoring session on a Cisco UCS server to troubleshoot network connectivity. The customer has entered the following commands via CLI:

UCS-A# scope eth-traffic-mon

UCS-A /eth-traffic-mon # scope fabric a

UCS-A /eth-traffic-mon/fabric # create eth-mon-session EthMonitor33

UCS-A /eth-traffic-mon/fabric/eth-mon-session\* # create dest-interface 2 12

UCS-A /eth-traffic-mon/fabric/eth-mon-session/dest-interface\* # set speed 20gbps

UCS-A /eth-traffic-mon/fabric/eth-mon-session/dest-interface\* # commit-buffer

UCS-A /eth-traffic-mon/fabric/eth-mon-session/dest-interface #

Which outcome will this command sequence produce?

- A. It will create an Ethernet traffic monitoring session to copy and forward traffic to the destination port at slot 2, port 12, will set the admin speed to 20 Gb/s, and will commit the transaction.
- B. It will create an Ethernet traffic monitoring session to copy and forward traffic to the destination port at slot 2, port 33, will set the admin speed to 20 Gb/s, and will commit the transaction.
- C. It will create an Ethernet traffic monitoring session to copy and forward traffic to the destination port at slot 33, port 12, will set the admin speed to 20 Gb/s, and will commit the transaction.
- D. It will create an Ethernet traffic monitoring session to copy and forward traffic to the destination port at slot 2, port 12, will set the admin speed to 10 Gb/s, and will commit the transaction.

**Correct Answer:** A

**Section:** (none)

**Explanation**

**Explanation/Reference:**

nicey written answer.

#### **QUESTION 24**

A customer is configuring VSANs in a Cisco UCS domain. After configuring the VSANs 3840, 3841, and 3842 in FC end-host mode, the customer sees that these VSANs are not operational and that Cisco UCS Manager is raising faults. What is the cause of this problem?

- A. VSANs 3840, 3841, and 3842 should be in the allowed list on the trunk to clear the fault.
- B. VSANs 3840 to 4079 cannot be used in Fibre Channel end-host mode in a Cisco UCS domain.
- C. The fabric interconnect needs to be configured in switching mode and the VSANs need to be allowed on the trunk.
- D. Use the UCS CLI to clear the fault on the VSAN trunk to forward the VSANs with faults.



**Correct Answer:** B

**Section:** (none)

**Explanation**

**Explanation/Reference:**

Explanation:

**QUESTION 25**

What is the correct sequence to export tech support data from the Cisco IMC GUI interface?

- A. Admin tab > Utilities > Export Technical Support to TFTP
- B. Utilities tab > Utilities > Export Technical Support to TFTP
- C. Server tab > Utilities > Export Technical Support to TFTP
- D. Communications tab > Utilities > Export Technical Support to TFTP
- E. Support tab > Utilities > Export Technical Support to TFTP
- F. Help tab > Utilities > Export Technical Support to TFTP

**Correct Answer:** A

**Section:** (none)

**Explanation**

**Explanation/Reference:**

answer is verified.

**QUESTION 26**

You are attempting to install Microsoft Server 2008 R2 on a Fibre Channel LUN, but the installer does not see the LUN. You have used F6 to load the appropriate SCSI driver. What should your first troubleshooting step be?

- A. Email the SAN administrator to validate that your LUN is defined.
- B. Check the configuration of the vHBA in the service profile.
- C. Validate that the boot order is correct.
- D. Validate zoning on the Fibre Channel switch.
- E. Validate that the Fibre Channel uplink from the fabric interconnect is up.

**Correct Answer:** B

**Section:** (none)

**Explanation**

**Explanation/Reference:**

Explanation:

**QUESTION 27**

A customer calls in a trouble ticket and explains that after a power failure, the UPS was discovered to be defective and the Cisco UCS C210 M2 server running Windows 2008 R2 went down without proper shutdown. After restarting the server, you discover the RAID 5 array rebuilding parity. Which write-cache settings on the LSI MegaRAID 9260-4i controller explain this symptom?

- A. write back
- B. write through
- C. write back with BBU
- D. no write cache
- E. no hot spare

**Correct Answer: A**

**Section: (none)**

**Explanation**

**Explanation/Reference:**

finest answer.

**QUESTION 28**

How long are the LED states saved after a blade is removed from a Cisco UCS chassis?

- A. 1 minute
- B. 5 minutes
- C. 10 minutes
- D. 30 minutes
- E. 60 minutes

**Correct Answer: C**

**Section: (none)**

**Explanation**

**Explanation/Reference:**

Explanation:

**QUESTION 29**

How does the FSM react after an error or timeout at a stage?

- A. stops
- B. retries until successful
- C. continues
- D. retries that stage at scheduled intervals



<http://www.gratisexam.com/>

- E. raises faults and continues

**Correct Answer:** D

**Section:** (none)

**Explanation**

**Explanation/Reference:**

Explanation:

**QUESTION 30**

On a Cisco UCS B-Series data center environment; how many default roles are there when utilizing RBAC for security restriction?

- A. 1
- B. 5
- C. 10
- D. 15
- E. 20

**Correct Answer:** C

**Section:** (none)

**Explanation**

**Explanation/Reference:**

exact answer.

**QUESTION 31**

While updating firmware in a Cisco UCS environment, what will the Cisco UCS Manager do?

- A. show you all versions available on Cisco.com
- B. show you all versions downloaded to the Cisco UCS Manager
- C. show you only versions that are supported in your environment
- D. show you only versions that you selected to show
- E. show you old and new versions from your download

**Correct Answer: C**

**Section: (none)**

**Explanation**

**Explanation/Reference:**

Explanation:

**QUESTION 32**

What is the maximum number of boot targets for an FCoE vHBA on a Cisco UCS C-Series server?

- A. 1
- B. 2
- C. 3
- D. 4

**Correct Answer: D**

**Section: (none)**

**Explanation**

**Explanation/Reference:**

Explanation:

**QUESTION 33**

Which CLI command identifies the service profile that is associated with a particular compute blade, VIF, vNIC type, link state, and pinned interface?

- A. show service-profile path server 1/2
- B. show service-profile circuit server 1/2
- C. show server-blade circuit server 1/2
- D. show server-blade path server 1/2

**Correct Answer: B**  
**Section: (none)**  
**Explanation**

**Explanation/Reference:**  
answer is genuine.

**QUESTION 34**  
Refer to the exhibit.



The screenshot shows a 'Login' dialog box with the following fields and values:

- User Name: cisco\wizcog
- Password: [Redacted]
- Domain: F340-31-16-UCS-2 (Native)

A red error message box is displayed with the text: "Login Error: Failed login info: UCSM is not available on secondary node". At the bottom of the dialog are 'Login' and 'Cancel' buttons.

Which mistake did the UCS administrator make when trying to access the GUI?

- A. specified the incorrect login domain
- B. did not use the VIP
- C. tried to login before the GUI had fully booted up
- D. password is incorrect
- E. attempted to login to the subordinate cluster peer

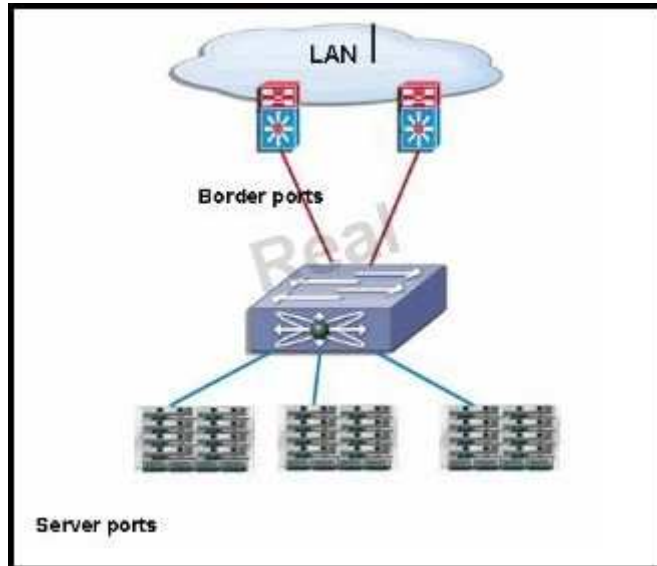
**Correct Answer: E**  
**Section: (none)**  
**Explanation**

**Explanation/Reference:**

Explanation:

**QUESTION 35**

Refer to the exhibit.



In a Cisco UCS environment, which switch mode does the exhibit portray?

- A. end host mode
- B. switching mode
- C. access mode
- D. core mode

**Correct Answer:** A

**Section:** (none)

**Explanation**

**Explanation/Reference:**

straight answer.

## QUESTION 36

Instructions

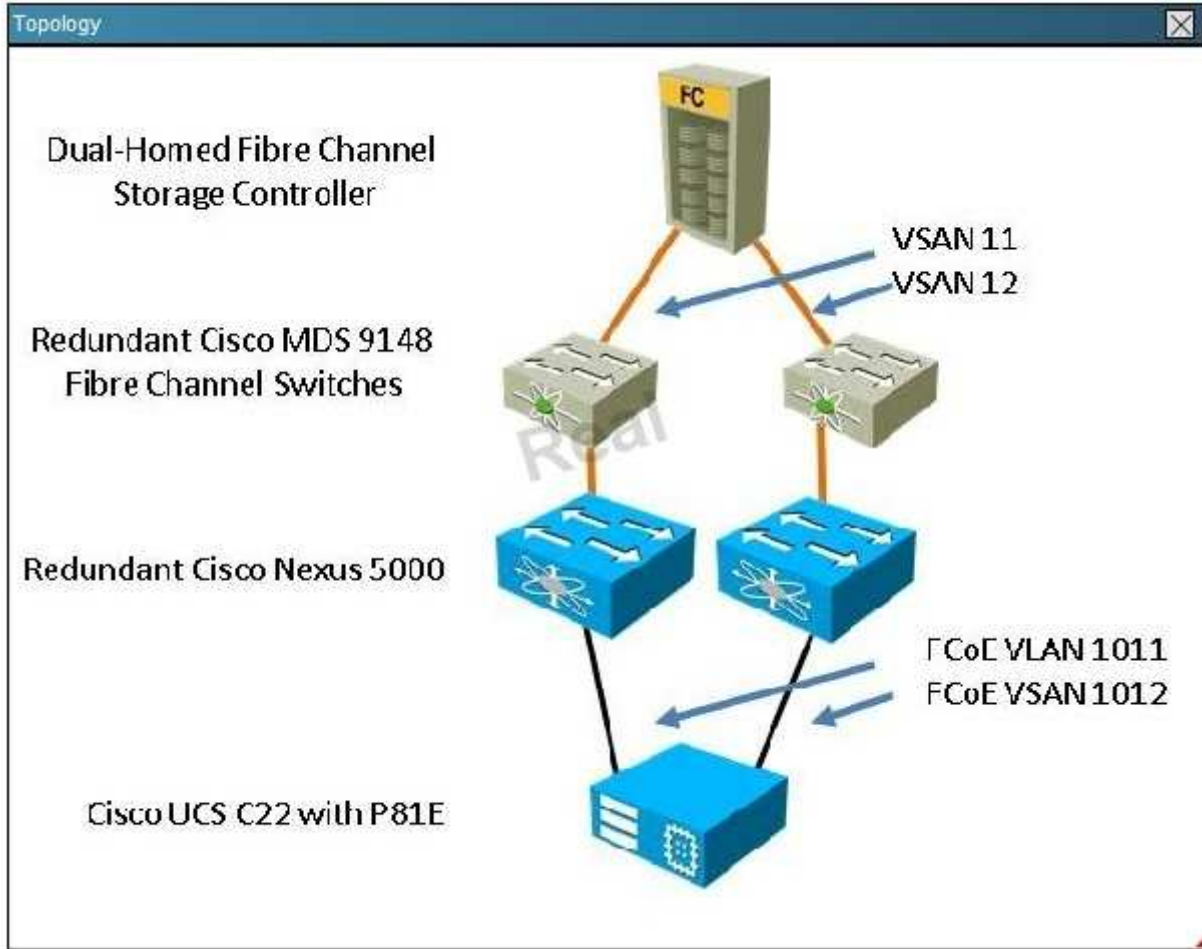
- **THIS TASK DOES NOT REQUIRE DEVICE CONFIGURATION.**
- **Before beginning the questions, carefully read the information in the Scenario tab and familiarize yourself with the network topology.**
- To access the multiple-choice questions, click on the numbered boxes on the left of the top panel.
- There are **four** multiple-choice questions with this task. Be sure to answer all four questions before clicking the Next button.
- Use the tabs at the bottom of the question to navigate between the Topology and question-specific Exhibits. Exhibit\_1 maps to Question 1, et cetera.

Scenario

You have received a trouble ticket from a customer with multiple FCoE issues deploying a Cisco UCS C22 M2 server. The server includes a Cisco UCS P81E VIC that has redundant connections to Cisco Nexus 5548 switches.

When the customer loads the installer for VMware ESXi 5.0, it is unable to connect to its boot LUN over Fabric A or Fabric B. To begin, you will concentrate your efforts on achieving connectivity on Fabric A.

The customer is a government agency with an information security policy prohibiting remote access into its network. It has provided a topology, command output from the Nexus 5548, and screenshots from the Cisco Integrated Management Controller of symptoms for you to troubleshoot.





Exhibit\_1

192.168.10.45 - KVM Console

File View Macros Tools Help

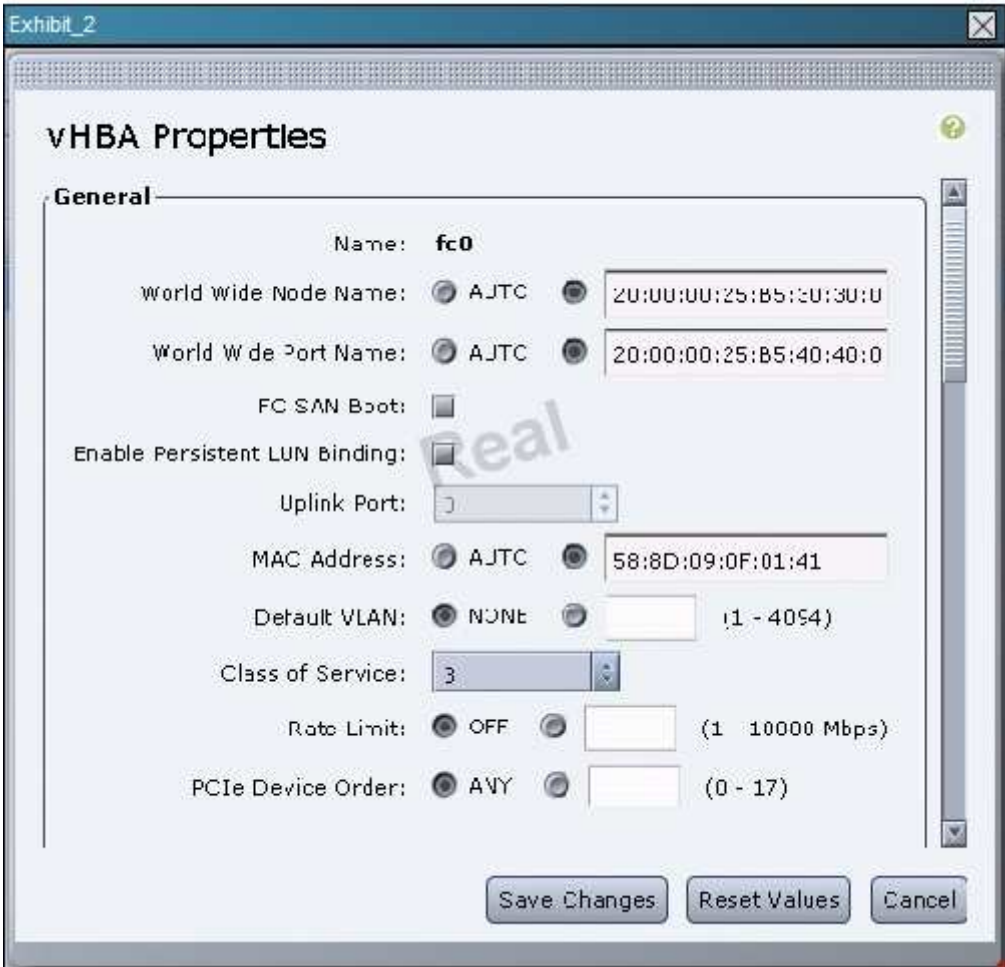
KVM VM

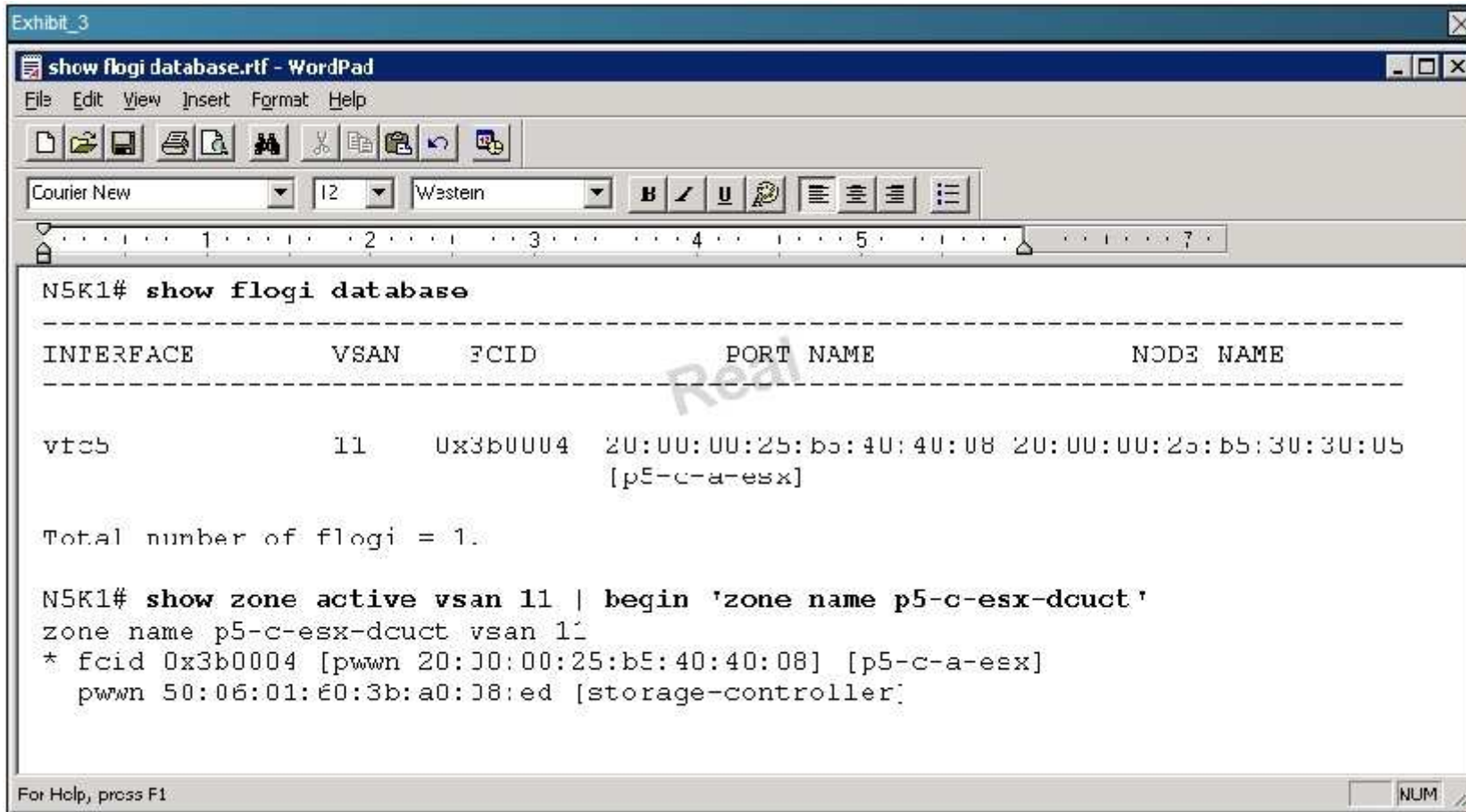
```
Initializing Intel(R) Boot Agent GE v1.3.35
PXE 2.1 Build 087 (WfM 2.0)

Cisco VIC FC, Boot Driver Version 2.0(2i)
(C) 2010 Cisco Systems, Inc.

Cisco VIC FC, Boot Driver Version 2.0(2i)
(C) 2010 Cisco Systems, Inc.

LSI MegaRAID SAS-MFI BIOS
Version 3.24.00 (Build October 26, 2011)
Copyright(c) 2011 LSI Corporation
HA -0 (Bus 18 Dev 0) LSI MegaRAID SAS 9260-4i
FW package: 12.12.0-0087
```





Exhibit\_4

Document - WordPad

File Edit View Insert Format Help

Courier New 12 Wsstein

```
N5K1# show interface fc2/1
fc2/1 is down (Isolation due to zone merge failure)

N5K1# configure
Enter configuration commands, one per line.  End with CNIL/Z.
N5K1(config)# interface fc2/1
N5K1(config-if)# shutdown
N5K1(config-if)# no shutdown
N5K1(config-if)#

2012 Sep 28 14:43:04 N5K1 %$ VDC-1 %$ %ZONE-2-ZS_MERGE_FULL_DATABASE_MISMATCH: %
$VSAN 11$$ Zone merge full database mismatch on interface fc2/1
2012 Sep 28 14:43:04 N5K1 %$ VDC-1 %$ %ZONE-2-ZS_MERGE_FAILED: %$VSAN 11$$ Zone
merge failure, isolating interface fc2/1 reason: Member mismatch:[reason:0]
```

For Help, press F1

Hot Area:

Questions X

1 Review the screenshot the customer emailed to you in the tab **Exhibit\_2**.

2

3 You are viewing the vHBA definition for interface fc0 connected to Fabric A. Which two items are not configured correctly? (Choose two.)

4

- The WWPN should always begin with 50 in the first byte to signify it is an FCoE initiator.
- According to T11 standard FC-BB-5, the first 4 bytes of an FCoE WWNN and WWPN must be unique from each other.
- The FC SAN Boot checkbox must be selected.
- Beginning with VMware ESXi 5.0, the Enable Persistent LUN Binding option must be checked.
- The default VLAN should be set as the FCoE VLAN.
- FCoE boot interfaces must be set to PCIe Device Order 0.

**Correct Answer:**

Questions X

1 Review the screenshot the customer emailed to you in the tab **Exhibit\_2**.

2

3 You are viewing the vHBA definition for interface fc0 connected to Fabric A. Which two items are not configured correctly? (Choose two.)

4

- The WWPN should always begin with 50 in the first byte to signify it is an FCoE initiator.
- According to T11 standard FC-BB-5, the first 4 bytes of an FCoE WWNN and WWPN must be unique from each other.
- The FC SAN Boot checkbox must be selected.
- Beginning with VMware ESXi 5.0, the Enable Persistent LUN Binding option must be checked.
- The default VLAN should be set as the FCoE VLAN.
- FCoE boot interfaces must be set to PCIe Device Order 0.

Section: (none)

Explanation

Explanation/Reference:

### QUESTION 37

Instructions ✕

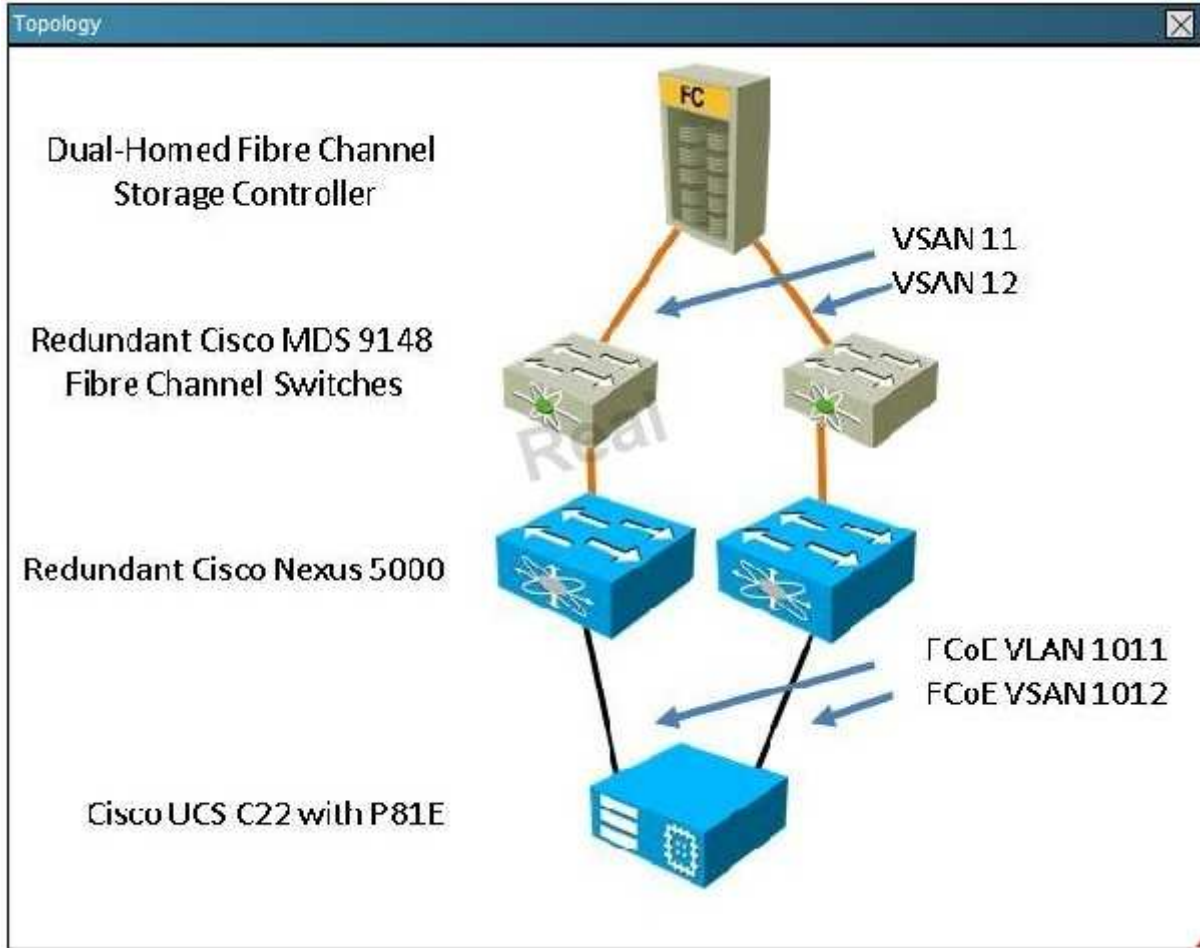
- **THIS TASK DOES NOT REQUIRE DEVICE CONFIGURATION.**
- **Before beginning the questions, carefully read the information in the Scenario tab and familiarize yourself with the network topology.**
- To access the multiple-choice questions, click on the numbered boxes on the left of the top panel.
- There are **four** multiple-choice questions with this task. Be sure to answer all four questions before clicking the Next button.
- Use the tabs at the bottom of the question to navigate between the Topology and question-specific Exhibits. Exhibit\_1 maps to Question 1, et cetera.

Scenario ✕

You have received a trouble ticket from a customer with multiple FCoE issues deploying a Cisco UCS C22 M2 server. The server includes a Cisco UCS P81E VIC that has redundant connections to Cisco Nexus 5548 switches.

When the customer loads the installer for VMware ESXi 5.0, it is unable to connect to its boot LUN over Fabric A or Fabric B. To begin, you will concentrate your efforts on achieving connectivity on Fabric A.

The customer is a government agency with an information security policy prohibiting remote access into its network. It has provided a topology, command output from the Nexus 5548, and screenshots from the Cisco Integrated Management Controller of symptoms for you to troubleshoot.



Exhibit\_1

192.168.10.45 - KVM Console

File View Macros Tools Help

KVM VM

```
Initializing Intel(R) Boot Agent GE v1.3.35
PXE 2.1 Build 087 (WfM 2.0)

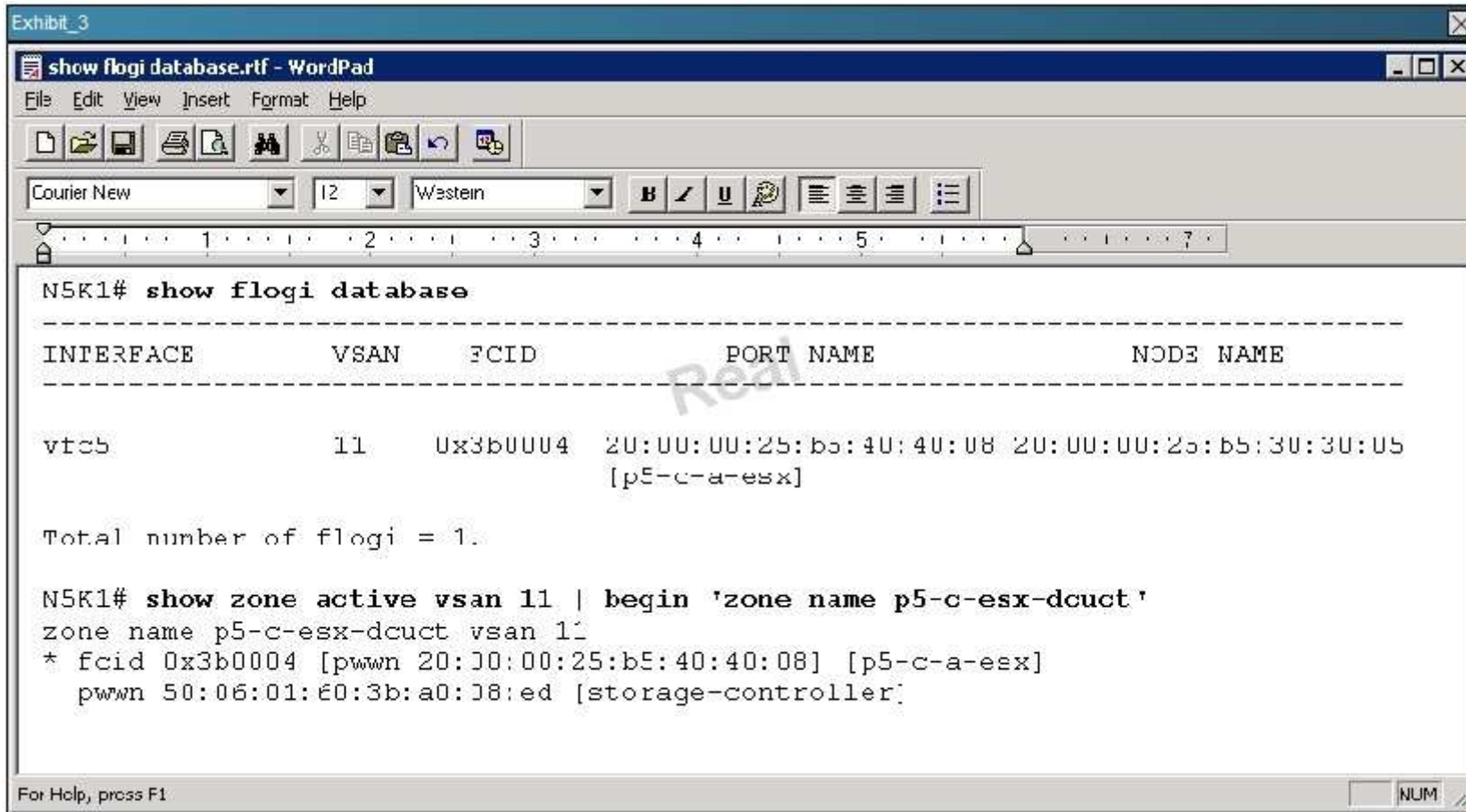
Cisco VIC FC, Boot Driver Version 2.0(2i)
(C) 2010 Cisco Systems, Inc.

Cisco VIC FC, Boot Driver Version 2.0(2i)
(C) 2010 Cisco Systems, Inc.

LSI MegaRAID SAS-MFI BIOS
Version 3.24.00 (Build October 26, 2011)
Copyright(c) 2011 LSI Corporation
HA -0 (Bus 18 Dev 0) LSI MegaRAID SAS 9260-4i
FW package: 12.12.0-0087
```







Exhibit\_4

Document - WordPad

File Edit View Insert Format Help

Courier New 12 Wsstein

```
N5K1# show interface fc2/1
fc2/1 is down (Isolation due to zone merge failure)

N5K1# configure
Enter configuration commands, one per line.  End with CNIL/Z.
N5K1(config)# interface fc2/1
N5K1(config-if)# shutdown
N5K1(config-if)# no shutdown
N5K1(config-if)#

2012 Sep 28 14:43:04 N5K1 %$ VDC-1 %$ %ZONE-2-ZS_MERGE_FULL_DATABASE_MISMATCH: %
$VSAN 11$$ Zone merge full database mismatch on interface fc2/1
2012 Sep 28 14:43:04 N5K1 %$ VDC-1 %$ %ZONE-2-ZS_MERGE_FAILED: %$VSAN 11$$ Zone
merge failure, isolating interface fc2/1 reason: Member mismatch:[reason:0]
```

For Help, press F1

Hot Area:

Questions

- 1 Review the screenshot that the customer emailed to you in the tab Exhibit\_3.
- 2
- 3 Based on the command output that is supplied, which two selections are true? (Choose two.)
- 4

- The host p5-c-a-esx is currently logged into the switch fabric.
- The host Storage-Controller is zoned correctly.
- The host Storage-Controller is not reachable.
- The host Storage-Controller is not zoned correctly.
- The WWNN for host p5-c-a-esx is correctly zoned with the host Storage-Controller.

Correct Answer:

Questions

- 1 Review the screenshot that the customer emailed to you in the tab Exhibit\_3.
- 2
- 3 Based on the command output that is supplied, which two selections are true? (Choose two.)
- 4

- The host p5-c-a-esx is currently logged into the switch fabric.
- The host Storage-Controller is zoned correctly.
- The host Storage-Controller is not reachable.
- The host Storage-Controller is not zoned correctly.
- The WWNN for host p5-c-a-esx is correctly zoned with the host Storage-Controller.

Section: (none)

Explanation

Explanation/Reference:

QUESTION 38

#### Instructions

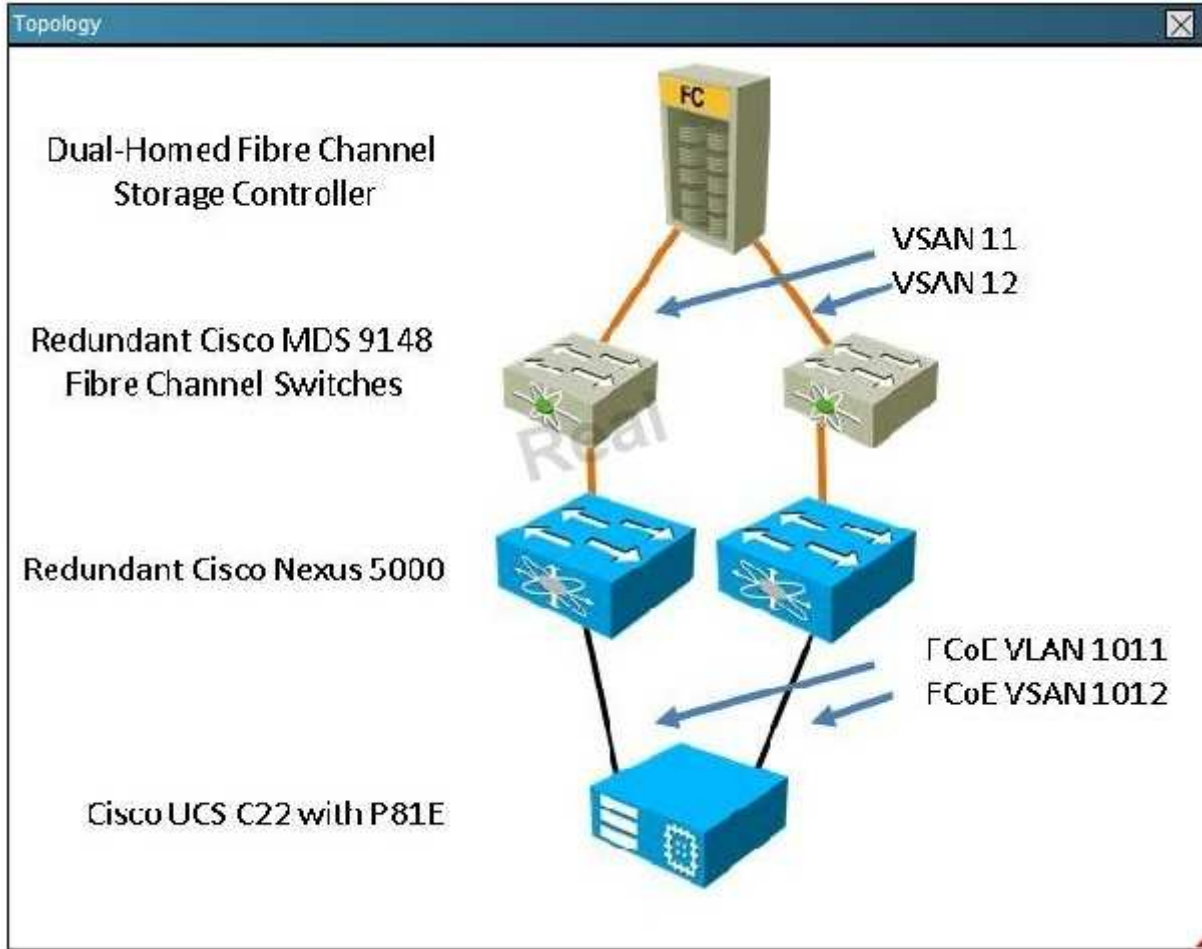
- **THIS TASK DOES NOT REQUIRE DEVICE CONFIGURATION.**
- **Before beginning the questions, carefully read the information in the Scenario tab and familiarize yourself with the network topology.**
- To access the multiple-choice questions, click on the numbered boxes on the left of the top panel.
- There are **four** multiple-choice questions with this task. Be sure to answer all four questions before clicking the Next button.
- Use the tabs at the bottom of the question to navigate between the Topology and question-specific Exhibits. Exhibit\_1 maps to Question 1, et cetera.

#### Scenario

You have received a trouble ticket from a customer with multiple FCoE issues deploying a Cisco UCS C22 M2 server. The server includes a Cisco UCS P81E VIC that has redundant connections to Cisco Nexus 5548 switches.

When the customer loads the installer for VMware ESXi 5.0, it is unable to connect to its boot LUN over Fabric A or Fabric B. To begin, you will concentrate your efforts on achieving connectivity on Fabric A.

The customer is a government agency with an information security policy prohibiting remote access into its network. It has provided a topology, command output from the Nexus 5548, and screenshots from the Cisco Integrated Management Controller of symptoms for you to troubleshoot.



Exhibit\_1

192.168.10.45 - KVM Console

File View Macros Tools Help

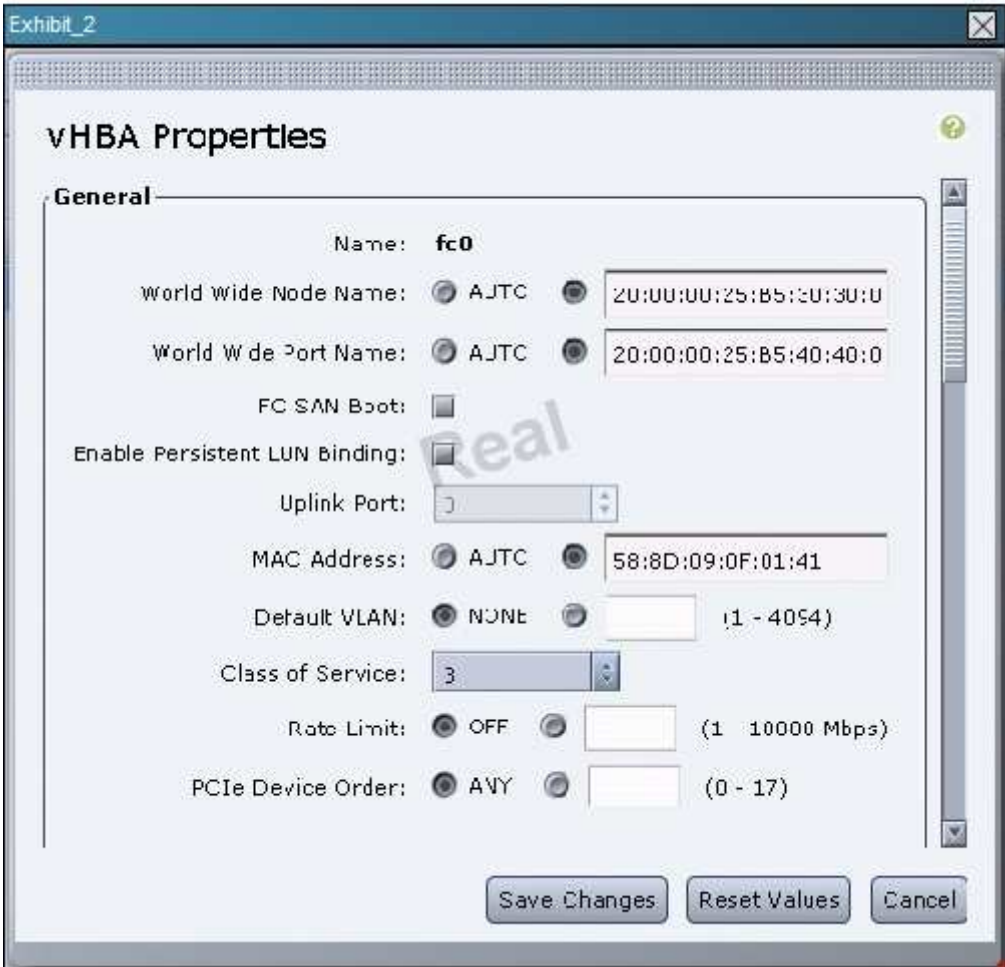
KVM VM

```
Initializing Intel(R) Boot Agent GE v1.3.35
PXE 2.1 Build 087 (WfM 2.0)

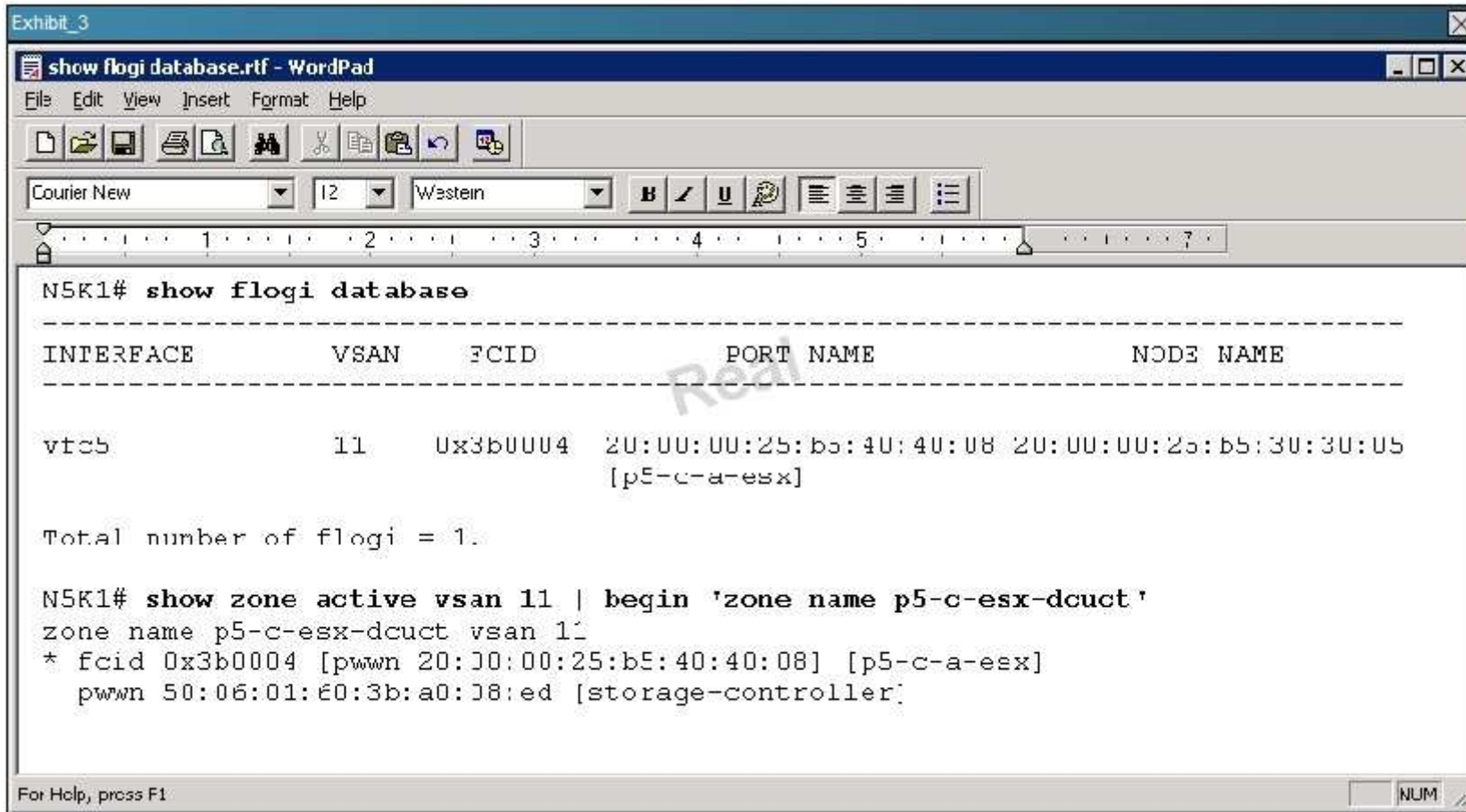
Cisco VIC FC, Boot Driver Version 2.0(2i)
(C) 2010 Cisco Systems, Inc.

Cisco VIC FC, Boot Driver Version 2.0(2i)
(C) 2010 Cisco Systems, Inc.

LSI MegaRAID SAS-MFI BIOS
Version 3.24.00 (Build October 26, 2011)
Copyright(c) 2011 LSI Corporation
HA -0 (Bus 18 Dev 0) LSI MegaRAID SAS 9260-4i
FW package: 12.12.0-0087
```







Exhibit\_4

Document - WordPad

File Edit View Insert Format Help

Courier New 12 Wsstein

```
N5K1# show interface fc2/1
fc2/1 is down (Isolation due to zone merge failure)

N5K1# configure
Enter configuration commands, one per line.  End with CNIL/Z.
N5K1(config)# interface fc2/1
N5K1(config-if)# shutdown
N5K1(config-if)# no shutdown
N5K1(config-if)#

2012 Sep 28 14:43:04 N5K1 %$ VDC-1 %$ %ZONE-2-ZS_MERGE_FULL_DATABASE_MISMATCH: %
$VSAN 11$$ Zone merge full database mismatch on interface fc2/1
2012 Sep 28 14:43:04 N5K1 %$ VDC-1 %$ %ZONE-2-ZS_MERGE_FAILED: %$VSAN 11$$ Zone
merge failure, isolating interface fc2/1 reason: Member mismatch:[reason:0]
```

For Help, press F1

Hot Area:

## Questions

1 Per your request, the customer has sent you the output of the **show interface fc2/1**  
2 command for the Fibre Channel interface connecting the Cisco Nexus 5548 to the Cisco  
3 MDS 9124 Fibre Channel switch.

4 The interface is isolated (down), so you ask the customer to perform a **shutdown** and  
**no shutdown** on interface fc2/1. After reviewing the error message in **Exhibit\_4**,  
which action will resolve the issue?

Issue these commands on the Cisco Nexus 5548:

```
N5K1 (config)# zoneset database  
N5K1 (config-zone-db)# vsan 11  
N5K1 (config-zone-vsan-db)# import all
```

Issue this command in the Cisco Nexus 5548:

```
N5K1# zoneset import interface fc2/1 vsan 11
```

Issue these commands in the Cisco Nexus 5548:

```
N5K1#(config) zone database  
N5K1#(config-zone-db) import zone set vsan 11 all
```

Issue these commands on the Cisco Nexus 5548:

```
N5K1#(config) interface fc2/1  
N5K1#(config-if) zoneset import vsan 11
```

Issue these commands on the Cisco Nexus 5548:

```
N5K1 (config)# vsan database  
N5K1 (config-vsan-db)# vsan 11  
N5K1 (config-vsan-db)# import zone set interface fc2/1
```

**Correct Answer:**

## Questions

1 Per your request, the customer has sent you the output of the **show interface fc2/1**  
2 command for the Fibre Channel interface connecting the Cisco Nexus 5548 to the Cisco  
3 MDS 9124 Fibre Channel switch.

4 The interface is isolated (down), so you ask the customer to perform a **shutdown** and  
**no shutdown** on interface fc2/1. After reviewing the error message in **Exhibit\_4**,  
which action will resolve the issue?

Issue these commands on the Cisco Nexus 5548:

```
N5K1 (config)# zoneset database  
N5K1 (config-zone-db)# vsan 11  
N5K1 (config-zone-vsan-db)# import all
```

Issue this command in the Cisco Nexus 5548:

```
N5K1# zoneset import interface fc2/1 vsan 11
```

Issue these commands in the Cisco Nexus 5548:

```
N5K1#(config) zone database  
N5K1#(config-zone-db) import zone set vsan 11 all
```

Issue these commands on the Cisco Nexus 5548:

```
N5K1#(config) interface fc2/1  
N5K1#(config-if) zoneset import vsan 11
```

Issue these commands on the Cisco Nexus 5548:

```
N5K1 (config)# vsan database  
N5K1 (config-vsan-db)# vsan 11  
N5K1 (config-vsan-db)# import zone set interface fc2/1
```

**Section: (none)**

**Explanation**

**Explanation/Reference:**

### QUESTION 39

A customer is troubleshooting degraded DIMM errors on a Cisco UCS blade server and would like to reset the BMC. What is the correct command sequence to reset the BMC?

- A. UCS1-A# server x/y  
UCS1-A /chassis/server # scope bmc  
UCS1-A /chassis/server/bmc # reset  
UCS1-A /chassis/server/bmc\* # commit-buffer
- B. UCS1-A# server scope  
UCS1-A /chassis/server # scope bmc  
UCS1-A /chassis/server/bmc # reset  
UCS1-A /chassis/server/bmc\* # commit-buffer
- C. UCS1-A# scope server x/y  
UCS1-A /chassis/server # scope bmc  
UCS1-A /chassis/server/bmc # reset  
UCS1-A /chassis/server/bmc\* # commit-buffer
- D. UCS1-A# scope server x/y  
UCS1-A /chassis/server # scope bmc  
UCS1-A /chassis/server/bmc\* # commit-buffer

**Correct Answer: C**

**Section: (none)**

**Explanation**

**Explanation/Reference:**

Explanation:

**QUESTION 40**

Which commands can you enter to see if a component in the Cisco UCS domain generated a core file?

- A. 6100-A# scope monitoring  
6100-A /monitoring # scope sysdebug  
6100-A /monitoring/sysdebug # show cores  
Core Files:  
Name Fabric ID  
-----
- B. 6100-A# scope sysdebug  
6100-A /sysdebug # scope monitoring  
6100-A /sysdebug/monitoring # show cores  
Core Files:  
Name Fabric ID  
-----

- C. 6100-A# scope system  
6100-A /system # scope monitoring  
6100-A /system/monitoring # show cores  
Core Files:  
Name Fabric ID  
-----
- D. 6100-A# scope cores  
6100-A /cores # show cores  
Core Files:  
Name Fabric ID  
-----
- E. 6100-A# scope logging  
6100-A /logging # scope monitoring  
6100-A /logging/monitoring # show cores  
Core Files:  
Name Fabric ID  
-----

**Correct Answer:** A

**Section:** (none)

**Explanation**

**Explanation/Reference:**

real answer.

**QUESTION 41**

Which four tech support files can you create with the Cisco UCS Manager that you can submit to Cisco TAC for support? (Choose four.)

- A. UCSM
- B. disk LUNs
- C. fabric extender
- D. memory
- E. rack server
- F. chassis
- G. server cache

**Correct Answer:** ACEF

**Section:** (none)

**Explanation**

**Explanation/Reference:**

answer is to the point.

**QUESTION 42**

Which protocols can be used to send to Cisco TAC (Technical Assistance Center) the show tech- support command output information about the Cisco UCS domain? (Choose two.)

- A. TFTP
- B. FTP
- C. SCP
- D. Telnet
- E. SecureTelnet

**Correct Answer:** BC

**Section:** (none)

**Explanation**

**Explanation/Reference:**

Explanation:

**QUESTION 43**

The Cisco UCS Manager displays FSM information for which four of these? (Choose four.)

- A. which FSM task is being executed
- B. the current state of an FSM task
- C. the status of the previous FSM task
- D. any error codes returned while processing
- E. all completed FSM tasks
- F. multiple FSM tasks that completed over multiple tries
- G. multiple FSM tasks that failed

**Correct Answer:** ABCD

**Section:** (none)

**Explanation**

**Explanation/Reference:**

reliable answer.

**QUESTION 44**

How will the Cisco UCS Manager react when all of the FSM tasks fail?

- A. retries for 60 seconds
- B. raises faults and alarms
- C. restarts from the previous known good task
- D. sends an NOC SNMP trap email

**Correct Answer:** B

**Section:** (none)

**Explanation**

**Explanation/Reference:**

Explanation:

**QUESTION 45**

What should you do when you see faults during the initial setup and discovery process?

- A. Take note and address the faults.
- B. You can safely ignore these faults.
- C. Log them and try to address the first one.
- D. Reboot until the error messages go away.

**Correct Answer:** B

**Section:** (none)

**Explanation**

**Explanation/Reference:**

Explanation:

**QUESTION 46**



Instructions ✕

- THIS TASK DOES NOT REQUIRE DEVICE CONFIGURATION.
- Before beginning the questions, carefully read the information in the Scenario tab and familiarize yourself with the network topology.
- To access the multiple-choice questions, click on the numbered boxes on the left of the top panel.
- There are four multiple-choice questions with this task. Be sure to answer all four questions before clicking the Next button.
- Use the tabs at the bottom of the question to navigate between the Topology and question-specific Exhibits. Exhibit\_1 maps to Question 1, and so on.

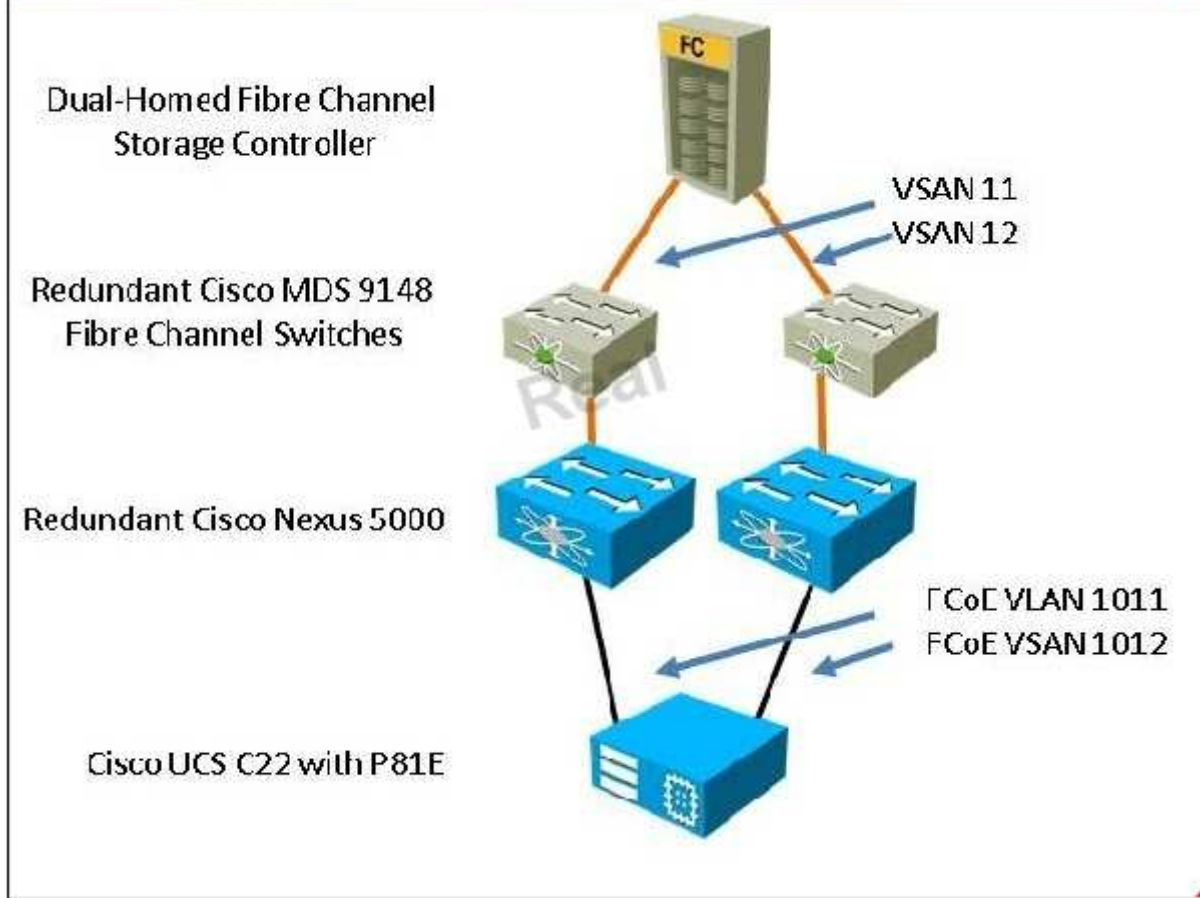
Real

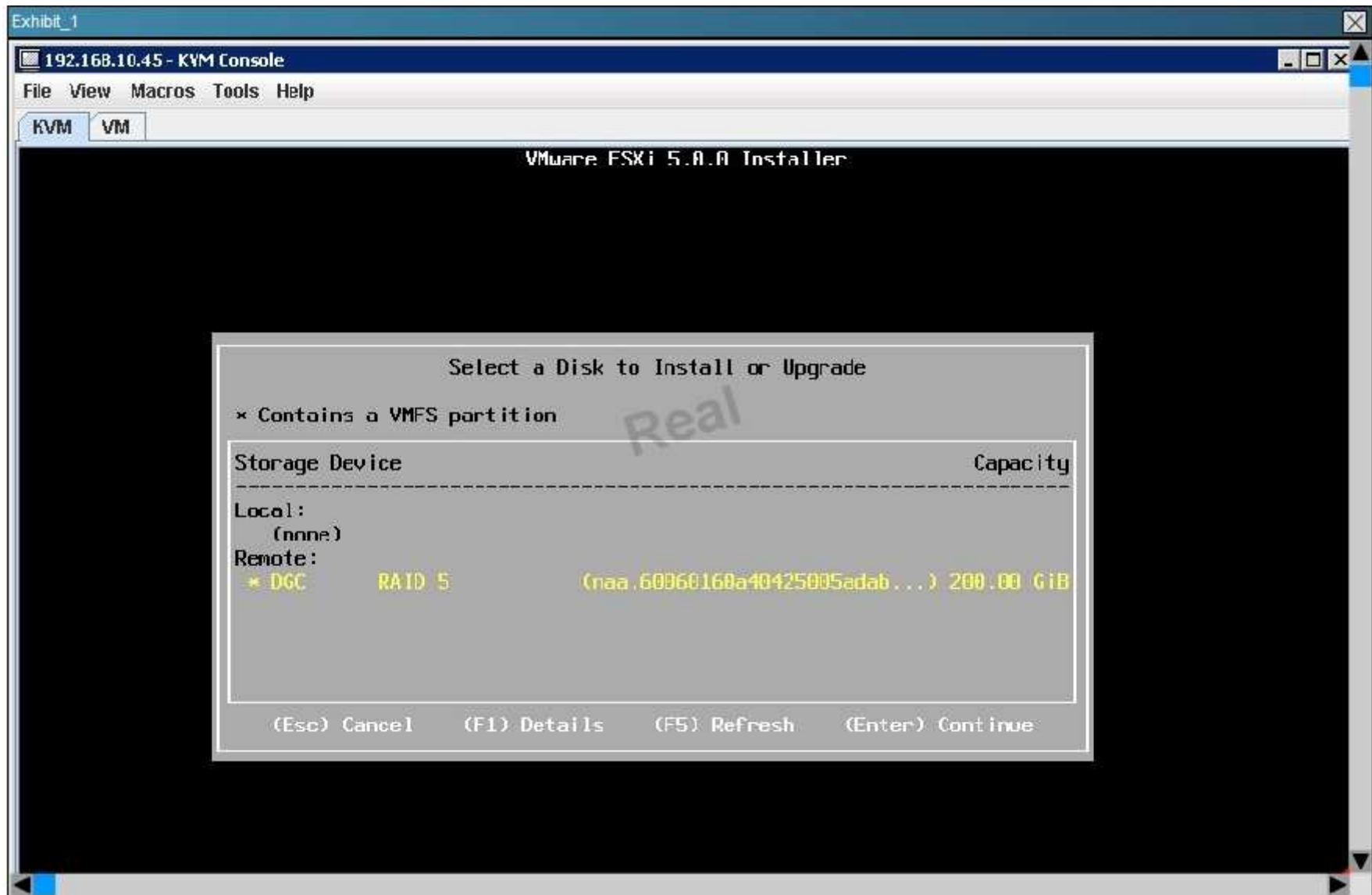
Scenario ✕

Your customer has purchased a Cisco UCS C22 M2 server equipped with an LSI MegaRAID 9260-4i, four SAS hard drives, and a Cisco UCS P81E VIC.

Because Fibre Channel storage is at a premium at this data center, the customer decides to boot VMware ESXi 5.0 from local storage and attach to the VMs on a VMFS LUN on a Fibre Channel storage controller with a large RAID array.

The customer is encountering issues connecting to local storage, and you are called on-site to get the server into production.



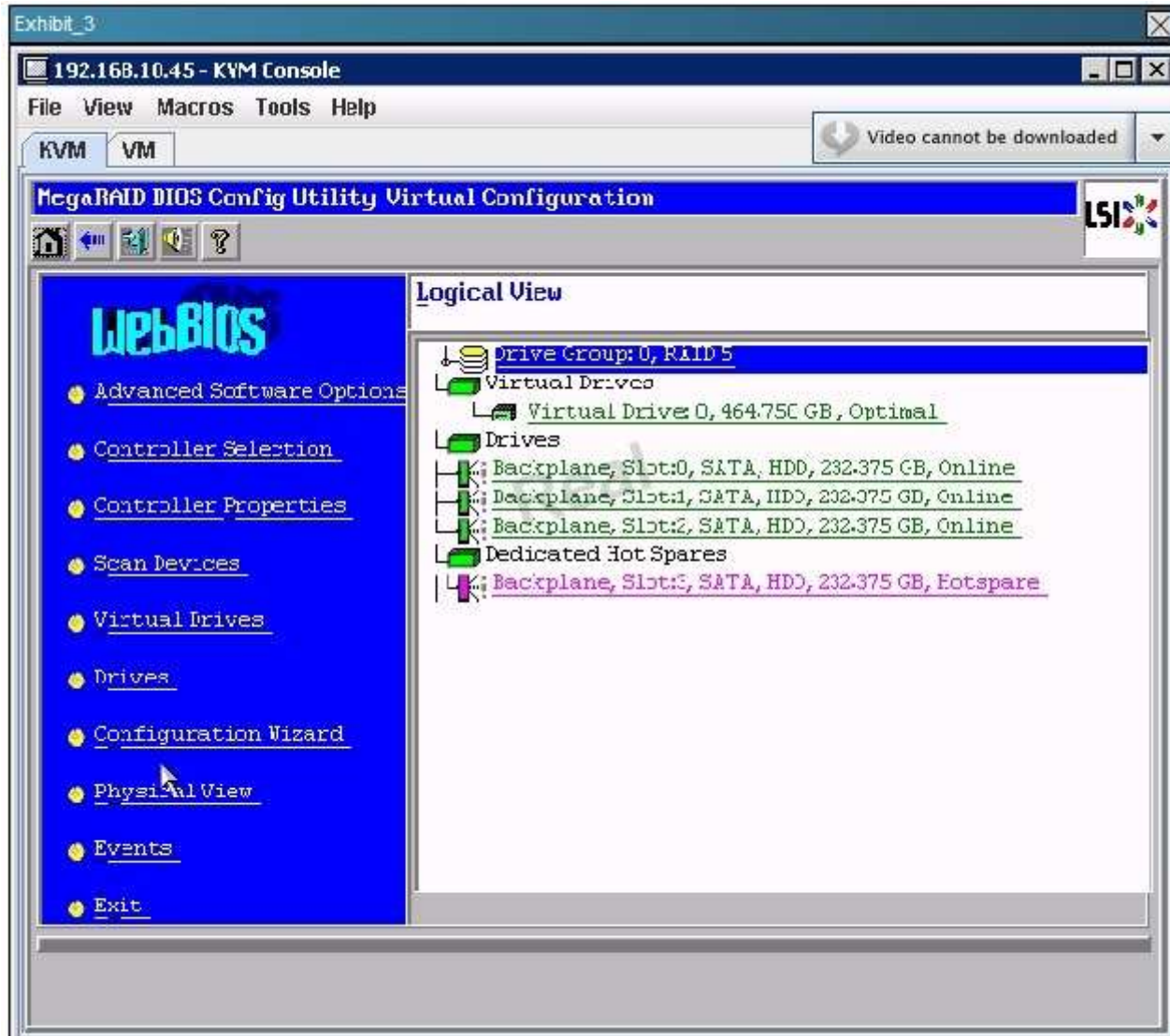


```
Exhibit_2
192.168.10.45 - KVM Console
File View Macros Tools Help
KVM VM
Battery Status: Not present

PCI SLOT ID LUN VENDOR PRODUCT REVISION CAPACITY
-----
4 LSI LSI MegaRAID SAS 9260-4i 2.120.233-147 512MB
4 13 0 ATA ST3250310NS CC06 238475MB
4 14 0 ATA ST3250310NS CC06 238475MB
4 15 0 ATA ST3250310NS CC06 238475MB
1 16 0 ATA ST3250310NS CC06 238475MB

0 Virtual Drive(s) found on the host adapter.

0 Virtual Drive(s) handled by BIOS
Press <Ctrl><H> for WebBIOS or press <Ctrl><Y> for Preboot CLI _
```



```
Exhibit_4
192.168.10.45 - KVM Console
File View Macros Tools Help
KVM VM
Battery Status: Not present

PCI SLOT ID LUN VENDOR PRODUCT REVISION CAPACITY
-----
4 LSI LSI MegaRAID SAS 9260-4i 2.120.233-147 512MB
4 13 0 ATA ST3250310NS CC06 238475MB
4 14 0 ATA ST3250310NS CC06 238475MB
4 15 0 ATA ST3250310NS CC06 238475MB
1 16 0 ATA ST3250310NS CC06 238475MB
4 0 LSI Virtual Drive RAID5 475904MB

1 Virtual Drive(s) found on the host adapter.

1 Virtual Drive(s) handled by BIOS
Press <Ctrl><H> for WebBIOS or press <Ctrl><Y> for Preboot CLI
```

Hot Area:

Questions

1 You connect to the Cisco IMC and map virtual media to the VMware ESXi ISO file and  
2 successfully boot the installer.  
3  
4 However, refer to **Exhibit\_1** and examine the installer screen. When the installer scans  
the bus for storage, only the 200-GB VMFS volume on the Fibre Channel LUN is present.  
No local storage can be accessed by the ESXi installer on the LSI MegaRAID 9260-4i.

Which of these is the most likely explanation for this issue?

The LSI 9260-4i driver needs to be slip-streamed into the installer ISO.  
 The LSI 9260-4i is not on the VMware Hardware Compatibility Guide.  
 The LSI 9260-4i is defective.  
 The LSI 9260-4i is misconfigured.

Correct Answer:

Questions

1 You connect to the Cisco IMC and map virtual media to the VMware ESXi ISO file and  
2 successfully boot the installer.  
3  
4 However, refer to **Exhibit\_1** and examine the installer screen. When the installer scans  
the bus for storage, only the 200-GB VMFS volume on the Fibre Channel LUN is present.  
No local storage can be accessed by the ESXi installer on the LSI MegaRAID 9260-4i.

Which of these is the most likely explanation for this issue?

The LSI 9260-4i driver needs to be slip-streamed into the installer ISO.  
 The LSI 9260-4i is not on the VMware Hardware Compatibility Guide.  
 The LSI 9260-4i is defective.  
 The LSI 9260-4i is misconfigured.

Section: (none)

Explanation

Explanation/Reference:

## QUESTION 47

Instructions

- THIS TASK DOES NOT REQUIRE DEVICE CONFIGURATION.
- Before beginning the questions, carefully read the information in the Scenario tab and familiarize yourself with the network topology.
- To access the multiple-choice questions, click on the numbered boxes on the left of the top panel.
- There are four multiple-choice questions with this task. Be sure to answer all four questions before clicking the Next button.
- Use the tabs at the bottom of the question to navigate between the Topology and question-specific Exhibits. Exhibit\_1 maps to Question 1, and so on.

Scenario

Your customer has purchased a Cisco UCS C22 M2 server equipped with an LSI MegaRAID 9260-4i, four SAS hard drives, and a Cisco UCS P81E VIC.

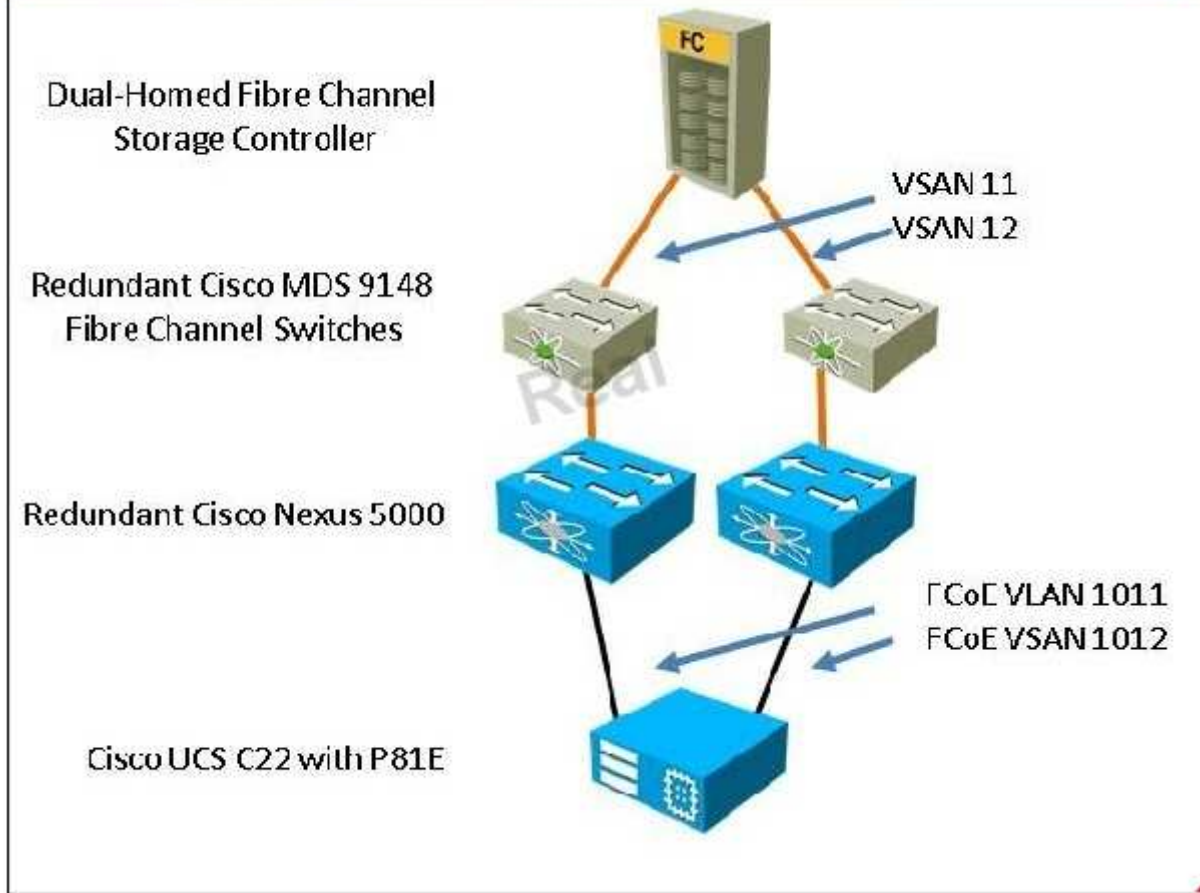
Because Fibre Channel storage is at a premium at this data center, the customer decides to boot VMware ESXi 5.0 from local storage and attach to the VMs on a VMFS LUN on a Fibre Channel storage controller with a large RAID array.

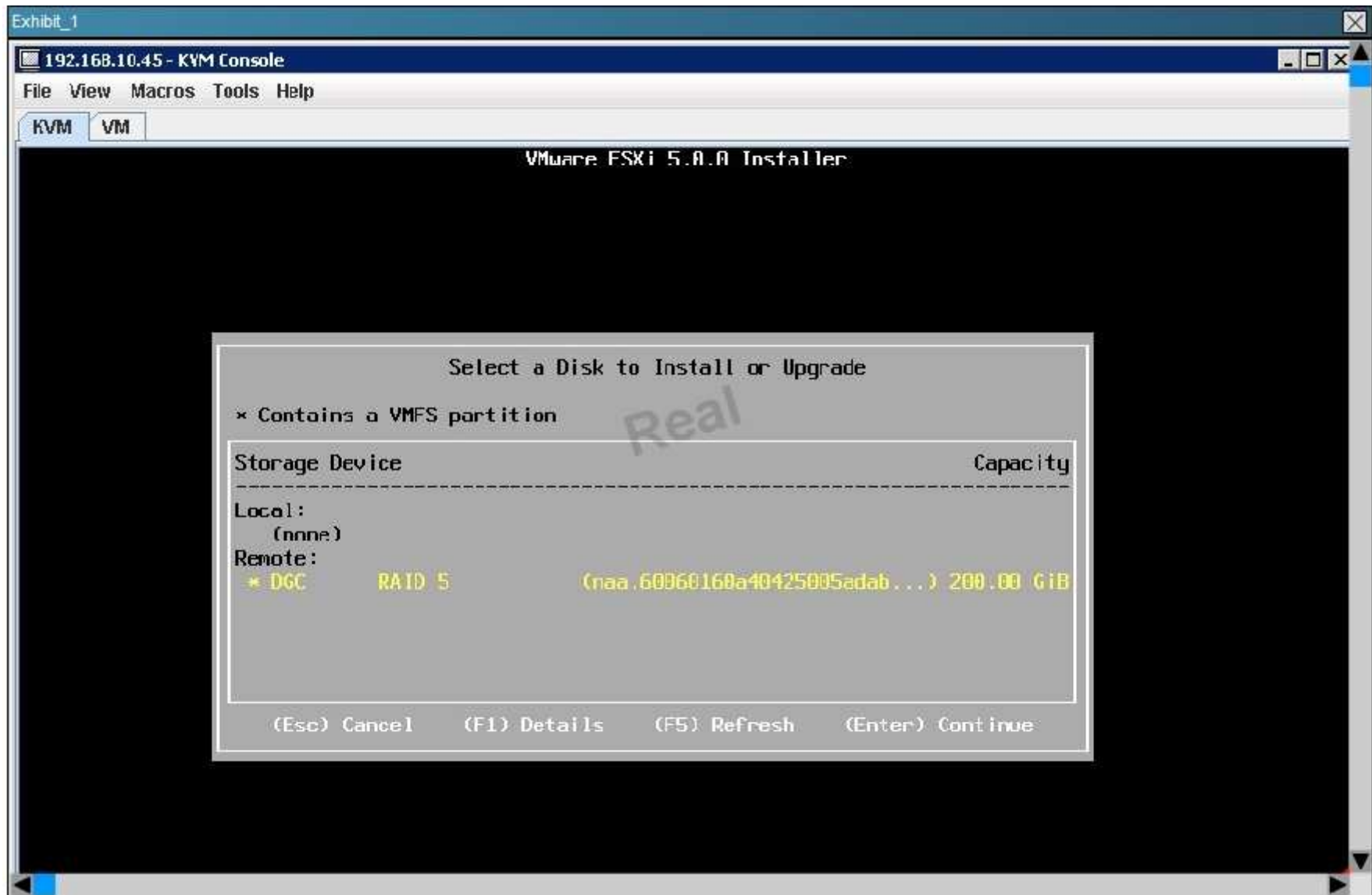
The customer is encountering issues connecting to local storage, and you are called on-site to get the server into production.



<http://www.gratisexam.com/>





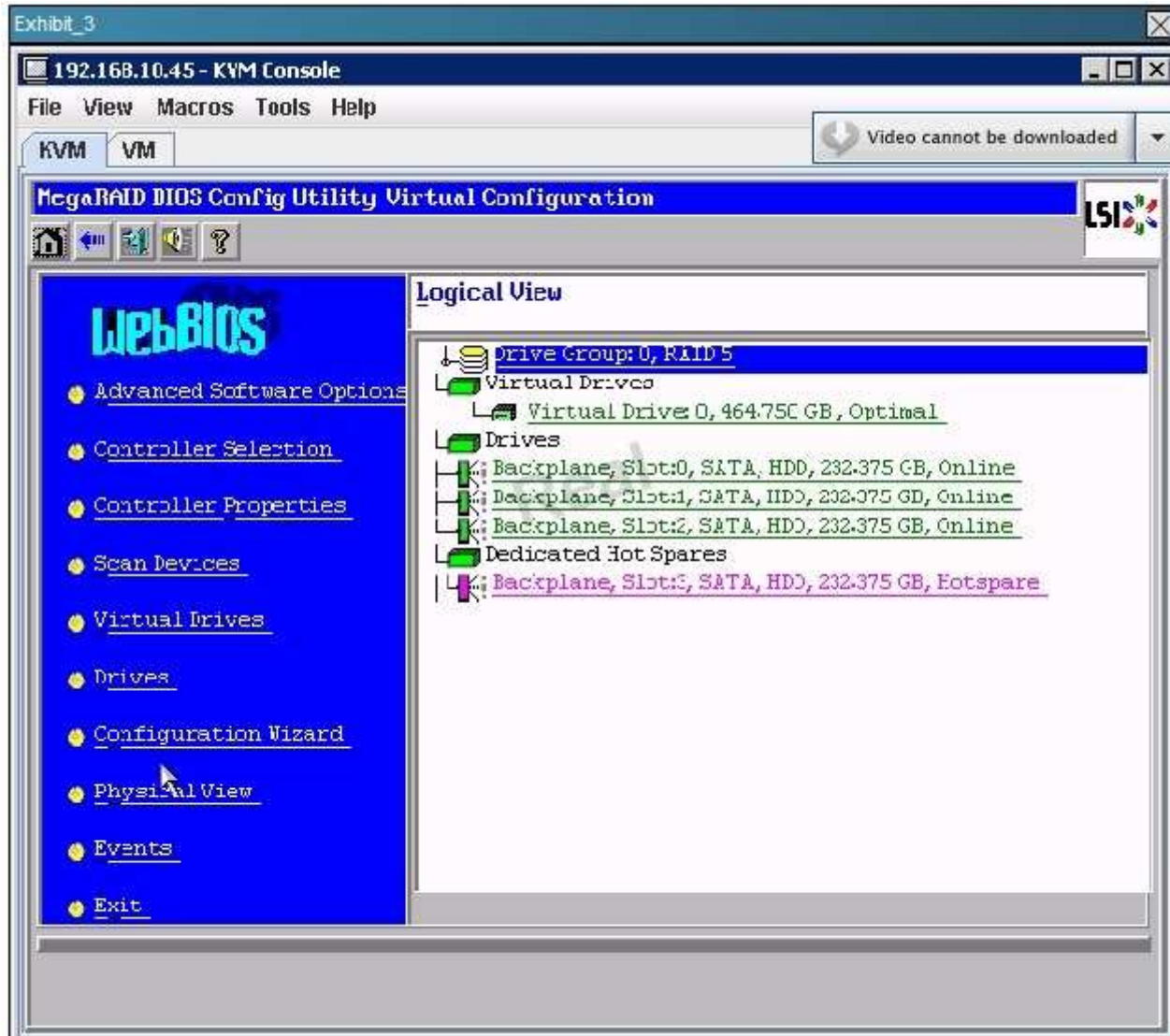


```
Exhibit_2
192.168.10.45 - KVM Console
File View Macros Tools Help
KVM VM
Battery Status: Not present

PCI SLOT ID LUN VENDOR PRODUCT REVISION CAPACITY
-----
4 LSI LSI MegaRAID SAS 9260-4i 2.120.233-147 512MB
4 13 0 ATA ST3250310NS CC06 238475MB
4 14 0 ATA ST3250310NS CC06 238475MB
4 15 0 ATA ST3250310NS CC06 238475MB
1 16 0 ATA ST3250310NS CC06 238475MB

0 Virtual Drive(s) found on the host adapter.

0 Virtual Drive(s) handled by BIOS
Press <Ctrl><H> for WebBIOS or press <Ctrl><Y> for Preboot CLI _
```



```
Exhibit_4
192.168.10.45 - KVM Console
File View Macros Tools Help
KVM VM
Battery Status: Not present

PCI SLOT ID LUN VENDOR PRODUCT REVISION CAPACITY
-----
4 LSI LSI MegaRAID SAS 9260-4i 2.120.233-147 512MB
4 13 0 ATA ST3250310NS CC06 238475MB
4 14 0 ATA ST3250310NS CC06 238475MB
4 15 0 ATA ST3250310NS CC06 238475MB
1 16 0 ATA ST3250310NS CC06 238475MB
4 0 LSI Virtual Drive RAID5 475904MB

1 Virtual Drive(s) found on the host adapter.

1 Virtual Drive(s) handled by BIOS
Press <Ctrl><H> for WebBIOS or press <Ctrl><Y> for Preboot CLI
```

Hot Area:

Questions

1 You have rebooted the server several times and loaded the VMware ESXi installer, but there is still no local boot device.

2

3 Refer to Exhibit\_2 and examine the message that occurs each time during POST.

4

How is the controller currently configured?

- With four disks installed, the LSI MegaRAID 9260i defaults to RAID 6 for maximum fault tolerance.
- With four disks installed, the LSI MegaRAID 9260i defaults to RAID 5 for fault tolerance and higher capacity.
- With four disks installed, the LSI MegaRAID 9260i defaults to RAID 10 for fault tolerance and maximum I/O performance.
- With four disks installed, the LSI MegaRAID 9260i defaults to no fault-tolerant configuration.

Correct Answer:

Questions

1 You have rebooted the server several times and loaded the VMware ESXi installer, but there is still no local boot device.

2

3 Refer to Exhibit\_2 and examine the message that occurs each time during POST.

4

How is the controller currently configured?

- With four disks installed, the LSI MegaRAID 9260i defaults to RAID 6 for maximum fault tolerance.
- With four disks installed, the LSI MegaRAID 9260i defaults to RAID 5 for fault tolerance and higher capacity.
- With four disks installed, the LSI MegaRAID 9260i defaults to RAID 10 for fault tolerance and maximum I/O performance.
- With four disks installed, the LSI MegaRAID 9260i defaults to no fault-tolerant configuration.

Section: (none)  
Explanation

## Explanation/Reference:

### QUESTION 48

Instructions

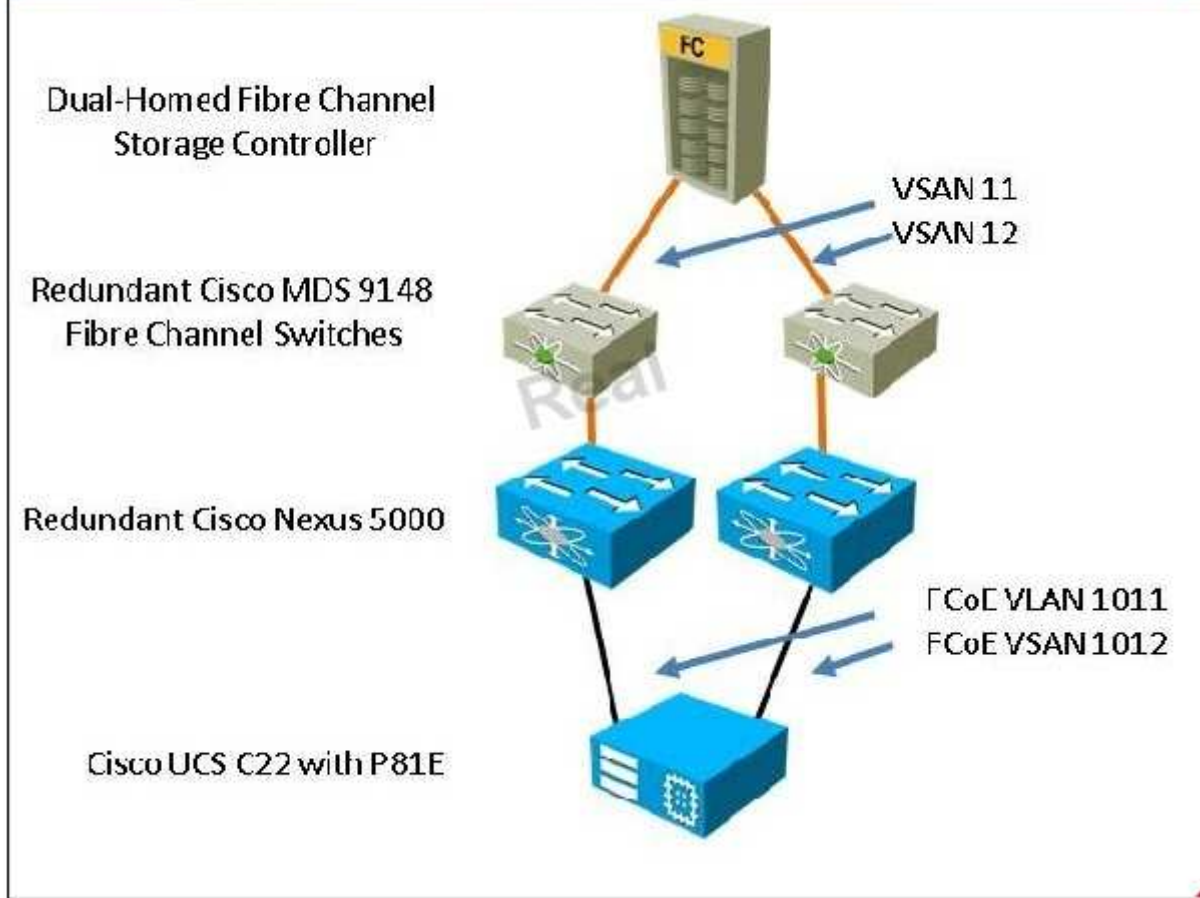
- THIS TASK DOES NOT REQUIRE DEVICE CONFIGURATION.
- Before beginning the questions, carefully read the information in the Scenario tab and familiarize yourself with the network topology.
- To access the multiple-choice questions, click on the numbered boxes on the left of the top panel.
- There are four multiple-choice questions with this task. Be sure to answer all four questions before clicking the Next button.
- Use the tabs at the bottom of the question to navigate between the Topology and question-specific Exhibits. Exhibit\_1 maps to Question 1, and so on.

Scenario

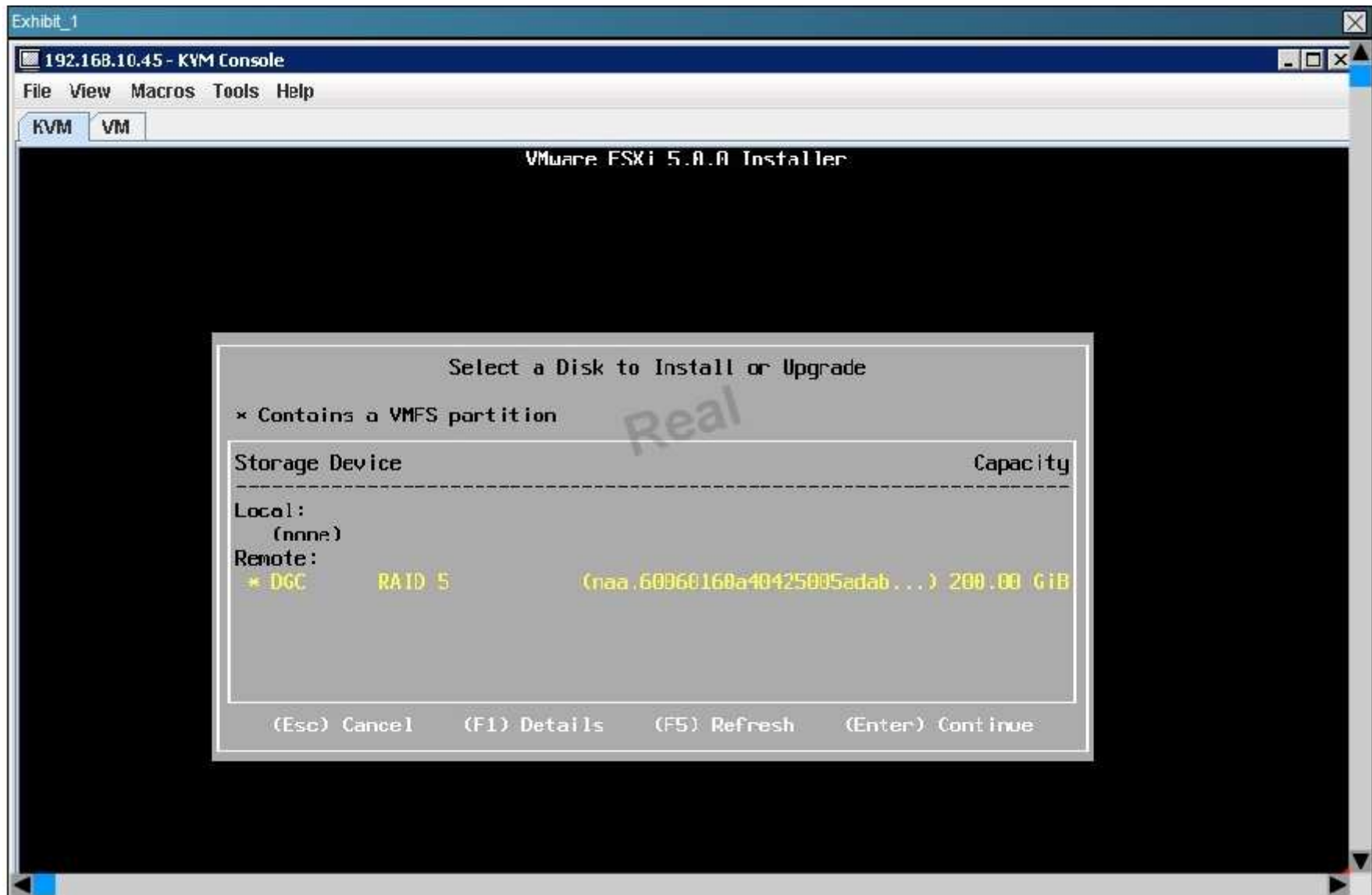
Your customer has purchased a Cisco UCS C22 M2 server equipped with an LSI MegaRAID 9260-4i, four SAS hard drives, and a Cisco UCS P81E VIC.

Because Fibre Channel storage is at a premium at this data center, the customer decides to boot VMware ESXi 5.0 from local storage and attach to the VMs on a VMFS LUN on a Fibre Channel storage controller with a large RAID array.

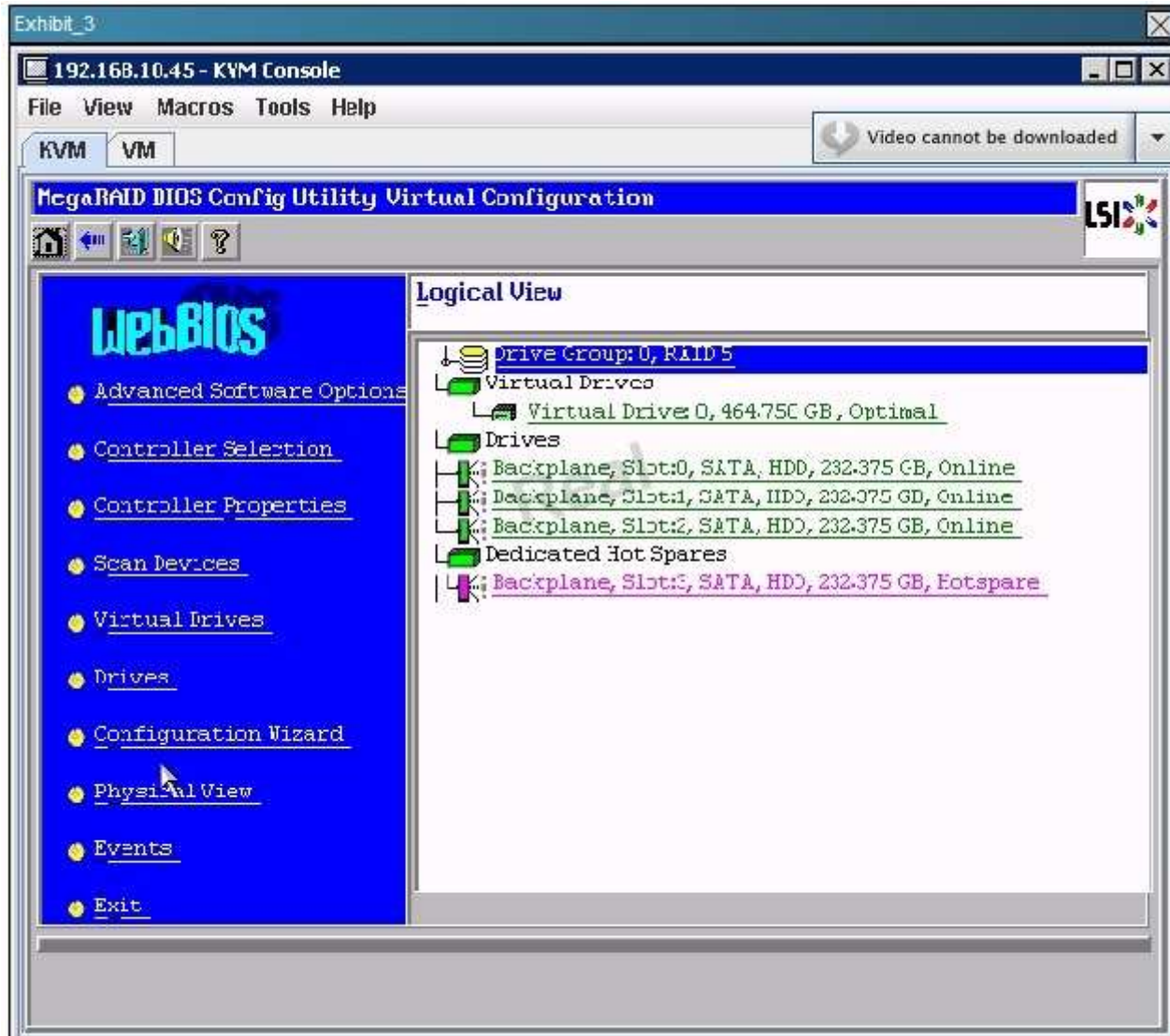
The customer is encountering issues connecting to local storage, and you are called on-site to get the server into production.







```
Exhibit_2
192.168.10.45 - KVM Console
File View Macros Tools Help
KVM VM
Battery Status: Not present
PCI SLOT ID LUN VENDOR PRODUCT REVISION CAPACITY
-----
4 LSI LSI MegaRAID SAS 9260-4i 2.120.233-147 512MB
4 13 0 ATA ST3250310NS CC06 238475MB
4 14 0 ATA ST3250310NS CC06 238475MB
4 15 0 ATA ST3250310NS CC06 238475MB
1 16 0 ATA ST3250310NS CC06 238475MB
0 Virtual Drive(s) found on the host adapter.
0 Virtual Drive(s) handled by BIOS
Press <Ctrl><H> for WebBIOS or press <Ctrl><Y> for Preboot CLI _
```



```
Exhibit_4
192.168.10.45 - KVM Console
File View Macros Tools Help
KVM VM
Battery Status: Not present

PCI SLOT ID LUN VENDOR PRODUCT REVISION CAPACITY
-----
4 LSI LSI MegaRAID SAS 9260-4i 2.120.233-147 512MB
4 13 0 ATA ST3250310NS CC06 238475MB
4 14 0 ATA ST3250310NS CC06 238475MB
4 15 0 ATA ST3250310NS CC06 238475MB
1 16 0 ATA ST3250310NS CC06 238475MB
4 0 LSI Virtual Drive RAID5 475904MB

1 Virtual Drive(s) found on the host adapter.

1 Virtual Drive(s) handled by BIOS
Press <Ctrl><H> for WebBIOS or press <Ctrl><Y> for Preboot CLI
```

Hot Area:

Questions

1 Refer to Exhibit\_3. Given this configuration with a dedicated spare, what is the maximum number of disks that can simultaneously fail without losing data?

2

3  0

4  1

2

3

Correct Answer:

Questions

1 Refer to Exhibit\_3. Given this configuration with a dedicated spare, what is the maximum number of disks that can simultaneously fail without losing data?

2

3  0

4  1

2

3

Section: (none)

Explanation

Explanation/Reference:

QUESTION 49

Instructions ✕

- THIS TASK DOES NOT REQUIRE DEVICE CONFIGURATION.
- Before beginning the questions, carefully read the information in the Scenario tab and familiarize yourself with the network topology.
- To access the multiple-choice questions, click on the numbered boxes on the left of the top panel.
- There are four multiple-choice questions with this task. Be sure to answer all four questions before clicking the Next button.
- Use the tabs at the bottom of the question to navigate between the Topology and question-specific Exhibits. Exhibit\_1 maps to Question 1, and so on.

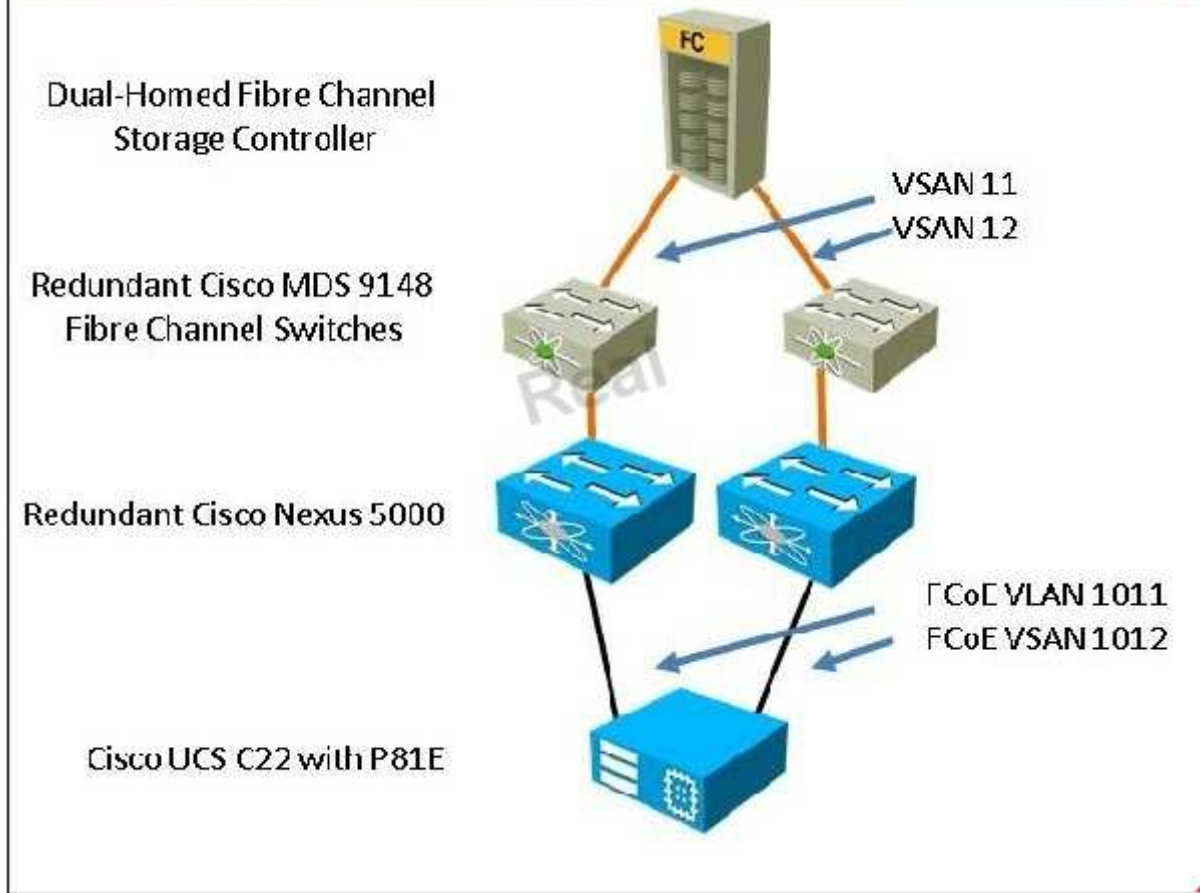
Real

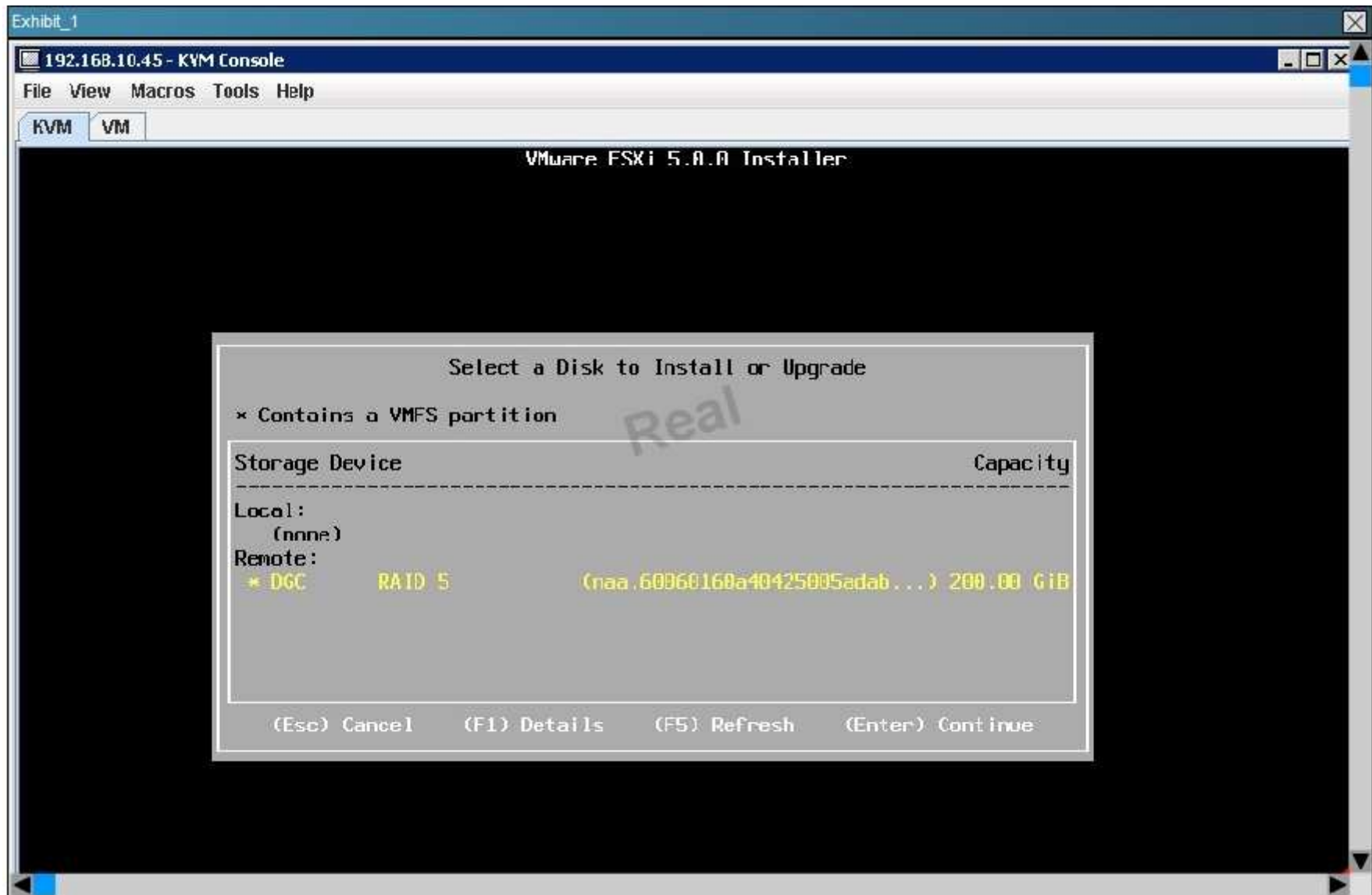
Scenario ✕

Your customer has purchased a Cisco UCS C22 M2 server equipped with an LSI MegaRAID 9260-4i, four SAS hard drives, and a Cisco UCS P81E VIC.

Because Fibre Channel storage is at a premium at this data center, the customer decides to boot VMware ESXi 5.0 from local storage and attach to the VMs on a VMFS LUN on a Fibre Channel storage controller with a large RAID array.

The customer is encountering issues connecting to local storage, and you are called on-site to get the server into production.

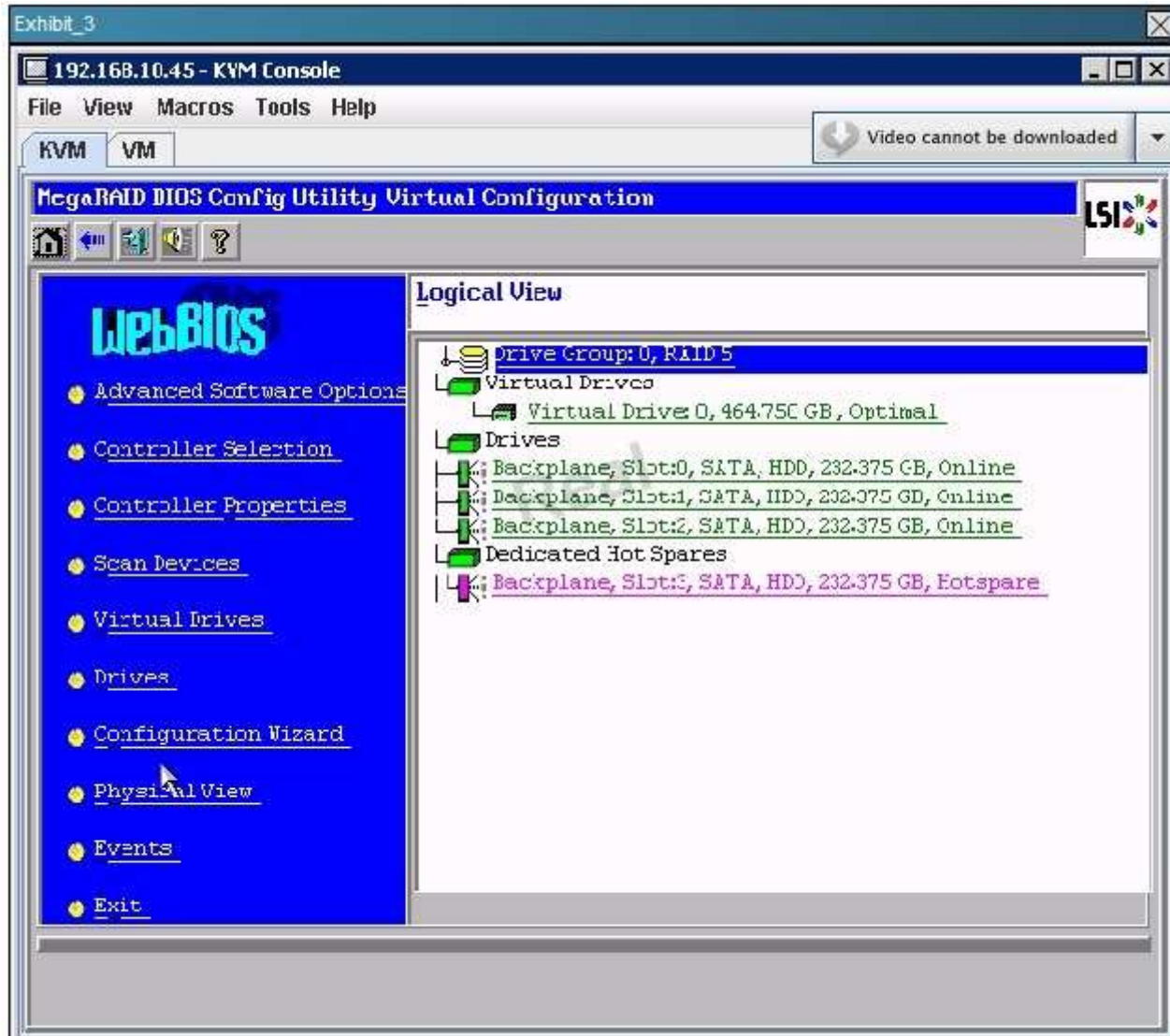






```
Exhibit_2
192.168.10.45 - KVM Console
File View Macros Tools Help
KVM VM
Battery Status: Not present

PCI SLOT ID LUN VENDOR PRODUCT REVISION CAPACITY
-----
4 LSI LSI MegaRAID SAS 9260-4i 2.120.233-147 512MB
4 13 0 ATA ST3250310NS CC06 238475MB
4 14 0 ATA ST3250310NS CC06 238475MB
4 15 0 ATA ST3250310NS CC06 238475MB
1 16 0 ATA ST3250310NS CC06 238475MB
0 Virtual Drive(s) found on the host adapter.
0 Virtual Drive(s) handled by BIOS
Press <Ctrl><H> for WebBIOS or press <Ctrl><Y> for Preboot CLI _
```



```
Exhibit_4
192.168.10.45 - KVM Console
File View Macros Tools Help
KVM VM
Battery Status: Not present

PCI SLOT ID LUN VENDOR PRODUCT REVISION CAPACITY
-----
4 LSI LSI MegaRAID SAS 9260-4i 2.120.233-147 512MB
4 13 0 ATA ST3250310NS CC06 238475MB
4 14 0 ATA ST3250310NS CC06 238475MB
4 15 0 ATA ST3250310NS CC06 238475MB
1 16 0 ATA ST3250310NS CC06 238475MB
4 0 LSI Virtual Drive RAID5 475904MB
1 Virtual Drive(s) found on the host adapter.

1 Virtual Drive(s) handled by BIOS
Press <Ctrl><H> for WebBIOS or press <Ctrl><Y> for Preboot CLI
```

Hot Area:

Questions

1 Refer to Exhibit\_4. Given the information on this message you see during POST, what

2 write cache policy would you recommend to your customer?

3  write-through

4  no write cache

write-back

write-forward

**Correct Answer:**

Questions

1 Refer to Exhibit\_4. Given the information on this message you see during POST, what

2 write cache policy would you recommend to your customer?

3  write-through

4  no write cache

write-back

write-forward

**Section: (none)**

**Explanation**

**Explanation/Reference:**

**QUESTION 50**

A customer is trying to boot an operating system that is installed on the eUSB on a Cisco UCS B- Series blade server; however, the boot fails. What is the cause of this failure?

- A. The local disk must be the first device in the boot order.
- B. eUSB is not a supported boot device.
- C. eUSB support is available only on the Cisco UCS C-Series rack server.
- D. eUSB is not the first device in the boot order for the server.

**Correct Answer: D**

**Section: (none)**

## Explanation

### Explanation/Reference:

Explanation:

### QUESTION 51

Which of these does not have an FSM associated with it?

- A. vCenter connection
- B. service profile
- C. server hardware
- D. service profile templates

**Correct Answer: D**

**Section: (none)**

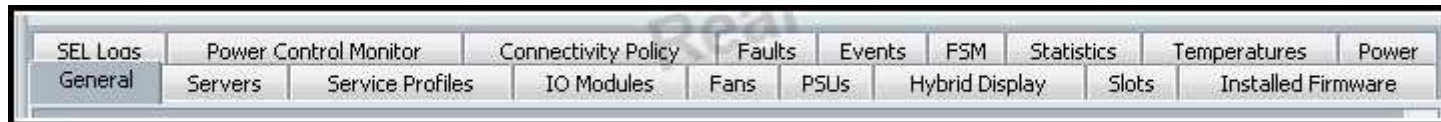
### Explanation

### Explanation/Reference:

answer is outclass.

### QUESTION 52

Refer to the exhibit.



Which tab would be the most useful for troubleshooting a blade discovery problem?

- A. Faults
- B. Events
- C. FSM
- D. Servers

**Correct Answer: C**

**Section: (none)**

### Explanation

**Explanation/Reference:**

Explanation:

**QUESTION 53**

RBAC is a method of restricting access for a particular user on which two of these? (Choose two.)

- A. roles
- B. realm
- C. locales
- D. RADIUS
- E. LDAP

**Correct Answer:** AC

**Section:** (none)

**Explanation**

**Explanation/Reference:**

proper answer.

**QUESTION 54**

Which two types of ports does end host mode switching have? (Choose two.)

- A. VSS
- B. border
- C. router
- D. server
- E. STP
- F. client

**Correct Answer:** BD

**Section:** (none)

**Explanation**

**Explanation/Reference:**

answer is specific.

**QUESTION 55**

In a Cisco UCS environment, what are the three power types in a power policy? (Choose three.)

- A. backup
- B. grid
- C. redund
- D. n-plus-1
- E. non-redund
- F. plus-1

**Correct Answer:** BDE

**Section:** (none)

**Explanation**

**Explanation/Reference:**

Explanation:

#### **QUESTION 56**

When a service profile is disassociated from a server, what happens to the identity and connectivity information for the server?

- A. It is cleared and set to the default that was setup initially by the first configuration.
- B. It is maintained and can be reused.
- C. It is reset to factory defaults.
- D. It uses master service profile parameters.
- E. It takes parameters of other servers in the service profile.

**Correct Answer:** C

**Section:** (none)

**Explanation**

**Explanation/Reference:**

Explanation:

#### **QUESTION 57**

At any given time, each server can be associated with how many service profiles?

- A. 1
- B. 2
- C. 5
- D. 10
- E. unlimited

**Correct Answer:** A

**Section:** (none)

**Explanation**

**Explanation/Reference:**

okay.

**QUESTION 58**

In new Cisco UCS release 2.0 installations, what are the default VLAN IDs?

- A. Ethernet VLAN default ID is 4048, FCOE default VLAN ID 4048
- B. Ethernet VLAN default ID is 1, FCOE default VLAN ID is 3968
- C. Ethernet VLAN default ID is 1, FCOE default VLAN ID is 2
- D. Ethernet VLAN default ID is 2, FCOE default VLAN ID is 4047
- E. Ethernet VLAN default ID is 1, FCOE default VLAN ID is 4048

**Correct Answer:** E

**Section:** (none)

**Explanation**

**Explanation/Reference:**

Explanation:

**QUESTION 59**

Which three are valid tech support bundles to collect in the local management shell? (Choose three.)

- A. UCSM
- B. UCSM-MGMT
- C. Port-Channel
- D. Adapter
- E. SAN
- F. FEX

**Correct Answer:** ABF

**Section:** (none)

**Explanation**

**Explanation/Reference:**



Explanation:

**QUESTION 60**

The Core File Exporter automatically exports cores to a remote server as they are generated. Which protocol does it use for this action?

- A. FTP
- B. SCP
- C. SFTP
- D. TFTP

**Correct Answer: D**

**Section: (none)**

**Explanation**

**Explanation/Reference:**

Explanation:

**QUESTION 61**

Which log file in Cisco UCS Manager contains information about which user took a specific action?

- A. user access log
- B. system change log
- C. audit log
- D. access control log

**Correct Answer: C**

**Section: (none)**

**Explanation**

**Explanation/Reference:**

answer is clear.

**QUESTION 62**

Which statement is true about system event logs?

- A. By default, they require manual clearing.
- B. They report operating system crashes and errors.
- C. They are also referred to as system error logs.

D. They can only be accessed from Cisco UCS Manager.

**Correct Answer:** A

**Section:** (none)

**Explanation**

**Explanation/Reference:**

Explanation:

**QUESTION 63**

Which piece of information does the FSM provide?



<http://www.gratisexam.com/>

- A. the current task and status
- B. a collection of blade statistics
- C. the last user to access the resource
- D. a list of faults currently suppressed by the Cisco UCS Manager

**Correct Answer:** A

**Section:** (none)

**Explanation**

**Explanation/Reference:**

Explanation:

**QUESTION 64**

If a server is not associated with a service profile, the activated firmware remains pending. Which two steps should you take? (Choose two.)

- A. Manually reboot the server.
- B. Reset the server to a new profile.
- C. Reset the unassociated server to activate the firmware.
- D. Reinitialize the firmware process with Cisco UCS Manager.

<http://www.gratisexam.com/>

- E. Download the firmware and start over.
- F. Shut down gracefully and start over.

**Correct Answer:** AC

**Section:** (none)

**Explanation**

**Explanation/Reference:**

most obvious answer.

#### **QUESTION 65**

After migrating a server that is configured with dynamic vNICs, Cisco UCS Manager assigns new dynamic vNICs to the server. If you had been monitoring traffic on an original dynamic vNIC, what must you do when the server comes back up?"

- A. Reassign the dynamic vNIC back to the old configuration.
- B. Nothing; Cisco UCS Manager will take over.
- C. Reassign the service profile back to the master one.
- D. Remove and reconfigure the dynamic vNIC.
- E. Reassign the monitoring source.

**Correct Answer:** E

**Section:** (none)

**Explanation**

**Explanation/Reference:**

Explanation:

#### **QUESTION 66**

Refer to the exhibit.

## Properties

Name: **server-equipment**

### Privileges

- Service Profile Storage Policy
- Operations
- Server Equipment
- Server Maintenance
- Server Policy
- Server Security
- Pod Config
- Pod Policy
- Pod Qos
- Pod Security
- Power Mgmt

Real

### Help

Description:

Using RBAC for security in a Cisco UCS environment, what is seen in the exhibit?

- A. custom role
- B. default role
- C. LDAP group map
- D. external service profile

**Correct Answer:** B

**Section:** (none)

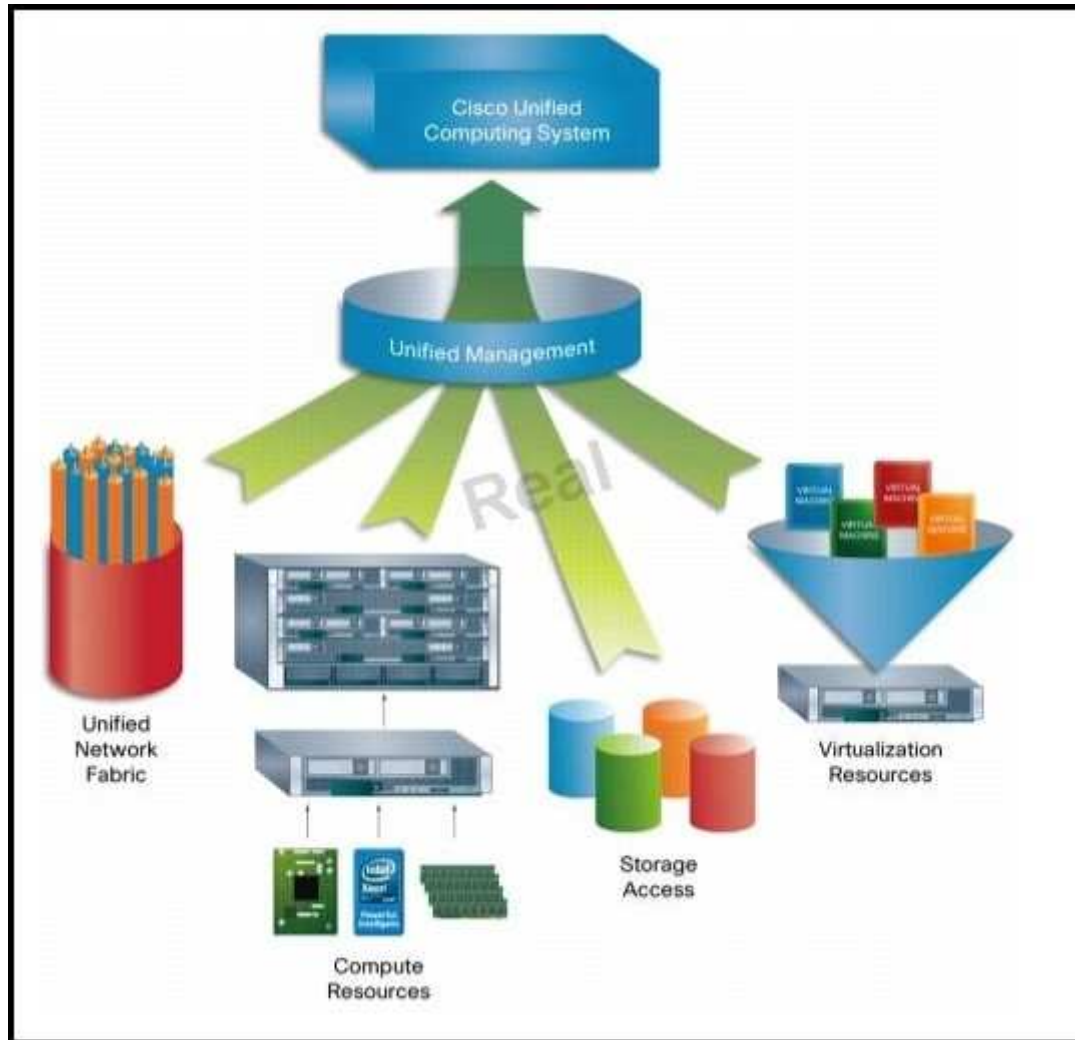
**Explanation**

**Explanation/Reference:**

Explanation:

**QUESTION 67**

Refer to the exhibit.



Real 12  
Cisco 642-035 Exam

Which of these is an extension of the virtual machine abstraction that is applied to physical servers?

A. service profile

- B. compute profile
- C. organization profile
- D. locale profile
- E. role profile

**Correct Answer:** A

**Section:** (none)

**Explanation**

**Explanation/Reference:**

Explanation:

#### **QUESTION 68**

A customer is configuring an upstream disjoint Layer 2 network in a Cisco UCS domain. So far they have configured the following:

Fabric Interconnects are in switching mode.

There is symmetrical configuration for high availability.

There are no overlapping VLANs.

Each vNIC is communicating with one disjoint Layer 2 network.

After validating the above, the customer is still having issues with network connectivity. What is the issue?

- A. Overlapping VLANs are allowed in a disjoint Layer 2 network.
- B. The vNIC configuration is incorrect and must communicate with two or more disjoint layer 2 networks.
- C. The fabric interconnect must be in end-host mode for a disjoint Layer 2 network.
- D. Asymmetrical configuration for high availability needs to be configured.

**Correct Answer:** C

**Section:** (none)

**Explanation**

**Explanation/Reference:**

Explanation:

#### **QUESTION 69**

A customer is configuring a network control policy in a Cisco UCS domain. The network control policy configures the network control settings for the Cisco UCS domain, including which three of these? (Choose three.)

- A. how the VIF behaves if no uplink port is available in end-host mode
- B. the action that the Cisco UCS Manager takes on the remote Ethernet interface, vEthernet interface, or vFibreChannel interface when the associated border port fails
- C. Layer 2 switching on the fabric interconnect
- D. whether MAC registration occurs on a per-vNIC basis or for all VLANs
- E. the end-host mode setting on the I/O module

**Correct Answer:** ABD

**Section:** (none)

**Explanation**

**Explanation/Reference:**

answer is fit.

#### **QUESTION 70**

A customer is troubleshooting QoS in a Cisco UCS domain due to high packet drops in the network. The customer has configured the vNIC and associated QoS policy, and changed the MTU from 1000 to 1200. Packet drops still exist. What is the cause of this issue?

- A. The MTU specified here must be greater than the MTU specified in the associated QoS system class. If this MTU value is less than the MTU value in the QoS system class, packets may be dropped during data transmission.
- B. The MTU specified here must be equal to or less than the MTU specified in the associated QoS system class. If this MTU value exceeds the MTU value in the QoS system class, packets may be dropped during data transmission.
- C. The MTU specified here must be less than the MTU specified in the associated QoS system policy. If this MTU value exceeds the MTU value in the QoS system policy, packets may be not be dropped during data transmission.
- D. The MTU must be optimized and should be changed to fc with the CLI command set mtu fc.

**Correct Answer:** B

**Section:** (none)

**Explanation**

**Explanation/Reference:**

Explanation:

#### **QUESTION 71**

A customer is configuring SAN pin groups in a Cisco UCS domain. The customer notices that pinning is not working and traffic from the vHBA is not passing over the Fibre Channel uplink port. Which of these must be done for pinning to work correctly?

- A. Include the SAN pin group in a vHBA policy and then include the vHBA policy in the service profile that is assigned to that server.



- B. Include the SAN policy in the Cisco UCS Manager to match with pin groups on the fabric interconnect.
- C. The customer must have Cisco UCS Manager version 2.0 or above.
- D. Fibre Channel switch mode needs to be configured first.

**Correct Answer:** A

**Section:** (none)

**Explanation**

**Explanation/Reference:**

Explanation:

#### **QUESTION 72**

A customer is configuring LAN pin groups in a Cisco UCS domain. The customer has two fabric interconnects and would like to associate the pin group with only one interconnect. Which statement about this configuration is true?

- A. In a system with two fabric interconnects, you can associate the pin group with only one fabric interconnect, and the other fabric interconnect will not be usable.
- B. In a system with two fabric interconnects, you can only associate the pin group with both fabric interconnects; you cannot associate the pin group with only one fabric interconnect.
- C. In a system with two fabric interconnects, you can associate the pin group with only one fabric interconnect or with both fabric interconnect. This is a supported configuration.
- D. This configuration is not supported in a Cisco UCS domain.

**Correct Answer:** C

**Section:** (none)

**Explanation**

**Explanation/Reference:**

answer is outclass

#### **QUESTION 73**

Looking at the Equipment > Chassis > Servers > Server X view from the Cisco UCS Manager GUI, which tab would you select to identify the fabric interconnect uplink associated with a given virtual circuit?

- A. Paths
- B. vNIC Paths
- C. Virtual Circuit Paths
- D. VIF Paths

**Correct Answer:** D

**Section: (none)**

**Explanation**

**Explanation/Reference:**

Explanation:

**QUESTION 74**

While attempting to boot a Cisco UCS server from SAN, you are unable to see the LUN. Which of these are causing the problem? (Choose three.)

- A. VHBA template
- B. RAID policy
- C. zoning
- D. LUN ID
- E. vACLs
- F. disjoint fabrics

**Correct Answer: ACD**

**Section: (none)**

**Explanation**

**Explanation/Reference:**

rightful.

**QUESTION 75**

A customer is configuring the dynamic vNIC connection policy in a Cisco UCS domain. Why is the dynamic vNIC policy required?

- A. It is only required if you are configuring VM-FEX.
- B. It is only required if you are configuring Adapter-FEX.
- C. It is mainly for the Cisco UCS Manager to communicate with the fabric interconnect.
- D. It is required for Cisco UCS instances that include servers with VIC adapters on which you have installed VMs and configured dynamic vNICs.

**Correct Answer: D**

**Section: (none)**

**Explanation**

**Explanation/Reference:**

correct answer.

**QUESTION 76**

What is the default number of dynamic vNICs that is specified by the Cisco UCS Manager when creating a dynamic vNIC connection policy?

- A. 54
- B. 128
- C. 256
- D. 257

**Correct Answer:** A

**Section:** (none)

**Explanation**

**Explanation/Reference:**

answer is valid.

#### **QUESTION 77**

When using the Cisco UCS Manager GUI to troubleshoot a suspected bad memory, which logs contain data that are related to the faulty DIMM?

- A. the System Event log and Faults log that are located under the Admin tab
- B. the Events log and Faults log that are located under the Admin tab
- C. the System Event log that is located under the Server tab in the Navigation panel and the Faults log that is located under the Admin tab
- D. the System Event log that is located under the Equipment tab and the Faults log that is located under the Admin tab

**Correct Answer:** D

**Section:** (none)

**Explanation**

**Explanation/Reference:**

reliable answer.

#### **QUESTION 78**

Which two Cisco Nexus 2000-Series Fabric Extenders support connections to both Cisco Nexus 5000 Series Switches and Cisco Nexus 7000 Series Switches? (Choose two.)



<http://www.gratisexam.com/>

- A. Cisco Nexus 2248TP
- B. Cisco Nexus 2248TP-E
- C. Cisco Nexus 2232PP
- D. Cisco Nexus 2232TM

**Correct Answer:** AC

**Section:** (none)

**Explanation**

**Explanation/Reference:**

Explanation:

**QUESTION 79**

UCS-A# scope eth-uplink

UCS-A /eth-uplink # scope fabric a

UCS-A /eth-uplink/fabric # scope interface 2 3

UCS-A /eth-uplink/fabric/interface # create mon-src Monitor23

UCS-A /eth-uplink/fabric/interface/mon-src\* # set direction receive

UCS-A /eth-uplink/fabric/interface/mon-src\* # commit-buffer

What does the command scope interface 2 3 in the above CLI command sequence do on a Cisco UCS blade server?

- A. enters the interface command mode for the specified uplink port
- B. enters the interface command mode for the specified Fabric A
- C. enters the interface command mode for the specified Fabric B

D. enters slot 3 port 2 specified uplink port

**Correct Answer:** A

**Section:** (none)

**Explanation**

**Explanation/Reference:**

answer is sophisticated.

#### **QUESTION 80**

During a password recovery of a Cisco UCS system in a cluster configuration, what happens to blade traffic?

- A. There is no interruption to traffic, as the fabrics go down one at a time.
- B. Traffic stops flowing until the process is complete.
- C. There is no interruption to traffic because both fabrics stay up the whole time.
- D. Traffic will continue to flow, but at a limited rate until the process is complete.

**Correct Answer:** B

**Section:** (none)

**Explanation**

**Explanation/Reference:**

Explanation:

#### **QUESTION 81**

A customer is troubleshooting QoS in a Cisco UCS domain due to high packet drops in the network. The customer has configured the vNIC and associated QoS policy, and changed the MTU from 1000 to 1200. Packet drops still exist. What is the cause of this issue?

- A. The MTU specified here must be greater than the MTU specified in the associated QoS system class. If this MTU value is less than the MTU value in the QoS system class, packets may be dropped during data transmission.
- B. The MTU specified here must be equal to or less than the MTU specified in the associated QoS system class. If this MTU value exceeds the MTU value in the QoS system class, packets may be dropped during data transmission.
- C. The MTU specified here must be less than the MTU specified in the associated QoS system policy. If this MTU value exceeds the MTU value in the QoS system policy, packets may be not be dropped during data transmission.
- D. The MTU must be optimized and should be changed to fc with the CLI command set mtu fc.

**Correct Answer:** B

**Section:** (none)

**Explanation**

**Explanation/Reference:**

Explanation:

**QUESTION 82**

While attempting to boot a Cisco UCS server from SAN, you are unable to see the LUN. Which of these are causing the problem? (Choose three.)

- A. VHBA template
- B. RAID policy
- C. zoning
- D. LUN ID
- E. vACLs
- F. disjoint fabrics

**Correct Answer:** ACD

**Section:** (none)

**Explanation**

**Explanation/Reference:**

rightful.

**QUESTION 83**

What is the recommended procedure to update Cisco UCS C-Series rack-mount server firmware?

- A. Launch the Cisco UCS Firmware Update Utility from virtual media.
- B. Launch the Cisco UCS Host Update Utility from virtual media.
- C. Launch the Cisco UCS Server Update Utility from virtual media.
- D. Launch the Cisco UCS CIMC Update Utility from virtual media.

**Correct Answer:** B

**Section:** (none)

**Explanation**

**Explanation/Reference:**

answer is to the point.

**QUESTION 84**

A Cisco UCS chassis has two ports on I/O Module 1 connected to Fabric Interconnect A, and two ports on I/O Module 2 connected to Fabric Interconnect B. The I/O modules are connected to ports 1 and 2 on their respective fabric interconnects, and end host mode is configured. After a link failure occurs on port 1 of I/O

Module 1, what happens to the traffic that was pinned to that link?

- A. The traffic fails until the link issue is resolved.
- B. The traffic is repinned to I/O Module 2 link 1, which is connected to Fabric Interconnect B.
- C. The traffic is repinned to the remaining link between I/O Module 1 and Fabric Interconnect A.
- D. The traffic is repinned automatically to Fabric Interconnect B.

**Correct Answer:** C

**Section:** (none)

**Explanation**

**Explanation/Reference:**

Explanation:

**QUESTION 85**

Which log file in Cisco UCS Manager contains information about which user took a specific action?

- A. user access log
- B. system change log
- C. audit log
- D. access control log

**Correct Answer:** C

**Section:** (none)

**Explanation**

**Explanation/Reference:**

answer is clear.

**QUESTION 86**

During the installation of Windows 2008 64-bit operating system on a Cisco UCS server, the RAID controller is not found. What is the cause of the problem?



<http://www.gratisexam.com/>

- A. The Cisco IMC firmware needs to be updated.
- B. The LSI option ROM needs to be configured by pressing Ctrl-H during post.
- C. The LSI drivers are not bundled and need to be loaded by clicking the Load Driver option to point to the correct drivers.
- D. Windows 2008 64-bit operating system is not supported on Cisco UCS servers.

**Correct Answer:** C

**Section:** (none)

**Explanation**

**Explanation/Reference:**

Explanation:

#### **QUESTION 87**

You are troubleshooting an FCoE boot issue on a Cisco UCS C220 M3 server with a VIC 1225 CNA. Which two pieces of information can you directly infer from the output of the show zone active command below? (Choose two.)

```
zone name Server_1-to-Storage vsan 11
```

```
pwwn 50:06:01:60:3b:a0:08:9f [Storage]
```

```
* fcid 0x3b000b [pwwn 20:00:00:25:b5:04:0a:02] [C22_Server]
```

- A. The storage controller is not logged into the fabric.
- B. The server is not logged into the fabric.
- C. Only the storage controller is logged into the fabric.
- D. Only the server is logged into the fabric.
- E. The initiator and target cannot communicate because they are on the wrong VSAN.
- F. The WWPN of the storage controller is mistyped.
- G. The initiator and target cannot communicate because the zone name does not match the server name (C22\_Server).

**Correct Answer:** AD

**Section:** (none)

**Explanation**

**Explanation/Reference:**

superb answer.

#### **QUESTION 88**



A customer calls in a trouble ticket complaining of unacceptable read I/O latency on a Cisco UCS C210 M2 server with an LSI MegaRAID 9260-8i with an 8-disk RAID-10 virtual disk. As you validate the RAID controller configuration, which of these configured items impacts read performance at the controller level?

- A. all disks are 146GB 6 Gb SAS 15K RPM SFF
- B. read ahead cache is enabled
- C. BGI rate = 0
- D. strip size = 256k
- E. no hot spare

**Correct Answer:** D

**Section:** (none)

**Explanation**

**Explanation/Reference:**

Explanation:

#### **QUESTION 89**

What is the maximum number of boot targets for an FCoE vHBA on a Cisco UCS C-Series server?

- A. 1
- B. 2
- C. 3
- D. 4

**Correct Answer:** D

**Section:** (none)

**Explanation**

**Explanation/Reference:**

Explanation:

#### **QUESTION 90**

Which command sequence in the Cisco UCS C-Series rack server CLI sends tech support data to a TFTP server?

- A. ucs-c250 / # scope cimc  
ucs-c250 /cimc # scope tech-support  
ucs-c250 /cimc/tech-support # set path default.tar.gz ucs-c250 /cimc/tech-support \*# set tftp-ip 192.168.70.45 ucs-c250 /cimc/tech-support \*# commit
- B. ucs-c250 / # scope system  
ucs-c250 /system # scope tech-support

- ```
ucs-c250 /system/tech-support # set path default.tar.gz ucs-c250 /system/tech-support *# set tftp-ip 192.168.70.45 ucs-c250 /system/tech-support *# commit
```
- C. 

```
ucs-c250 / # scope support
ucs-c250 /support # scope tech-support
ucs-c250 /support/tech-support # set path default.tar.gz ucs-c250 /support/tech-support *# set tftp-ip 192.168.70.45 ucs-c250 /support/tech-support *# commit
```
- D. 

```
ucs-c250 / # scope fault
ucs-c250 /fault # scope tech-support
ucs-c250 /fault/tech-support # set path default.tar.gz ucs-c250 /fault/tech-support *# set tftp-ip 192.168.70.45 ucs-c250 /fault/tech-support *# commit
```

**Correct Answer:** A

**Section:** (none)

**Explanation**

**Explanation/Reference:**

real answer.

#### **QUESTION 91**

Which three Cisco UCS server components can be upgraded via a host firmware package? (Choose three.)

- A. BIOS
- B. Cisco UCS Manager
- C. I/O module
- D. Cisco IMC
- E. fabric interconnect
- F. adapter
- G. board controller

**Correct Answer:** AFG

**Section:** (none)

**Explanation**

**Explanation/Reference:**

Explanation:

#### **QUESTION 92**

Which three Cisco UCS server components can be upgraded via a host firmware package? (Choose three.)

- A. BIOS
- B. Cisco UCS Manager

- C. I/O module
- D. Cisco IMC
- E. fabric interconnect
- F. adapter
- G. board controller

**Correct Answer:** AFG

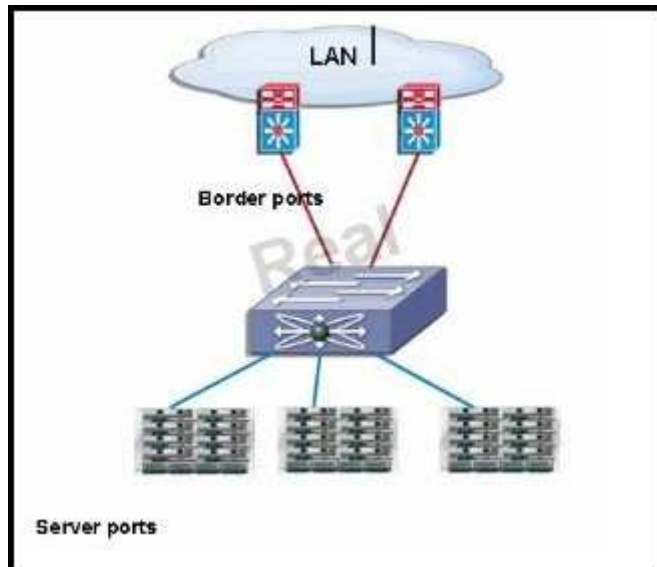
**Section:** (none)

**Explanation**

**Explanation/Reference:**  
appropriate answer.

**QUESTION 93**

Refer to the exhibit.



In a Cisco UCS environment, which switch mode does the exhibit portray?

- A. end host mode

- B. switching mode
- C. access mode
- D. core mode

**Correct Answer:** A

**Section:** (none)

**Explanation**

**Explanation/Reference:**

straight answer.

#### **QUESTION 94**

While updating firmware in a Cisco UCS environment, what will the Cisco UCS Manager do?

- A. show you all versions available on Cisco.com
- B. show you all versions downloaded to the Cisco UCS Manager
- C. show you only versions that are supported in your environment
- D. show you only versions that you selected to show
- E. show you old and new versions from your download

**Correct Answer:** C

**Section:** (none)

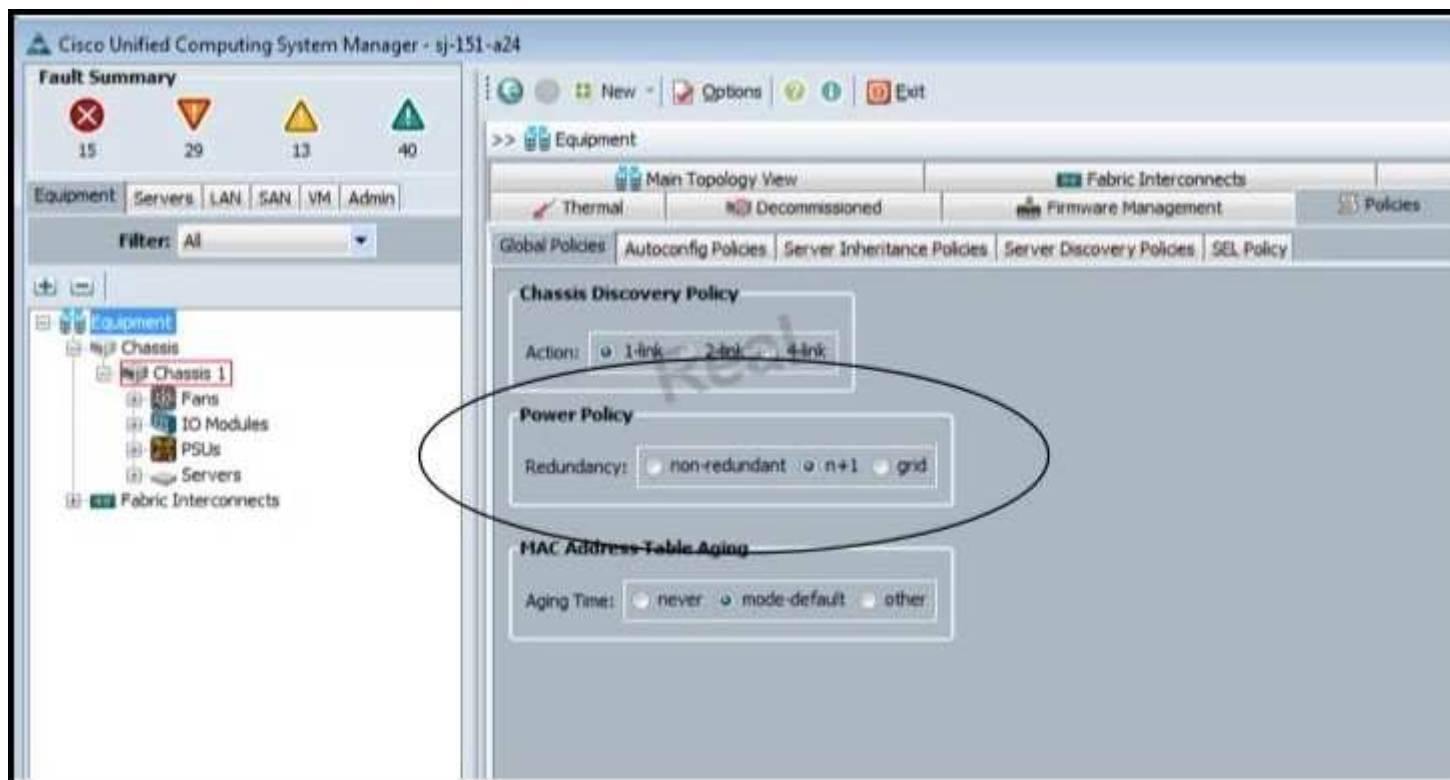
**Explanation**

**Explanation/Reference:**

answer is Best,

#### **QUESTION 95**

Refer to the exhibit.



Which type of power policy is shown when referring to a Cisco UCS environment?

- A. chassis
- B. blade server
- C. fabric interconnect
- D. global
- E. switch

**Correct Answer: D**

**Section: (none)**

**Explanation**

**Explanation/Reference:**

obvious answer.

### QUESTION 96

Instructions

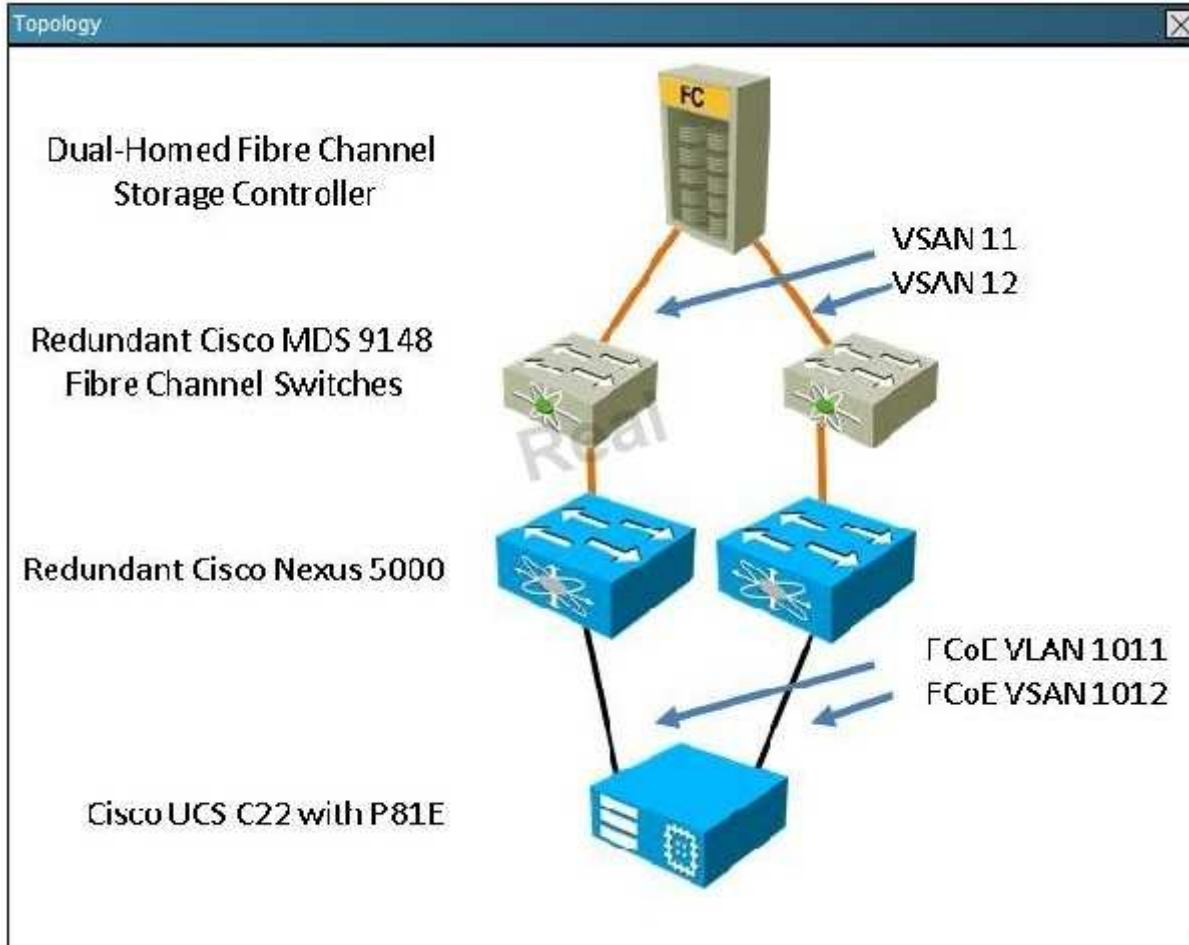
- **THIS TASK DOES NOT REQUIRE DEVICE CONFIGURATION.**
- **Before beginning the questions, carefully read the information in the Scenario tab and familiarize yourself with the network topology.**
- To access the multiple-choice questions, click on the numbered boxes on the left of the top panel.
- There are **four** multiple-choice questions with this task. Be sure to answer all four questions before clicking the Next button.
- Use the tabs at the bottom of the question to navigate between the Topology and question-specific Exhibits. Exhibit\_1 maps to Question 1, et cetera.

Scenario

You have received a trouble ticket from a customer with multiple FCoE issues deploying a Cisco UCS C22 M2 server. The server includes a Cisco UCS P81E VIC that has redundant connections to Cisco Nexus 5548 switches.

When the customer loads the installer for VMware ESXi 5.0, it is unable to connect to its boot LUN over Fabric A or Fabric B. To begin, you will concentrate your efforts on achieving connectivity on Fabric A.

The customer is a government agency with an information security policy prohibiting remote access into its network. It has provided a topology, command output from the Nexus 5548, and screenshots from the Cisco Integrated Management Controller of symptoms for you to troubleshoot.



Exhibit\_1

192.168.10.45 - KVM Console

File View Macros Tools Help

KVM VM

```
Initializing Intel(R) Boot Agent GE v1.3.35
PXE 2.1 Build 087 (WfM 2.0)

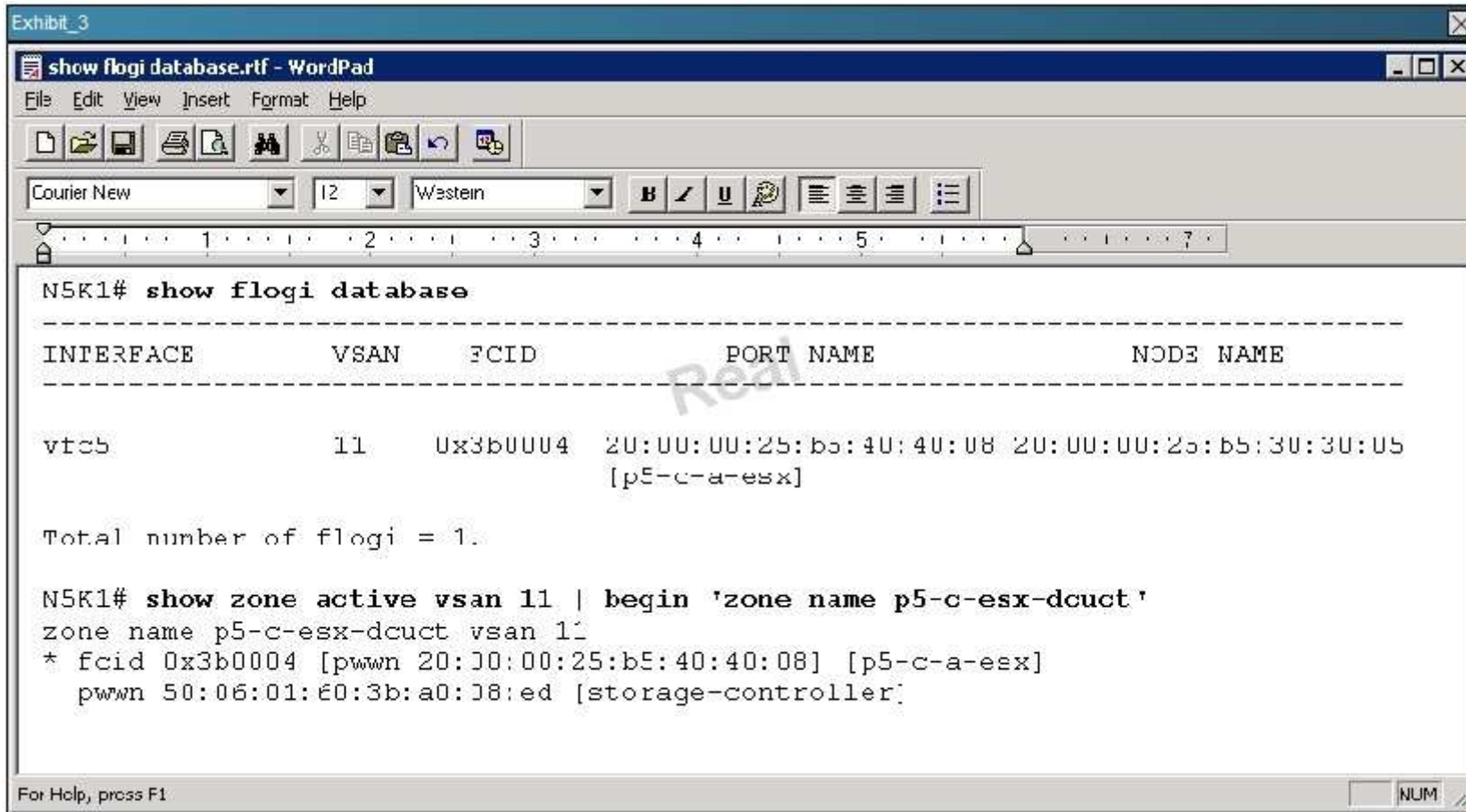
Cisco VIC FC, Boot Driver Version 2.0(2i)
(C) 2010 Cisco Systems, Inc.

Cisco VIC FC, Boot Driver Version 2.0(2i)
(C) 2010 Cisco Systems, Inc.

LSI MegaRAID SAS-MFI BIOS
Version 3.24.00 (Build October 26, 2011)
Copyright(c) 2011 LSI Corporation
HA -0 (Bus 18 Dev 0) LSI MegaRAID SAS 9260-4i
FW package: 12.12.0-0087
```







```
N5K1# show interface fc2/1
fc2/1 is down (Isolation due to zone merge failure)

N5K1# configure
Enter configuration commands, one per line.  End with CNIL/Z.
N5K1(config)# interface fc2/1
N5K1(config-if)# shutdown
N5K1(config-if)# no shutdown
N5K1(config-if)#

2012 Sep 28 14:43:04 N5K1 %$ VDC-1 %$ %ZONE-2-ZS_MERGE_FULL_DATABASE_MISMATCH: %
$VSAN 11%% Zone merge full database mismatch on interface fc2/1
2012 Sep 28 14:43:04 N5K1 %$ VDC-1 %$ %ZONE-2-ZS_MERGE_FAILED: %%VSAN 11%% Zone
merge failure, isolating interface fc2/1 reason: Member mismatch:[reason:0]
```

Hot Area:

Questions

1 Review the screenshot that the customer emailed to you in the tab **Exhibit\_1**.

2

3 You are gathering information to determine the causes of the inability to attach to the boot LUN over FCoE. During POST, two messages appear about the Cisco VIC FC, Boot Driver.

4

Which item is true regarding these messages? (Choose 1)

- They indicate that the Fibre Channel boot driver has failed during POST.
- They indicate that the Fibre Channel Boot Driver has logged into the Fabric A and Fabric B switches.
- They indicate that the Fibre Channel Boot Driver has loaded and there is an entry in the FCNS databases of the switches for Fabric A and Fabric B .
- They indicate that the Fibre Channel Boot Driver has loaded and failed to reach the storage controller on either Fabric A and Fabric B switches.

Correct Answer:

Questions

1 Review the screenshot that the customer emailed to you in the tab **Exhibit\_1**.

2

3 You are gathering information to determine the causes of the inability to attach to the boot LUN over FCoE. During POST, two messages appear about the Cisco VIC FC, Boot Driver.

4

Which item is true regarding these messages? (Choose 1)

- They indicate that the Fibre Channel boot driver has failed during POST.
- They indicate that the Fibre Channel Boot Driver has logged into the Fabric A and Fabric B switches.
- They indicate that the Fibre Channel Boot Driver has loaded and there is an entry in the FCNS databases of the switches for Fabric A and Fabric B .
- They indicate that the Fibre Channel Boot Driver has loaded and failed to reach the storage controller on either Fabric A and Fabric B switches.

Section: (none)  
Explanation

Explanation/Reference:



<http://www.gratisexam.com/>